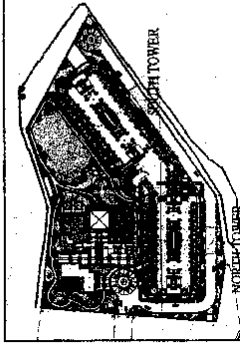
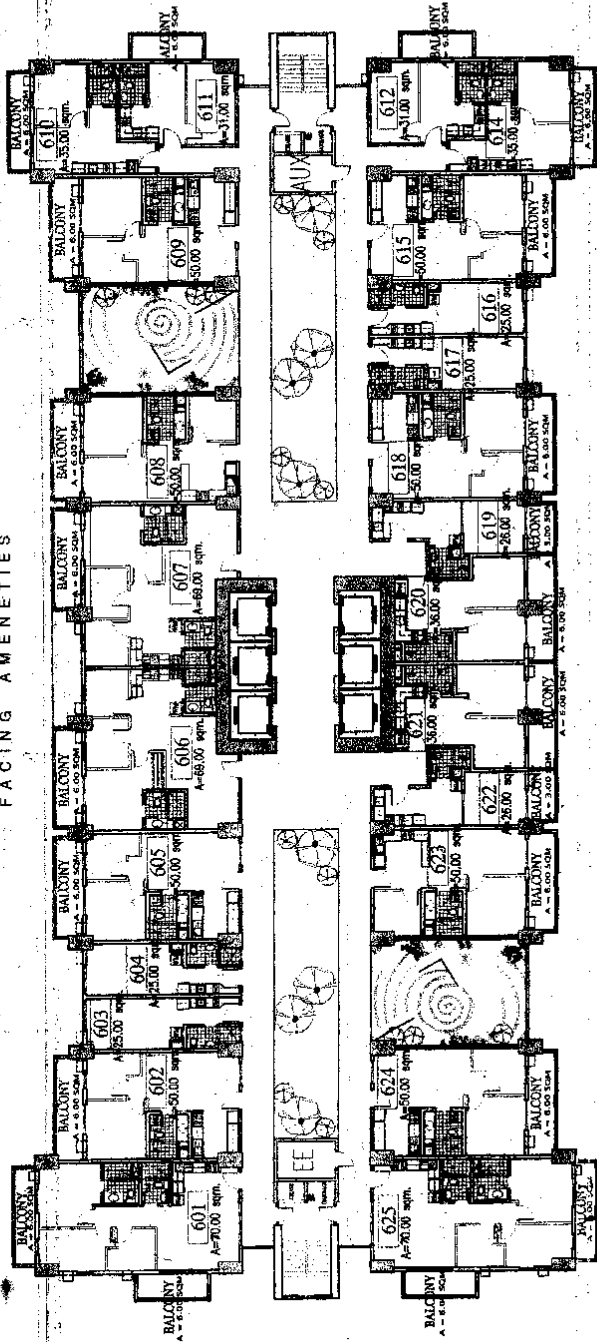


FACING AMENITIES

FACING DRIVEWAY

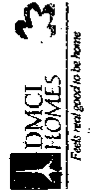
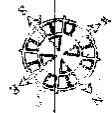


NO. DATE	REVISIONS	RMS	GSA	EGC
1	11-27-11	Issued for construction		
2	1-17-12	Change in layout area		



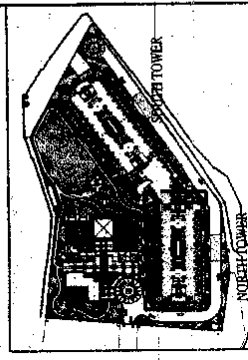
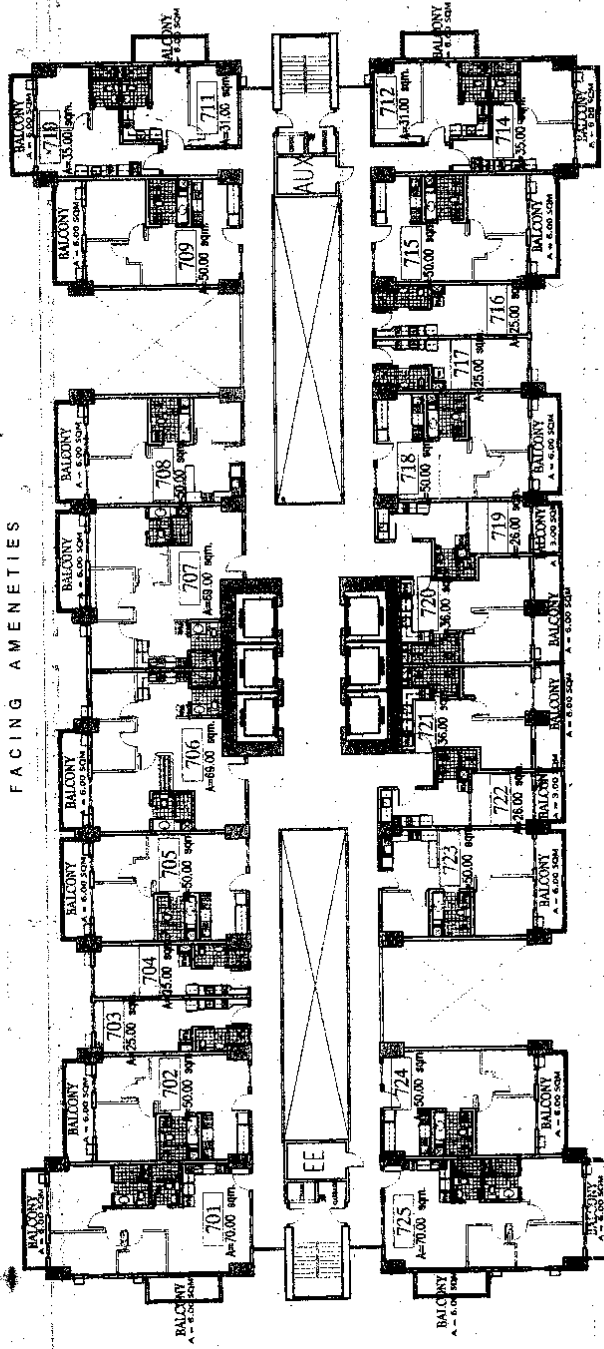
**ZINNIA TOWERS**  
**NORTH TOWER**  
**6th FLOOR PLAN**  
 5 January 2012

NOTE:  
 LAY-OUT IS FOR  
 AVAILABILITY PURPOSES ONLY.  
 DIMENSIONS AND FINISHES, PLEASE  
 REFER TO INDIVIDUAL UNIT  
 LAY-OUTS



FACING AMENITIES

FACING DRIVEWAY



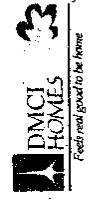
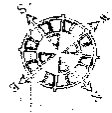
NO. DATE	REVISIONS	RMS	GS	EG
11-29-11	Issued for construction			
1-2-12	Revised on balcony area			

ZINNIA TOWERS

NORTH TOWER  
7th FLOOR PLAN

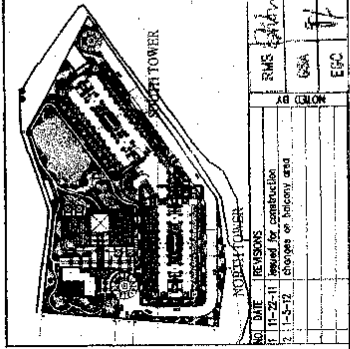
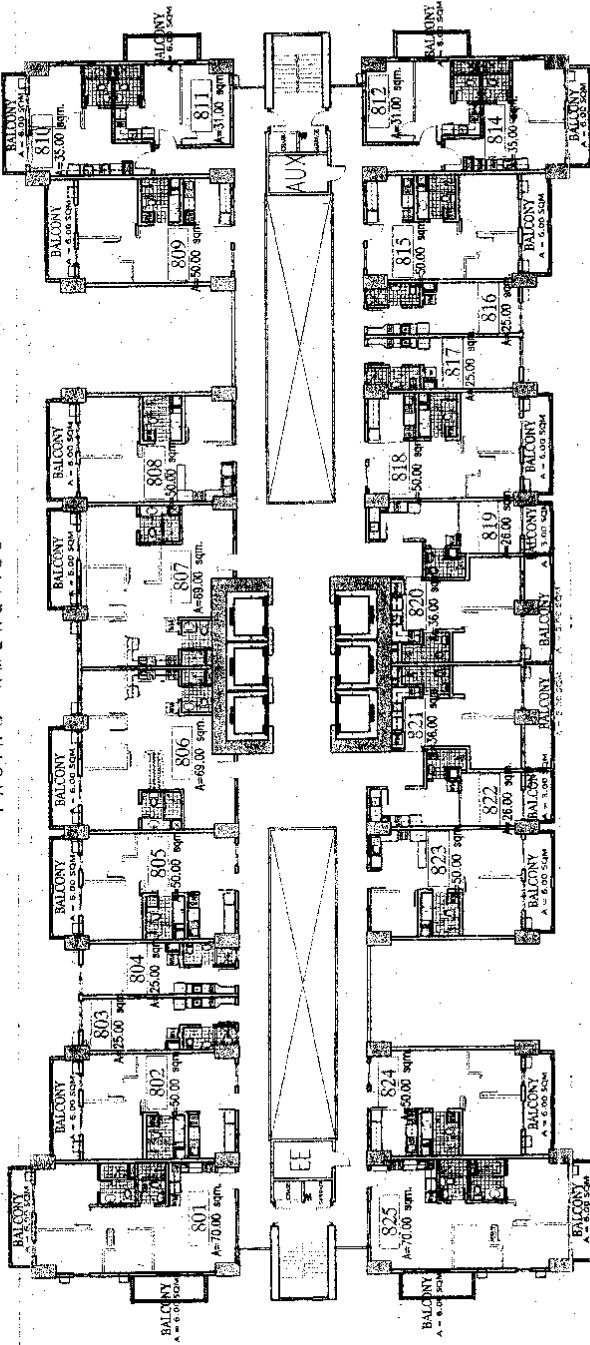
5 January 2012

NOTE: LAY-OUT IS FOR AVAILABLE PURPOSES ONLY. FOR ENLARGED PLANS, PLEASE REFER TO INDIVIDUAL UNIT LAY-OUTS

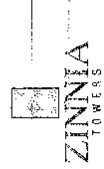


FACING AMENITIES

FACING DRIVEWAY

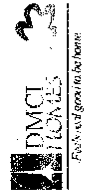


NO.	BY	DATE	REVISIONS
1		11-22-11	Issued for construction
2		1-14-12	Changes on balcony and
3			
4			
5			
6			
7			
8			
9			
10			
11			
12			
13			
14			
15			
16			
17			
18			
19			
20			
21			
22			
23			
24			
25			
26			
27			
28			
29			
30			
31			
32			
33			
34			
35			
36			
37			
38			
39			
40			
41			
42			
43			
44			
45			
46			
47			
48			
49			
50			
51			
52			
53			
54			
55			
56			
57			
58			
59			
60			
61			
62			
63			
64			
65			
66			
67			
68			
69			
70			
71			
72			
73			
74			
75			
76			
77			
78			
79			
80			
81			
82			
83			
84			
85			
86			
87			
88			
89			
90			
91			
92			
93			
94			
95			
96			
97			
98			
99			
100			

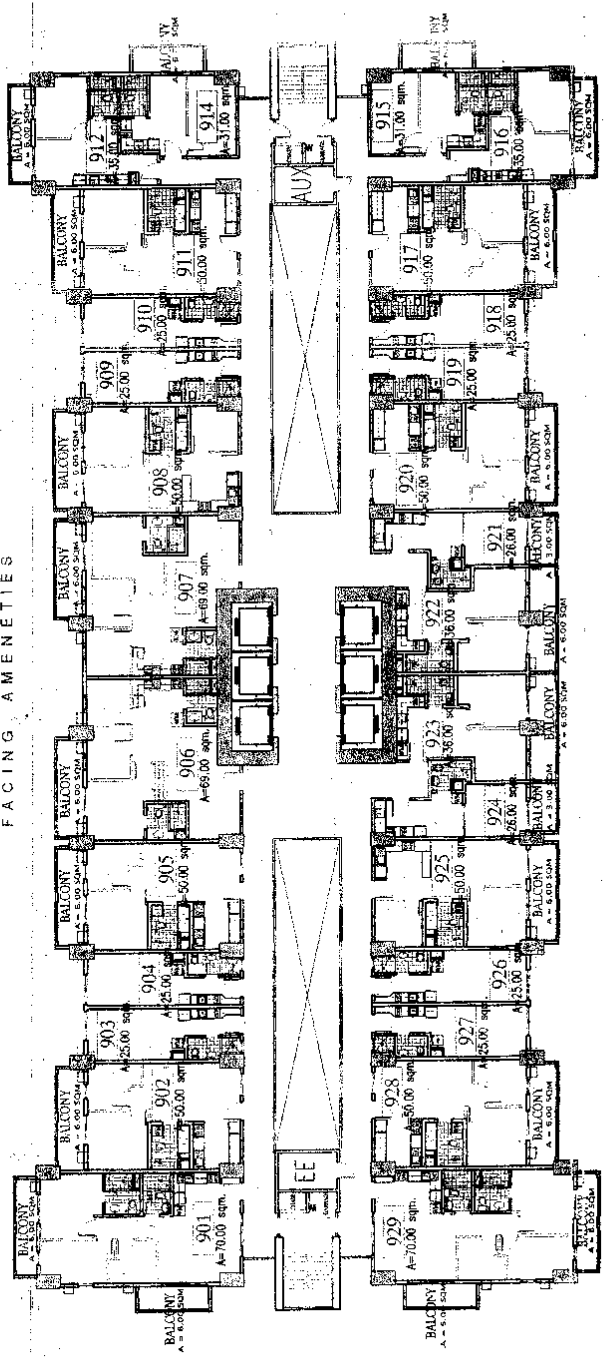


**NORTH TOWER**  
**8th FLOOR PLAN**  
 5 January 2012

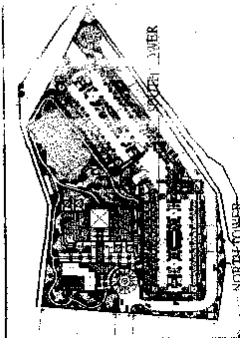
NOTE:  
 LAY-OUT IS FOR  
 AVAILABILITY PURPOSES ONLY.  
 FOR ENLARGED PLANS, PLEASE  
 REFER TO INDIVIDUAL UNIT  
 LAY-OUTS



FACING AMENITIES



FACING DRIVEWAY



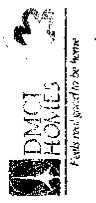
NO. LINE	REVISIONS	RMS	CSA	ECG
1	Issued for construction	1/11/12	1/11/12	1/11/12
2	Issued for construction	1/11/12	1/11/12	1/11/12
3	Issued for construction	1/11/12	1/11/12	1/11/12



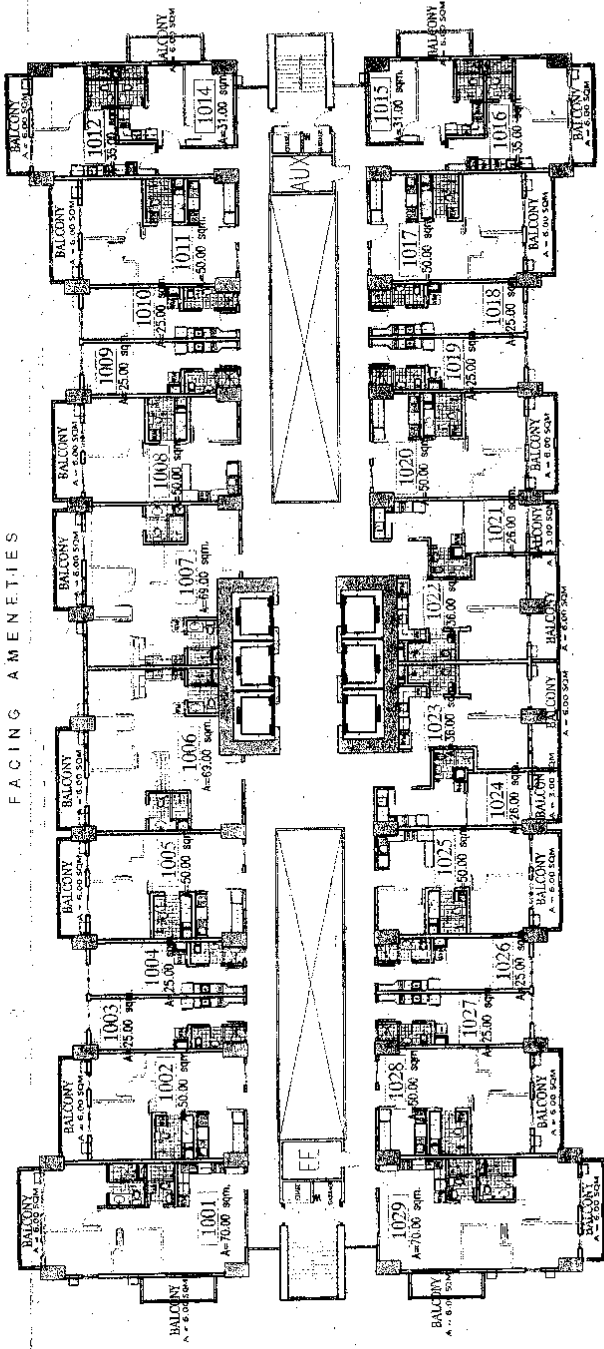
**NORTH TOWER**  
**9th FLOOR PLAN**

5 January 2012

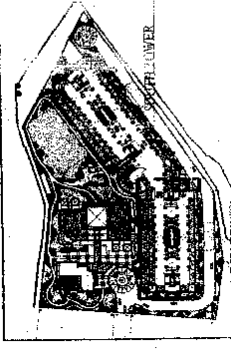
NOTE:  
LAY-OUT IS FOR  
GENERAL REFERENCE ONLY.  
FOR ENLARGED DETAILS PLEASE  
REFER TO INDIVIDUAL UNIT  
LAY-OUTS



FACING AMENITIES



FACING DRIVEWAY



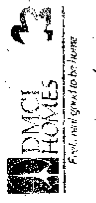
201 DATE	REVISIONS	RMS	SW/A
11-22-11	Issued for construction	GSA	11
1-5-12	changes on balcony area	EGC	11



**NORTH TOWER  
10th FLOOR PLAN**

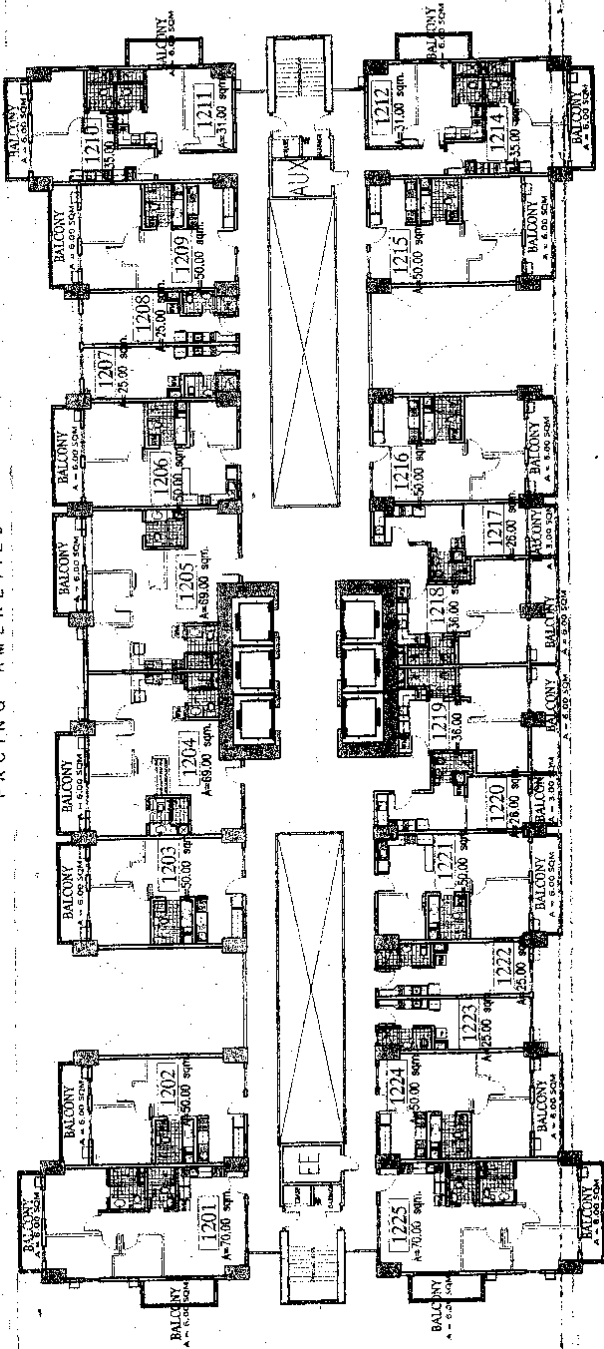
5 January 2012

NOTE:  
THIS UNIT IS FOR  
APPROXIMATE PURPOSES ONLY.  
FOR ENLARGED PLANS PLEASE  
REFER TO INDIVIDUAL UNIT  
LAY-OUTS

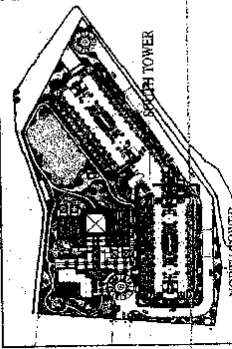




FACING AMENITIES



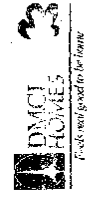
FACING DRIVEWAY

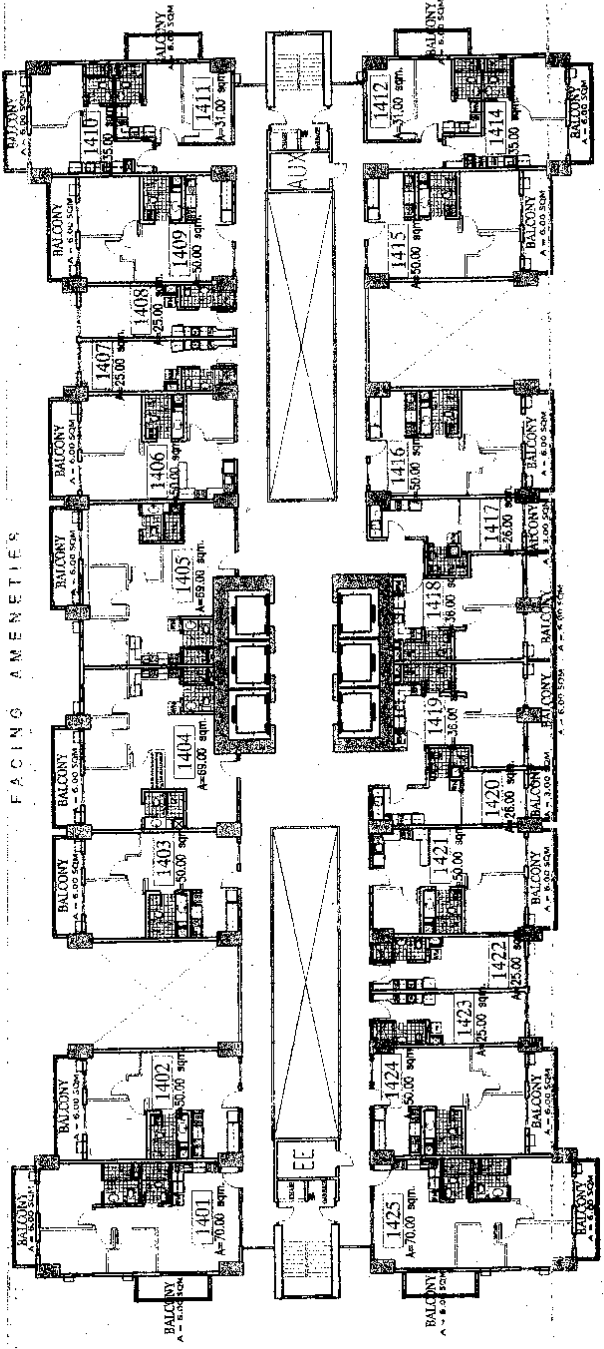


RMS	2/26/12
GSA	1/1
EGC	1/1
DATE REVISIONS	
1	11-21-11 Issued for construction
2	1-5-12 Change on balcony area

**ZINNIA**  
TOWERS  
**NORTH TOWER**  
**12th FLOOR PLAN**  
5 January 2012

NOTE:  
LAY-OUT IS FOR  
AVAILABILITY PURPOSES ONLY.  
FOR ENLARGED PLANS, PLEASE  
CONTACT AN INDIVIDUAL UNIT  
LAY-OUTS





FACING AMENITIES

FACING DRIVEWAY

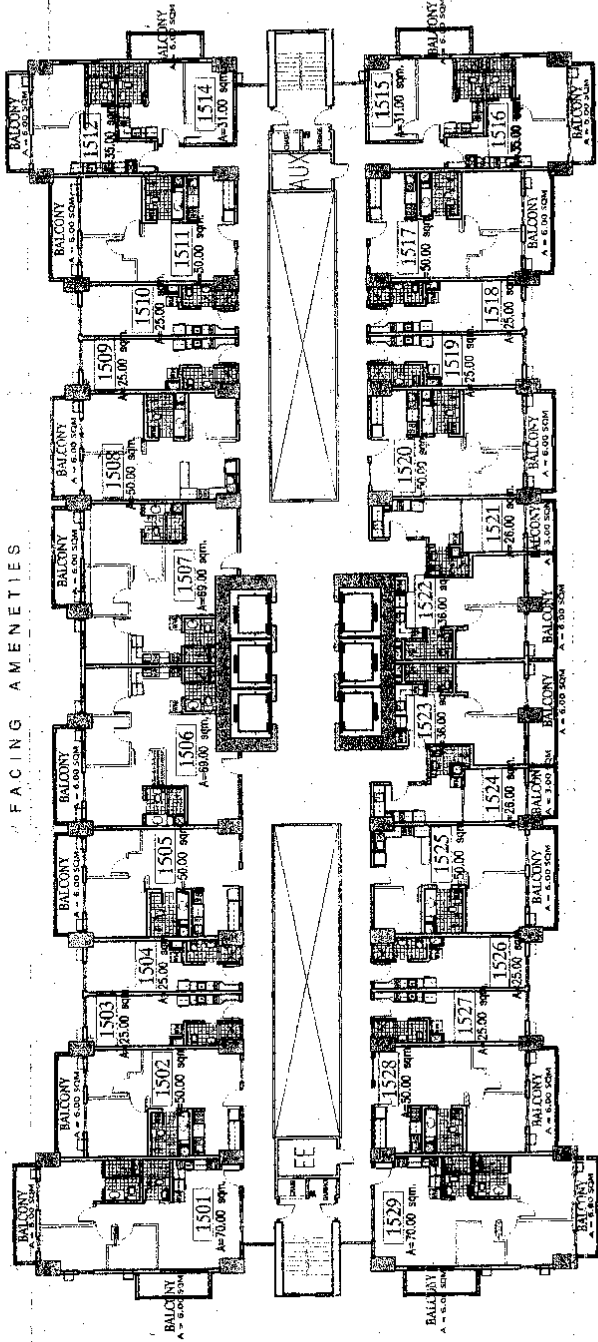
ZINNIA TOWERS  
**NORTH TOWER**  
**14th FLOOR PLAN**  
 5 January 2012

NOTE:  
 LAY-OUT IS FOR  
 AVAILABILITY PURPOSES ONLY.  
 FOR ENLARGED PLANS, PLEASE  
 CONTACT THE SALES OFFICE.  
 LAY-OUTS

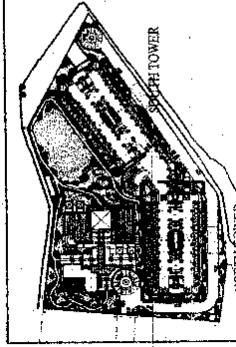


DATE	REVISIONS	RMS	CSA	ECC
1/4/12	1. 14th FLOOR PLAN			

FACING AMENITIES



FACING DRIVEWAY



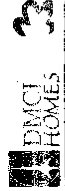
NO. DATE	REVISIONS	RMS	USA	EGC
1	11-22-11	AS	RELO	
2	1-15-12			
3	1-15-12			
4	1-15-12			
5	1-15-12			



**ZINNIA TOWERS**  
**NORTH TOWER**  
**15th FLOOR PLAN**

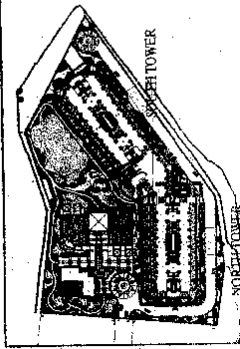
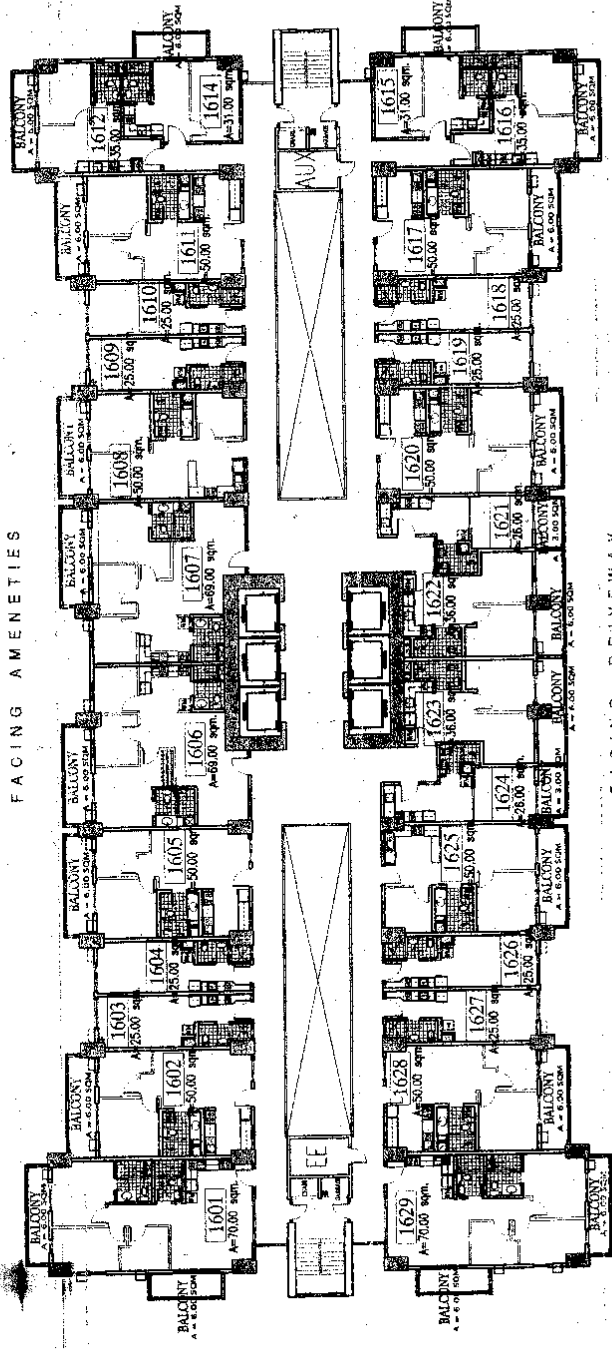
5 January 2012

NOTE:  
 LAY-OUT IS FOR  
 AVAILABILITY PURPOSES ONLY.  
 REFER ENLARGED PLANS, PLEASE  
 REFER TO INDIVIDUAL UNIT  
 LAY-OUTS



FACING AMENITIES

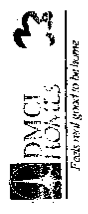
FACING DRIVEWAY



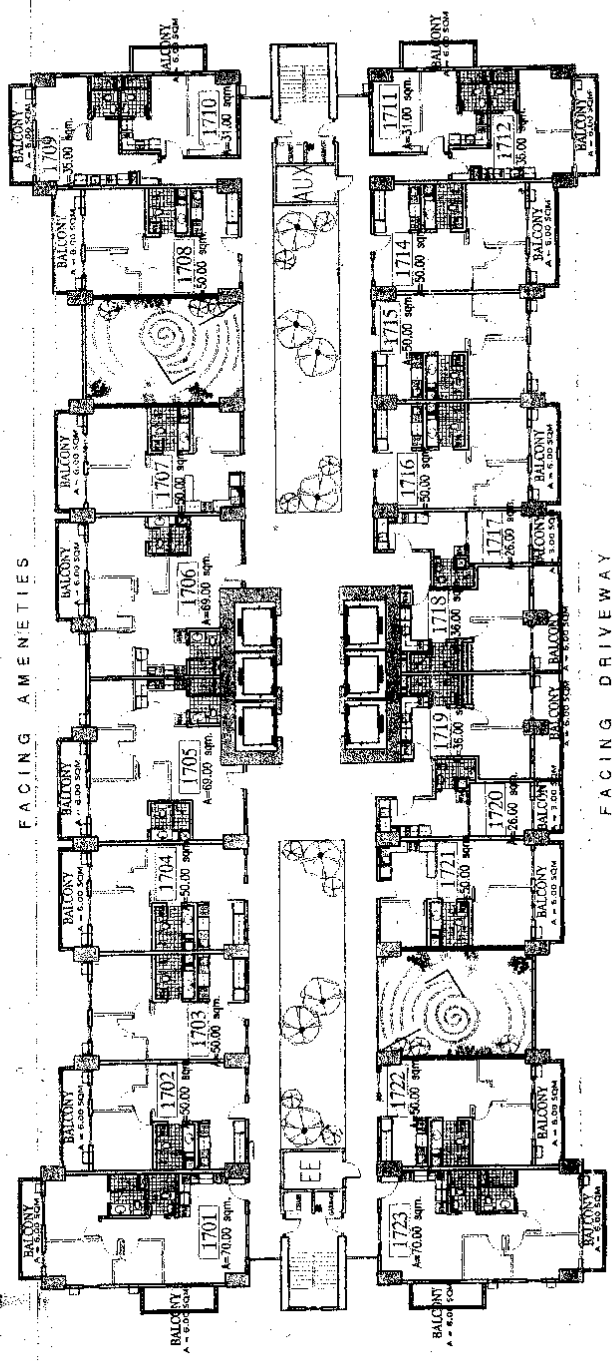
DATE	1/5/12	BY	EGG
REVISION	1	DESCRIPTION	REVISION
REVISION	2	CHANGE IN UNIT NO.	EGG
REVISION	3	CHANGE IN UNIT NO.	EGG

**ZINNIA TOWERS**  
**NORTH TOWER**  
**16th FLOOR PLAN**  
 5 January 2012

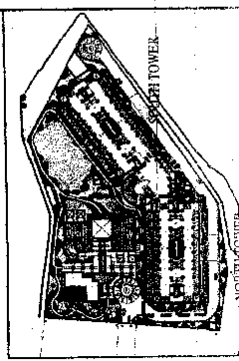
NOTE:  
 LAY-OUT IS FOR  
 AVAILABILITY PURPOSES ONLY.  
 FOR ENLARGED PLANS, PLEASE  
 REFER TO INDIVIDUAL UNIT  
 LAY-OUTS



FACING AMENITIES



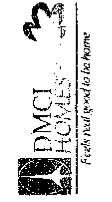
FACING DRIVEWAY

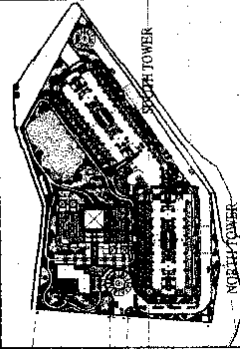
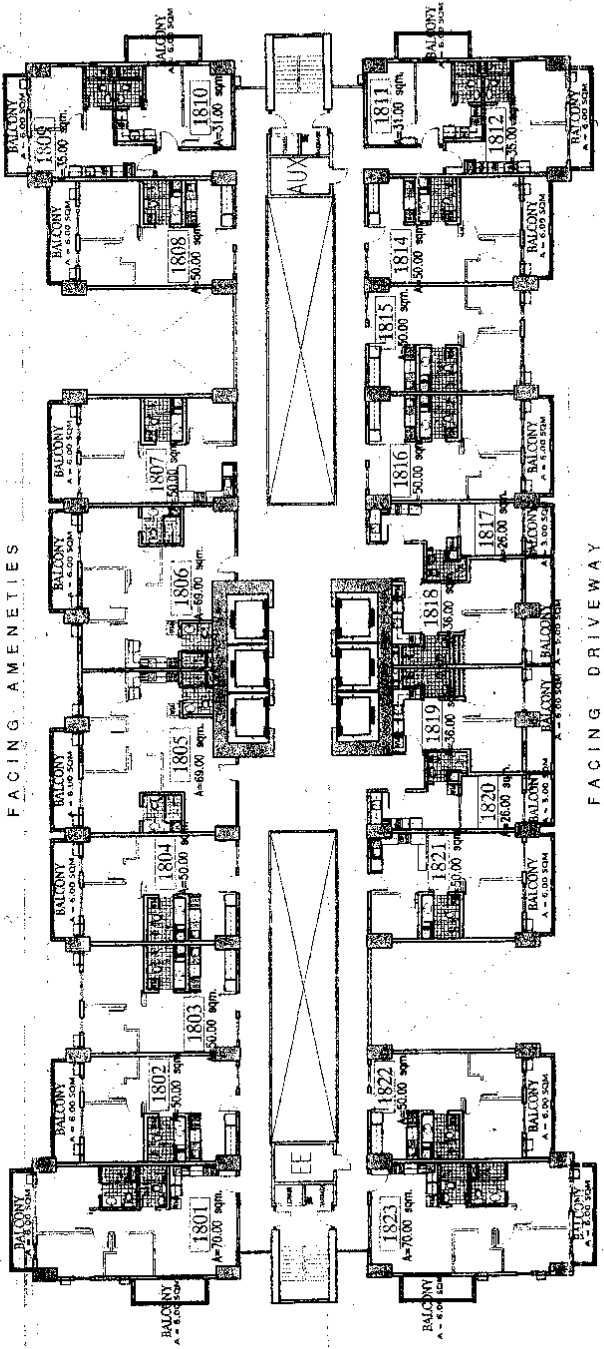


NO. DATE	REVISIONS	DESIGNER	DATE
1	17-25-11 issued for construction	AS	11/17/11
2	17-25-12 corrected drawing error	GSA	1/5/12
		EPC	

**ZINNIA**  
TOWERS  
**NORTH TOWER**  
**17th FLOOR PLAN**  
5 January 2012

NOTE:  
LAYOUT IS FOR  
AVAILABILITY PURPOSES ONLY.  
FOR ENLARGED PLANS, PLEASE  
REFER TO INDIVIDUAL UNIT  
LAYOUTS.





REV.	DATE	REVISIONS						
1	11-25-11	Issued for construction						
2	1-9-12	Change balcony type						
<table border="1"> <tr> <td>AS</td> <td>CSA</td> <td>EGC</td> </tr> <tr> <td> </td> <td> </td> <td> </td> </tr> </table>			AS	CSA	EGC			
AS	CSA	EGC						

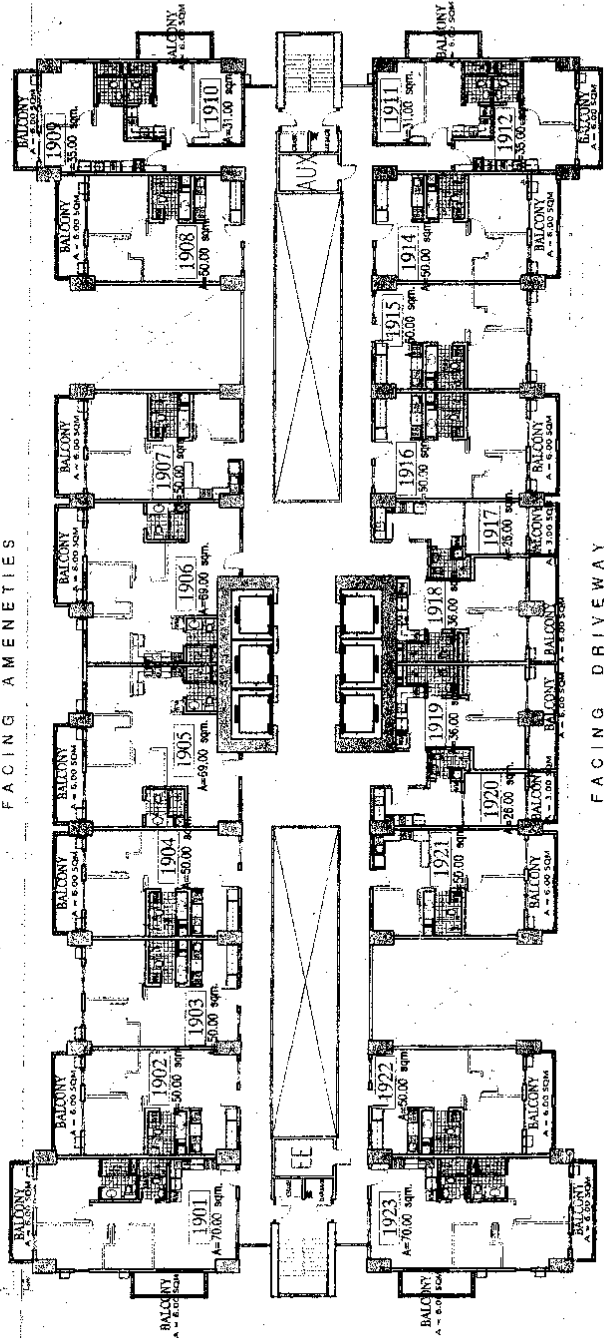
**ZINNIA**  
TOWERS

**NORTH TOWER**  
**18th FLOOR PLAN**  
5 January 2012

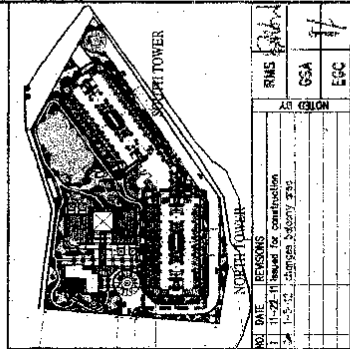
NOTE:  
LAY-OUT IS FOR  
AVAILABILITY PURPOSES ONLY.  
FOR ENLARGED PLANS PLEASE  
REFER TO INDIVIDUAL UNIT  
LAY-OUTS.



FACING AMENITIES



FACING DRIVEWAY



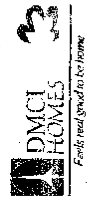
NO. DATE	REVISIONS	RMS	DATE
1	11-22-11 based for construction	GSA	
2	1-5-12 change history 2/25	ECC	
		AR	CELEON

ZINNIA  
TOWERS

**NORTH TOWER**  
**19th FLOOR PLAN**

5 January 2012

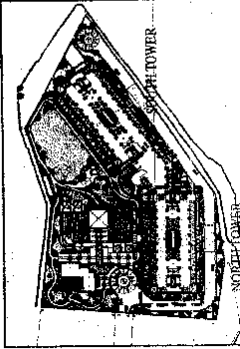
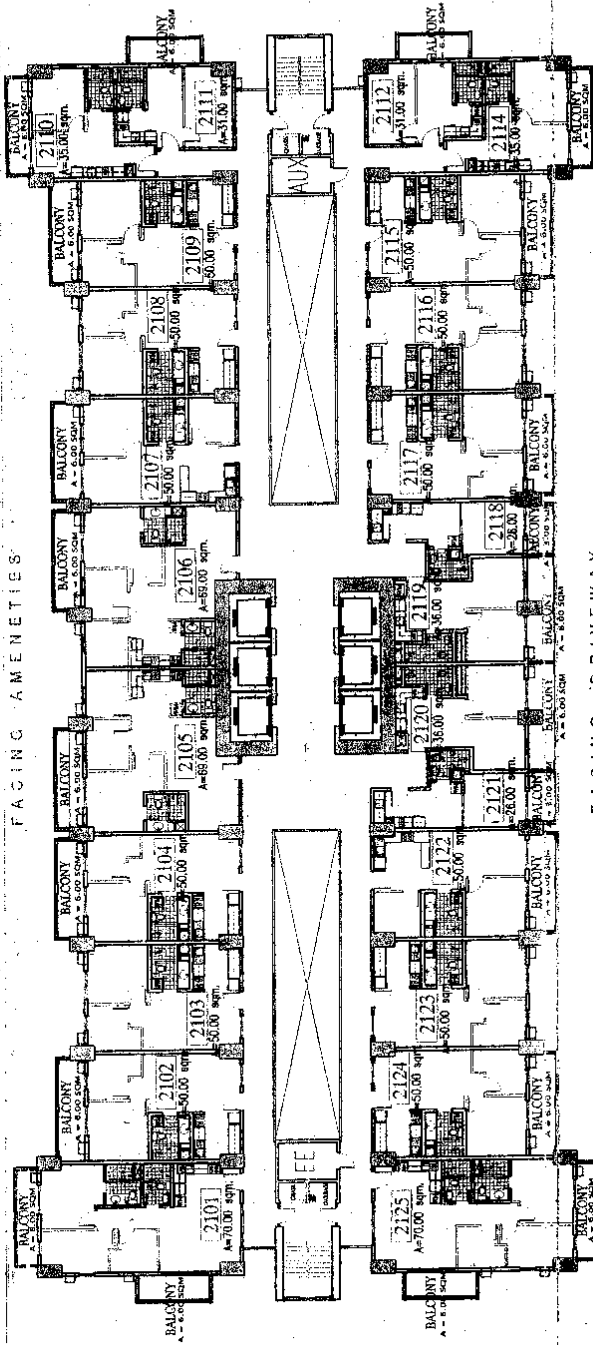
NOTE:  
LAY-OUT IS FOR  
AVAILABILITY PURPOSES ONLY  
FOR ENLARGED PLANS, PLEASE  
REFER TO INDIVIDUAL UNIT  
LAY-OUTS.





FACING AMENITIES

FACING DRIVEWAY



REV	DATE	DESCRIPTION
1	12/16/11	ISSUE FOR PERMITS
2	1/5/12	REVISED PERMITS



**ZINNIA**  
TOWERS

**NORTH TOWER**  
**21st FLOOR PLAN**

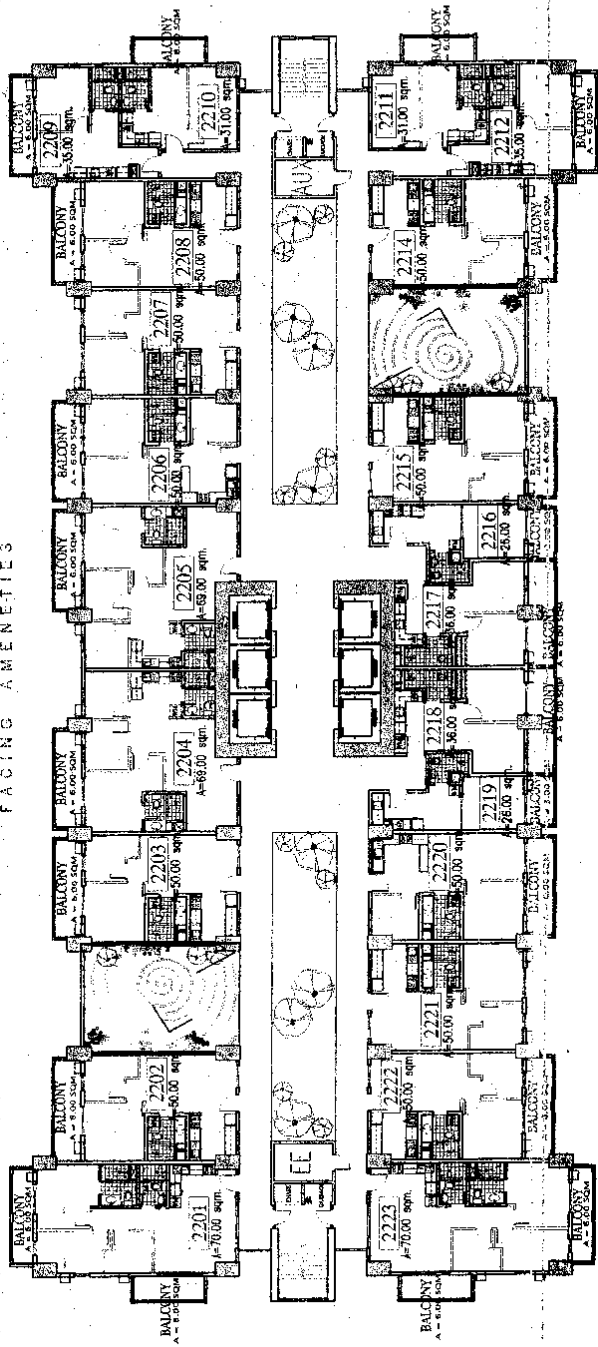
5 January 2012



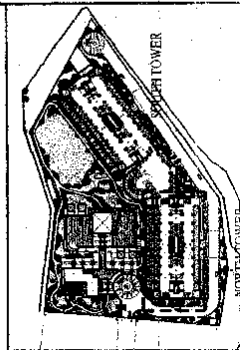
**DMCI**  
**HOUSES**

Feels like you're at home.

FACING AMENITIES



FACING DRIVEWAY



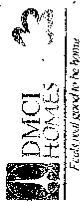
NO.	DATE	REVISIONS	PLM	SSA	ECC
1	11-20-11	Issued for construction			
2	1-5-12	Change balcony area			

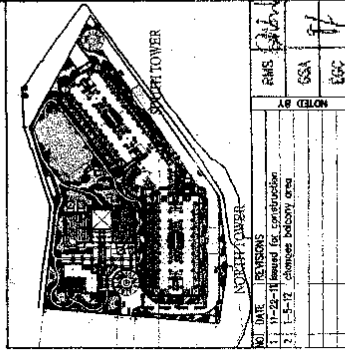
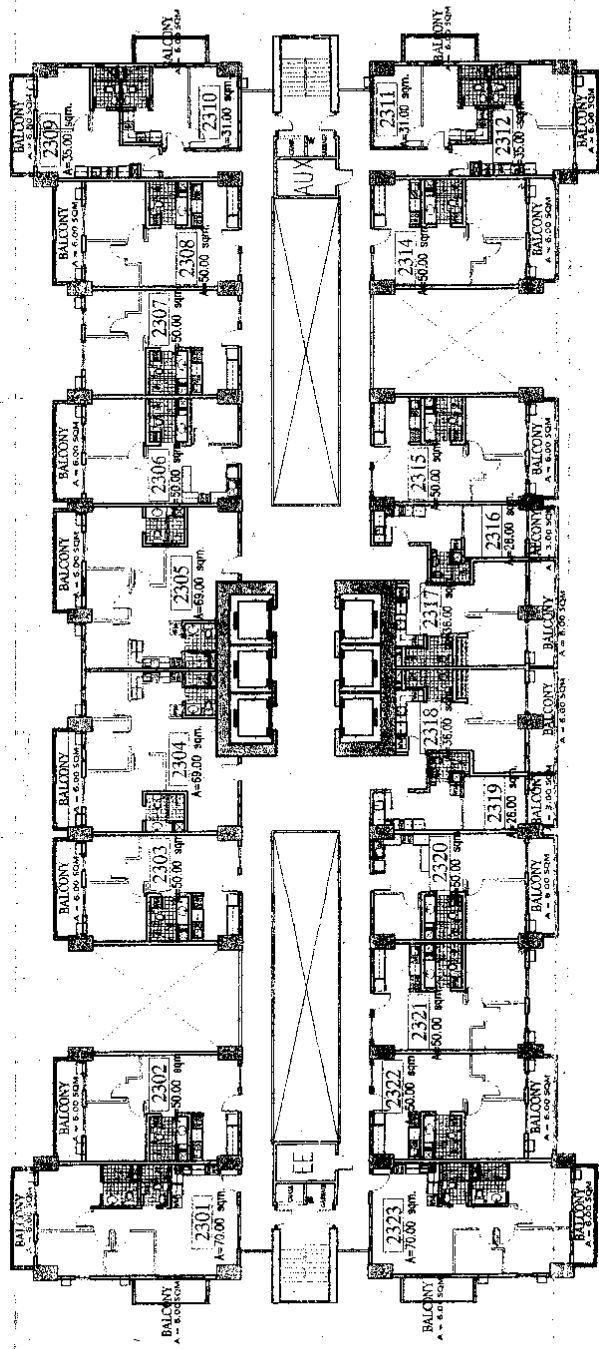


**NORTH TOWER**  
**22nd FLOOR PLAN**

5 January 2012

NOTE:  
LAY-OUT IS FOR  
AVAILABILITY PURPOSES ONLY.  
FOR THE EXACT PLANS, PLEASE  
REFER TO INDIVIDUAL UNIT  
LAY-OUTS.





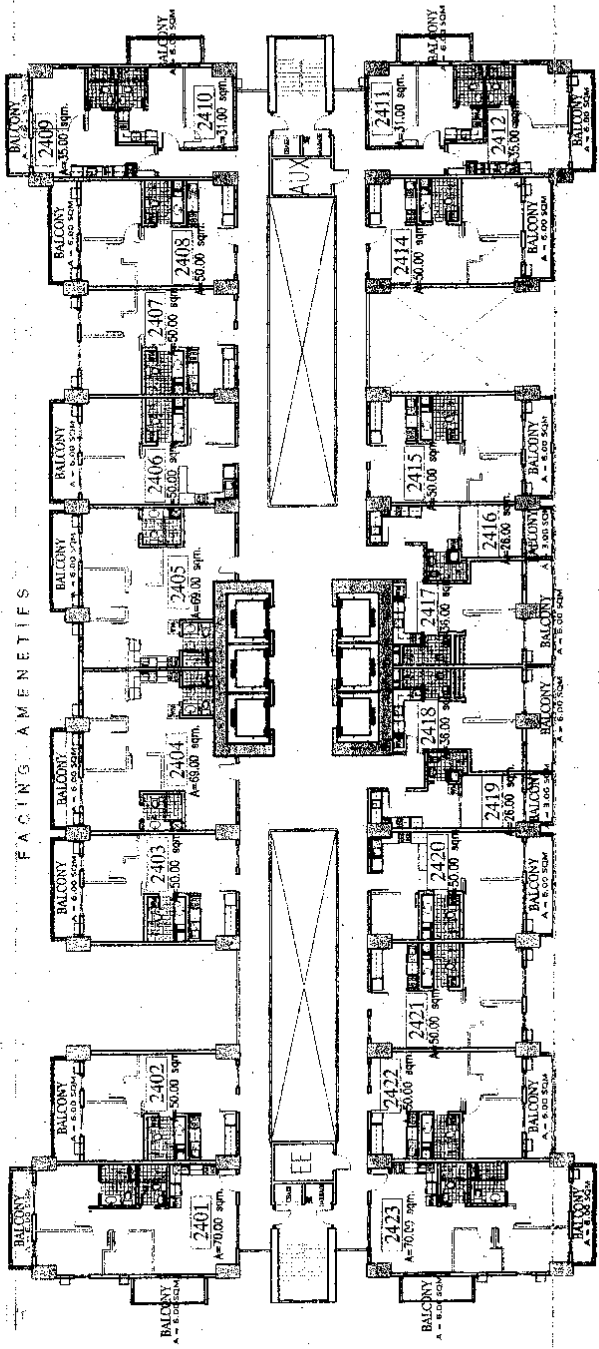
DATE	1/5/12
BY	REVISIONS
1. 10-25-11	REVISED FOR CONSTRUCTION
2. 11-15-11	CHANGED BALCONY AREA
3. 12-12-11	CHANGED BALCONY AREA
4. 12-12-11	CHANGED BALCONY AREA
5. 12-12-11	CHANGED BALCONY AREA
6. 12-12-11	CHANGED BALCONY AREA
7. 12-12-11	CHANGED BALCONY AREA
8. 12-12-11	CHANGED BALCONY AREA
9. 12-12-11	CHANGED BALCONY AREA
10. 12-12-11	CHANGED BALCONY AREA
11. 12-12-11	CHANGED BALCONY AREA
12. 12-12-11	CHANGED BALCONY AREA
13. 12-12-11	CHANGED BALCONY AREA
14. 12-12-11	CHANGED BALCONY AREA
15. 12-12-11	CHANGED BALCONY AREA
16. 12-12-11	CHANGED BALCONY AREA
17. 12-12-11	CHANGED BALCONY AREA
18. 12-12-11	CHANGED BALCONY AREA
19. 12-12-11	CHANGED BALCONY AREA
20. 12-12-11	CHANGED BALCONY AREA
21. 12-12-11	CHANGED BALCONY AREA
22. 12-12-11	CHANGED BALCONY AREA
23. 12-12-11	CHANGED BALCONY AREA
24. 12-12-11	CHANGED BALCONY AREA
25. 12-12-11	CHANGED BALCONY AREA
26. 12-12-11	CHANGED BALCONY AREA
27. 12-12-11	CHANGED BALCONY AREA
28. 12-12-11	CHANGED BALCONY AREA
29. 12-12-11	CHANGED BALCONY AREA
30. 12-12-11	CHANGED BALCONY AREA
31. 12-12-11	CHANGED BALCONY AREA
32. 12-12-11	CHANGED BALCONY AREA
33. 12-12-11	CHANGED BALCONY AREA
34. 12-12-11	CHANGED BALCONY AREA
35. 12-12-11	CHANGED BALCONY AREA
36. 12-12-11	CHANGED BALCONY AREA
37. 12-12-11	CHANGED BALCONY AREA
38. 12-12-11	CHANGED BALCONY AREA
39. 12-12-11	CHANGED BALCONY AREA
40. 12-12-11	CHANGED BALCONY AREA
41. 12-12-11	CHANGED BALCONY AREA
42. 12-12-11	CHANGED BALCONY AREA
43. 12-12-11	CHANGED BALCONY AREA
44. 12-12-11	CHANGED BALCONY AREA
45. 12-12-11	CHANGED BALCONY AREA
46. 12-12-11	CHANGED BALCONY AREA
47. 12-12-11	CHANGED BALCONY AREA
48. 12-12-11	CHANGED BALCONY AREA
49. 12-12-11	CHANGED BALCONY AREA
50. 12-12-11	CHANGED BALCONY AREA
51. 12-12-11	CHANGED BALCONY AREA
52. 12-12-11	CHANGED BALCONY AREA
53. 12-12-11	CHANGED BALCONY AREA
54. 12-12-11	CHANGED BALCONY AREA
55. 12-12-11	CHANGED BALCONY AREA
56. 12-12-11	CHANGED BALCONY AREA
57. 12-12-11	CHANGED BALCONY AREA
58. 12-12-11	CHANGED BALCONY AREA
59. 12-12-11	CHANGED BALCONY AREA
60. 12-12-11	CHANGED BALCONY AREA
61. 12-12-11	CHANGED BALCONY AREA
62. 12-12-11	CHANGED BALCONY AREA
63. 12-12-11	CHANGED BALCONY AREA
64. 12-12-11	CHANGED BALCONY AREA
65. 12-12-11	CHANGED BALCONY AREA
66. 12-12-11	CHANGED BALCONY AREA
67. 12-12-11	CHANGED BALCONY AREA
68. 12-12-11	CHANGED BALCONY AREA
69. 12-12-11	CHANGED BALCONY AREA
70. 12-12-11	CHANGED BALCONY AREA
71. 12-12-11	CHANGED BALCONY AREA
72. 12-12-11	CHANGED BALCONY AREA
73. 12-12-11	CHANGED BALCONY AREA
74. 12-12-11	CHANGED BALCONY AREA
75. 12-12-11	CHANGED BALCONY AREA
76. 12-12-11	CHANGED BALCONY AREA
77. 12-12-11	CHANGED BALCONY AREA
78. 12-12-11	CHANGED BALCONY AREA
79. 12-12-11	CHANGED BALCONY AREA
80. 12-12-11	CHANGED BALCONY AREA
81. 12-12-11	CHANGED BALCONY AREA
82. 12-12-11	CHANGED BALCONY AREA
83. 12-12-11	CHANGED BALCONY AREA
84. 12-12-11	CHANGED BALCONY AREA
85. 12-12-11	CHANGED BALCONY AREA
86. 12-12-11	CHANGED BALCONY AREA
87. 12-12-11	CHANGED BALCONY AREA
88. 12-12-11	CHANGED BALCONY AREA
89. 12-12-11	CHANGED BALCONY AREA
90. 12-12-11	CHANGED BALCONY AREA
91. 12-12-11	CHANGED BALCONY AREA
92. 12-12-11	CHANGED BALCONY AREA
93. 12-12-11	CHANGED BALCONY AREA
94. 12-12-11	CHANGED BALCONY AREA
95. 12-12-11	CHANGED BALCONY AREA
96. 12-12-11	CHANGED BALCONY AREA
97. 12-12-11	CHANGED BALCONY AREA
98. 12-12-11	CHANGED BALCONY AREA
99. 12-12-11	CHANGED BALCONY AREA
100. 12-12-11	CHANGED BALCONY AREA

ZINNIA  
TOWERS  
**NORTH TOWER**  
**23rd FLOOR PLAN**  
5 January 2012

NOTE: LAT-OUT IS FOR AVAILABILITY PURPOSES ONLY. FOR ENLARGED PLANS, PLEASE REFER TO INDIVIDUAL UNIT LAT-OUTS.

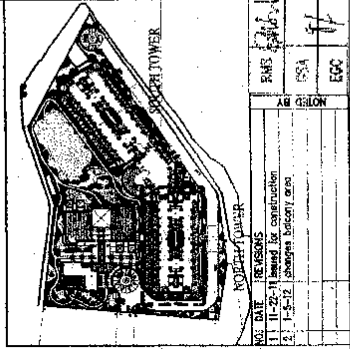


**DMCI HOMES**  
Proudly used around the home.



FACING AMENITIES

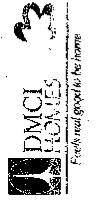
FACING DRIVEWAY



NO. DATE	REVISIONS	BY	CHKD
11	11-24-11 based for construction		
12	12-15-11 change balcony area		
13	1-5-12 change balcony area		
RMS		ESA	ECC
11		11	11

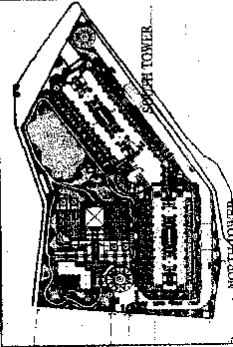
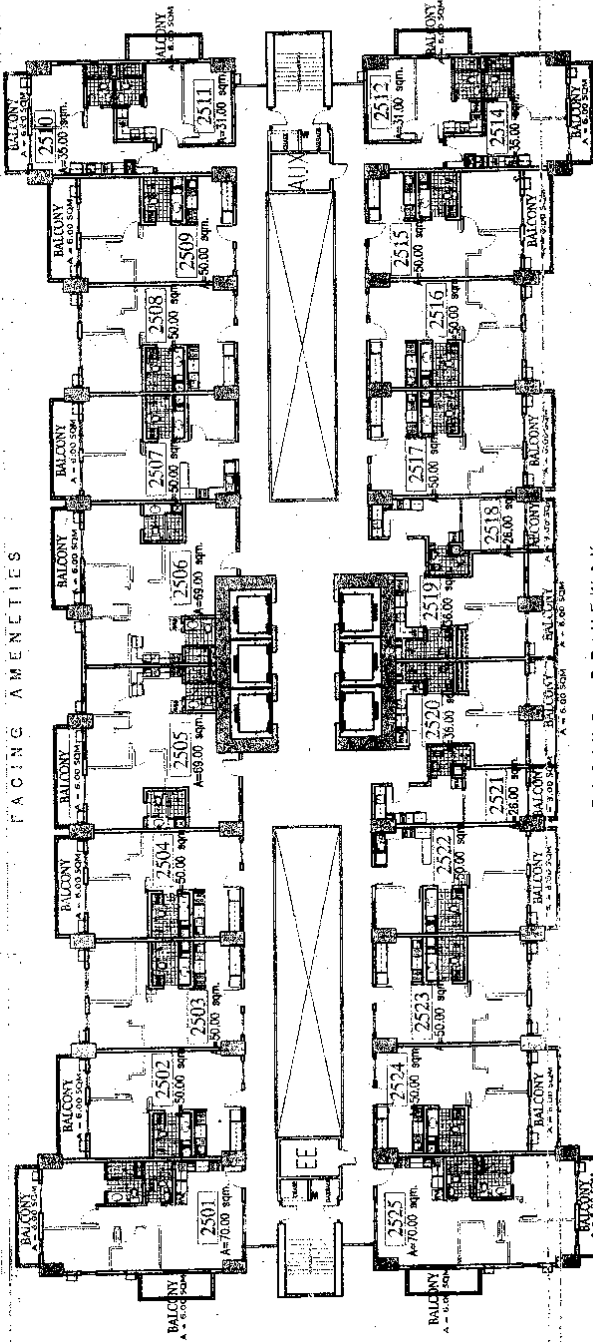
**ZINNIA**  
TOWERS  
**NORTH TOWER**  
**24th FLOOR PLAN**  
5 January 2012

NOTE:  
LAYOUT IS FOR  
AVAILABILITY PURPOSES ONLY.  
FOR ENLARGED PLANS, PLEASE  
REFER TO INDIVIDUAL UNIT  
LAYOUTS.



FACING AMENITIES

FACING DRIVEWAY



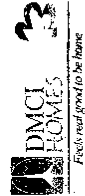
NOT TO SCALE	RMS	CS	EGC
1-12-11 based for construction			
1-12-12 change balcony size			

ZINNIA  
TOWERS

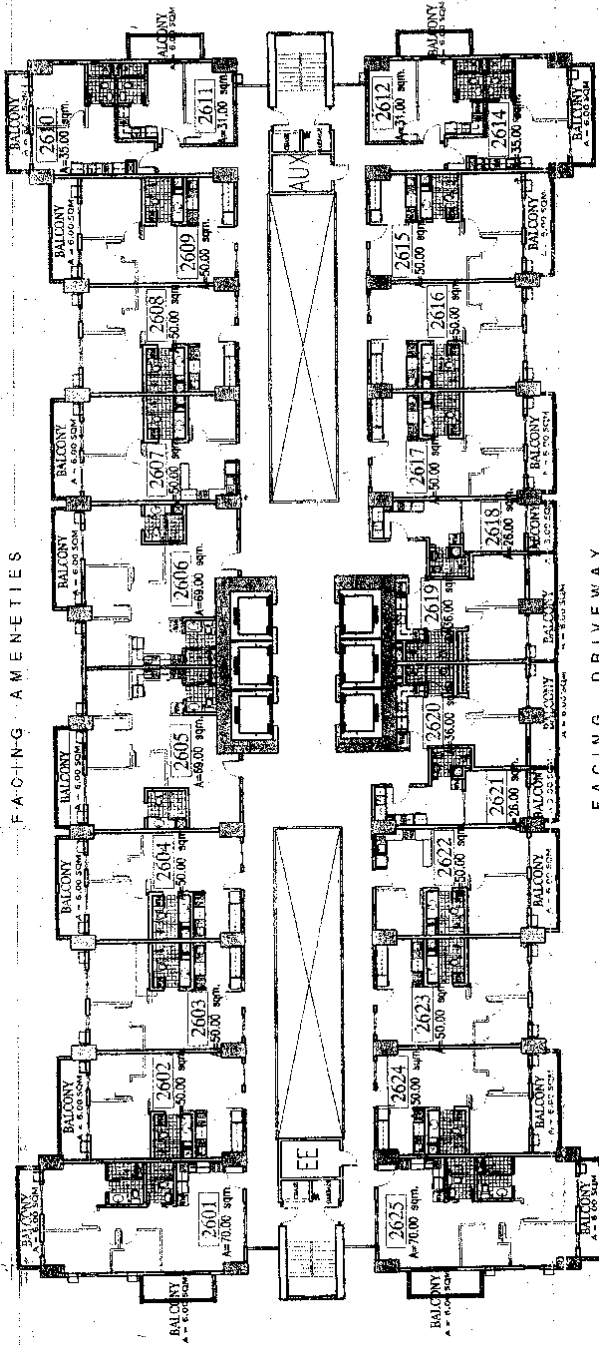
**NORTH TOWER  
25th FLOOR PLAN**

5 January 2012

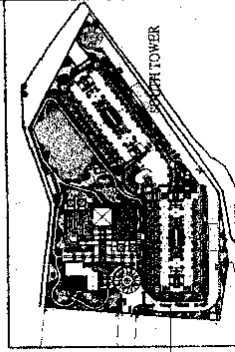
NOTE:  
LAY-OUT IS FOR  
AVAILABILITY PURPOSES ONLY.  
FOR ENLARGED PLANS, PLEASE  
REFER TO INDIVIDUAL UNIT  
LAY-OUTS.



FACING AMENITIES



FACING DRIVEWAY



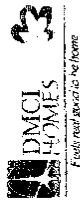
REVISIONS	RMS	CSA	ECC
1. 1-2-12 (Initial layout only)			
2. 1-2-12 (Detailed layout only)			
3. 1-2-12 (Detailed layout only)			

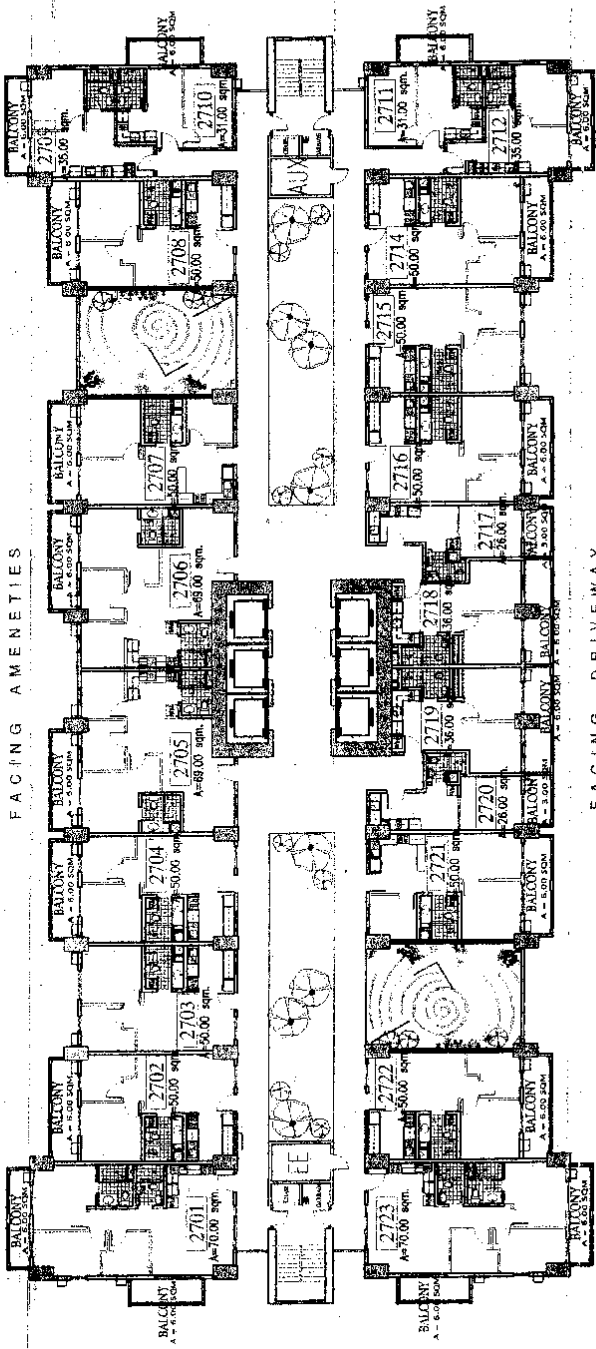


**NORTH TOWER**  
**26th FLOOR PLAN**

5 January 2012

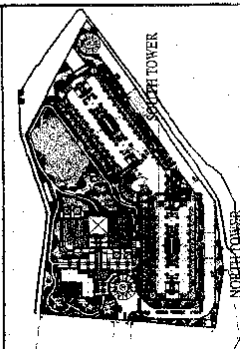
NOTE:  
LAY-OUT IS FOR  
AVAILABILITY PURPOSES ONLY  
FOR ENLARGED PLANS, PLEASE  
REFER TO THE INDICATED UNIT  
LAY-OUTS.





FACING AMENITIES

FACING DRIVEWAY



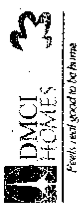
NO.	DATE	REVISIONS
1	11-22-11	Issued for construction
2	1-5-12	Change balcony area

ZINNIA  
TOWERS

**NORTH TOWER**  
**27th FLOOR PLAN**

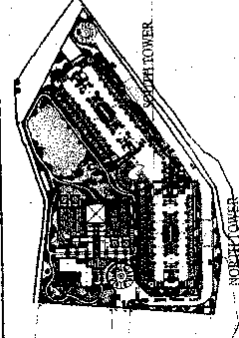
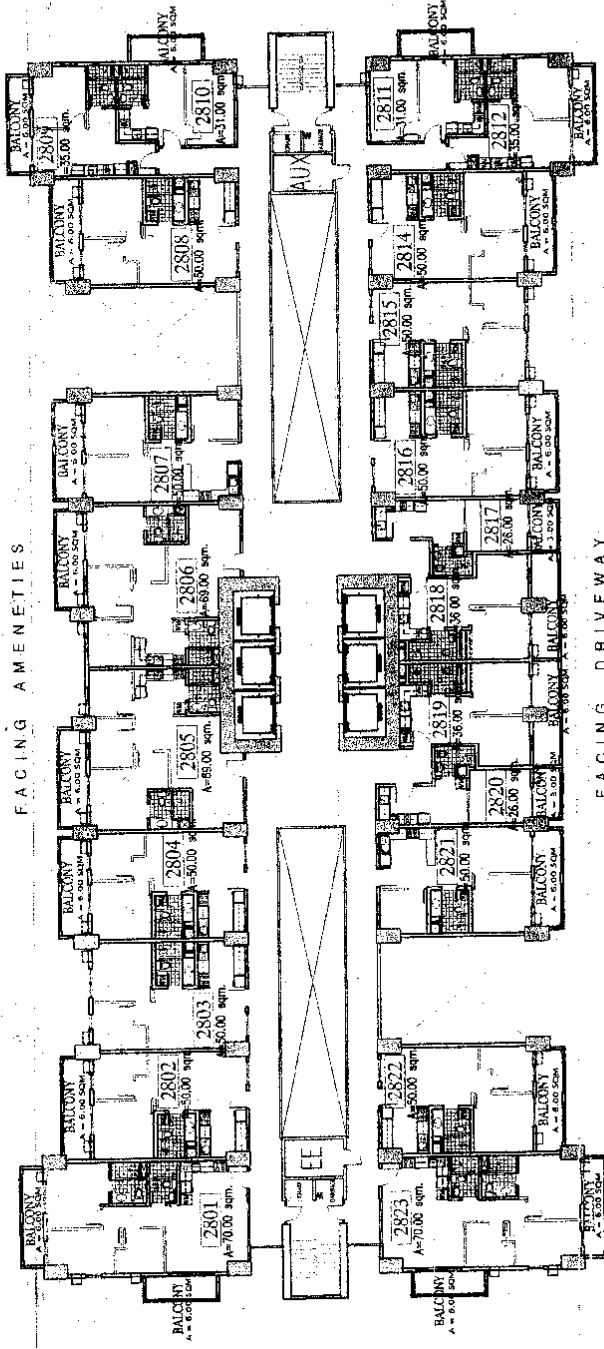
5 January 2012

NOTE:  
LAY-OUT IS FOR  
AVAILABILITY PURPOSES ONLY.  
FOR ENHANCED PLANS PLEASE  
REFER TO INDIVIDUAL UNIT  
LAY-OUTS



FACING AMENITIES

FACING DRIVEWAY



NO.	DATE	REVISIONS
1	11-25-11	Issued for construction
2	1-5-12	Changes balcony area

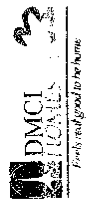
RMS: [Signature]  
 GSA: [Signature]  
 EGC: [Signature]



**NORTH TOWER**  
**28th FLOOR PLAN**

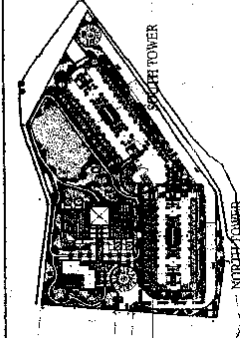
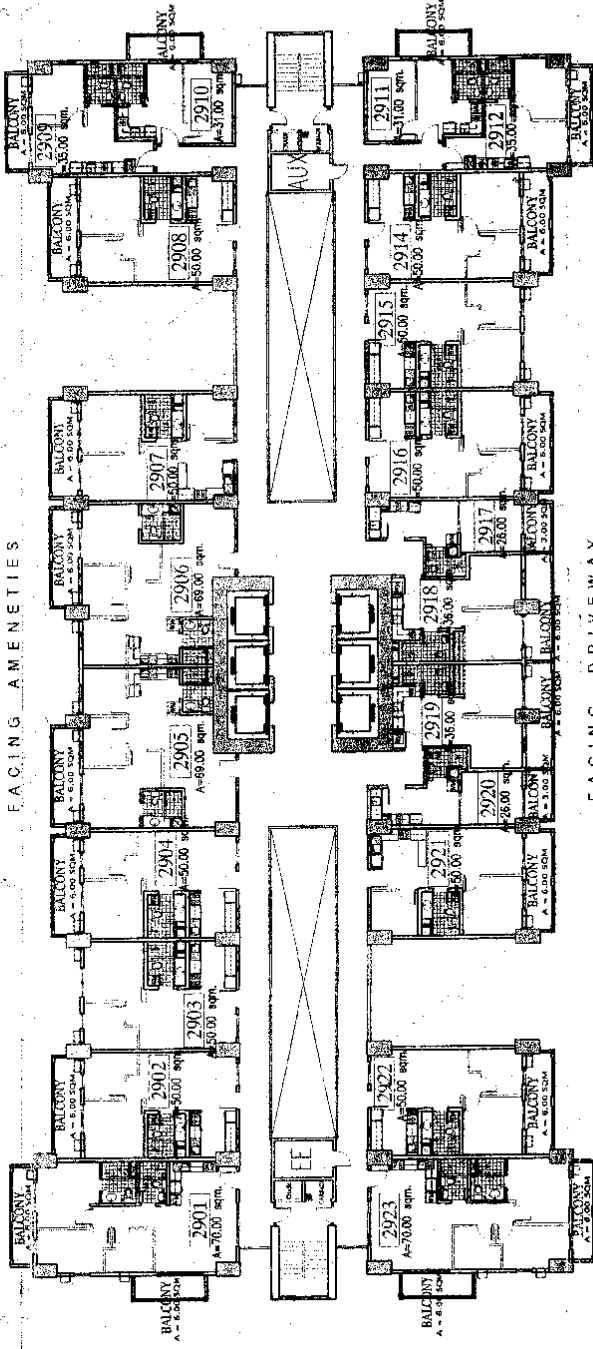
5 January 2012

NOTE:  
LAY-OUT IS FOR  
AVAILABILITY PURPOSES ONLY  
FOR PREPARED PLANS, PLEASE  
REFER TO INDIVIDUAL UNIT  
LAY-OUTS



FACING AMENITIES

FACING DRIVEWAY



NO. DATE	REVISIONS								
1	11-22-11 issued for construction								
2	1-5-12 changed balcony size								
<table border="1"> <tr> <td>APPROVED</td> <td>DATE</td> </tr> <tr> <td>RMS</td> <td>11/22/11</td> </tr> <tr> <td>CSA</td> <td>1/5/12</td> </tr> <tr> <td>EGG</td> <td>1/1/12</td> </tr> </table>		APPROVED	DATE	RMS	11/22/11	CSA	1/5/12	EGG	1/1/12
APPROVED	DATE								
RMS	11/22/11								
CSA	1/5/12								
EGG	1/1/12								

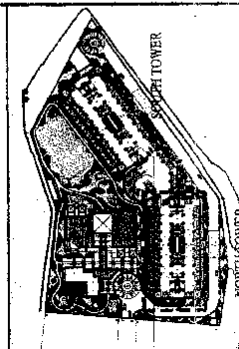
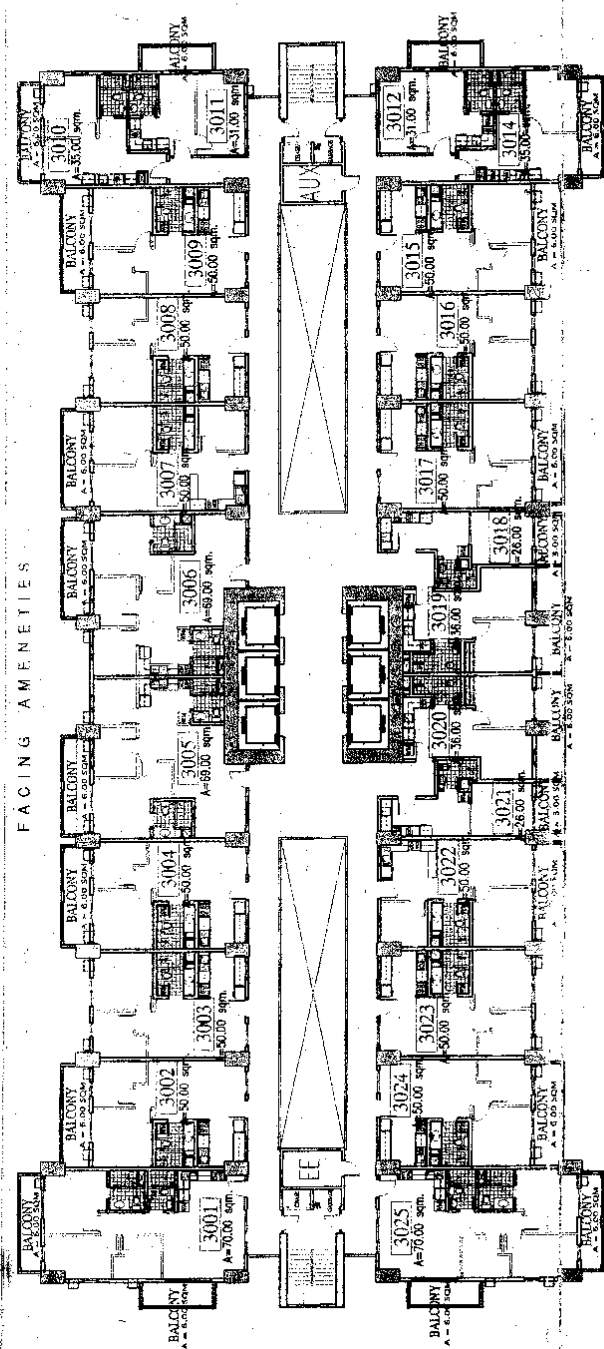
**ZINNIA**  
 REAL ESTATE  
**NORTH TOWER**  
**29TH FLOOR PLAN**  
 5/14/2012

NOTE:  
 LAY-OUT IS FOR  
 INFORMATION PURPOSES ONLY.  
 FOR CHANGED PLACE, PLEASE  
 REFER TO INDIVIDUAL UNIT  
 LAY-OUTS.



**DMCI**  
**HOUSES**  
 People and space in harmony

FACING AMENITIES

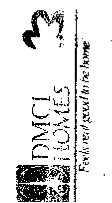


NO.	DATE	REVISIONS
1	11-25-11	Issued for construction
2	12-28-11	Final layout
3	01-05-12	Final layout

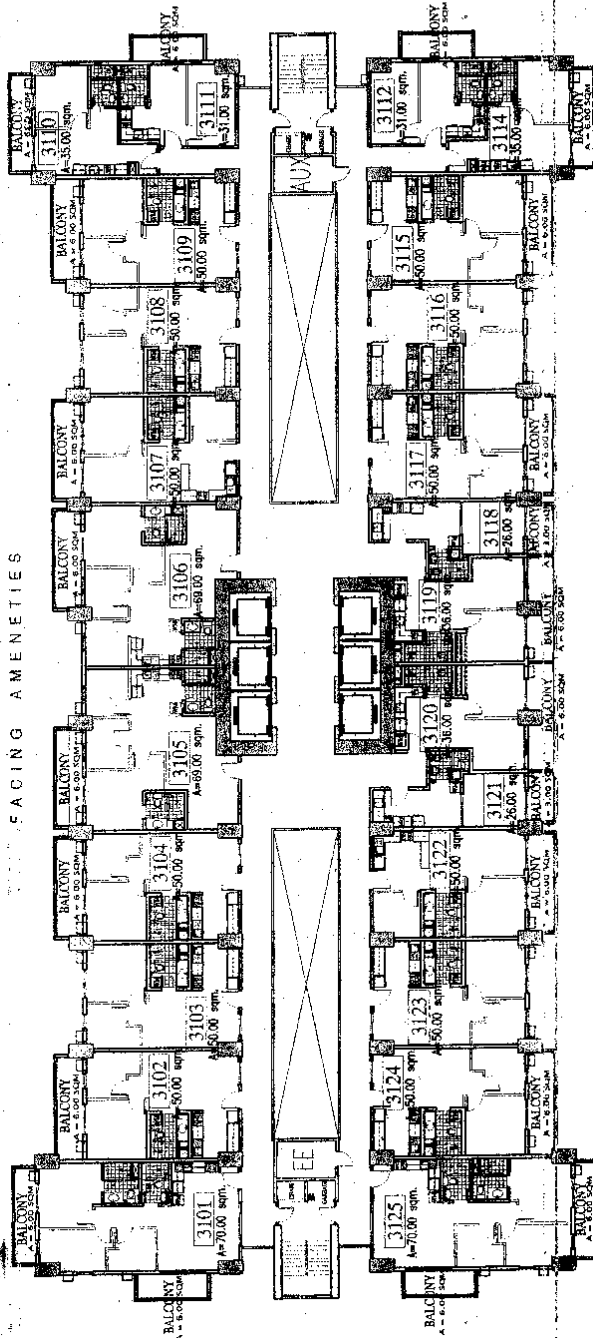


**NORTH TOWER**  
**30th FLOOR PLAN**  
5 January 2012

NOTE:  
LAY-OUT IS FOR  
AVAILABILITY PURPOSES ONLY.  
FOR ENLARGED PLANS, PLEASE  
REFER TO INDIVIDUAL UNIT  
LAY-OUTS.



FACING AMENITIES



REVISIONS

NO.	DATE	BY	DESCRIPTION
1	11-12-11	MM	Issued for construction
2	12-15-11	MM	Change balcony size

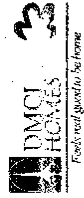
RNS: [Signature]  
 GSA: [Signature]  
 ECC: [Signature]

ZINNIA  
194 EAS

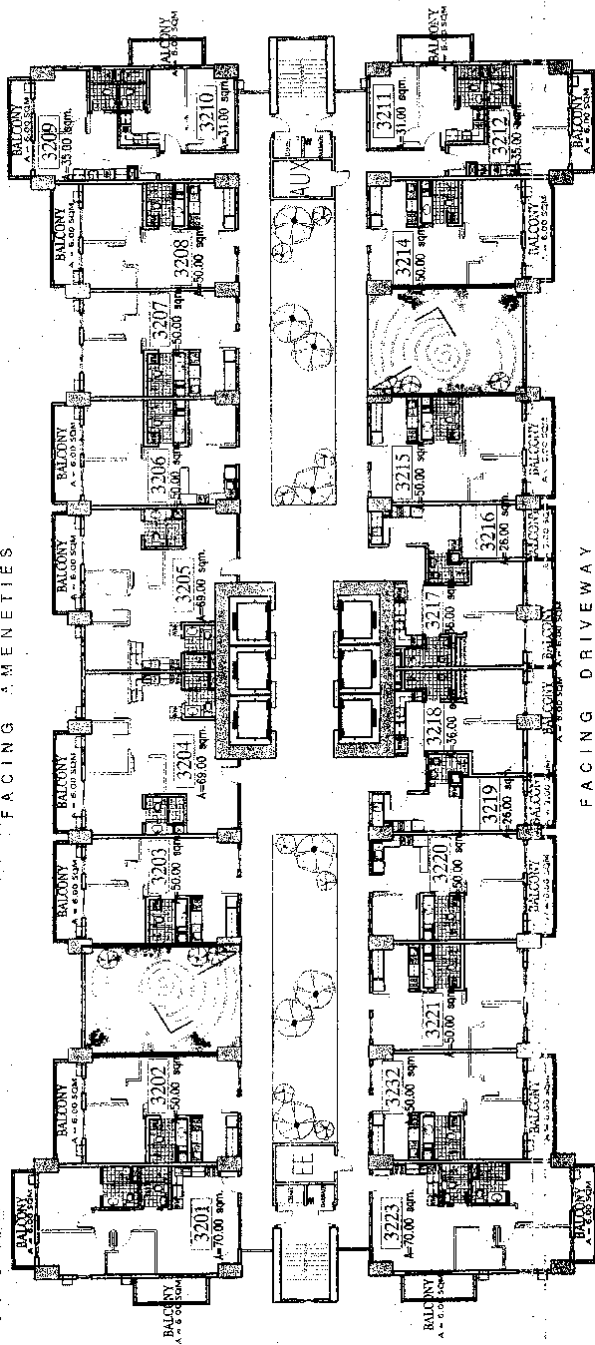
NORTH TOWER  
31st FLOOR PLAN

5 January 2012

NOTE:  
LAY-OUT IS FOR  
AVAILABILITY PURPOSES ONLY.  
FOR ENLARGED PLANS, PLEASE  
REFER TO INDIVIDUAL UNIT  
LAY-OUTS.



FACING AMENITIES



FACING DRIVEWAY

NO. DATE	REVISIONS	RMS	CSA	EGC
1	11-20-12			
2	1-9-13			

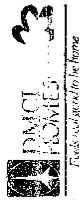
11-20-12: Revised for construction  
1-9-13: changes balcony area

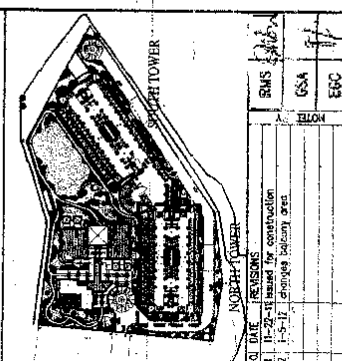
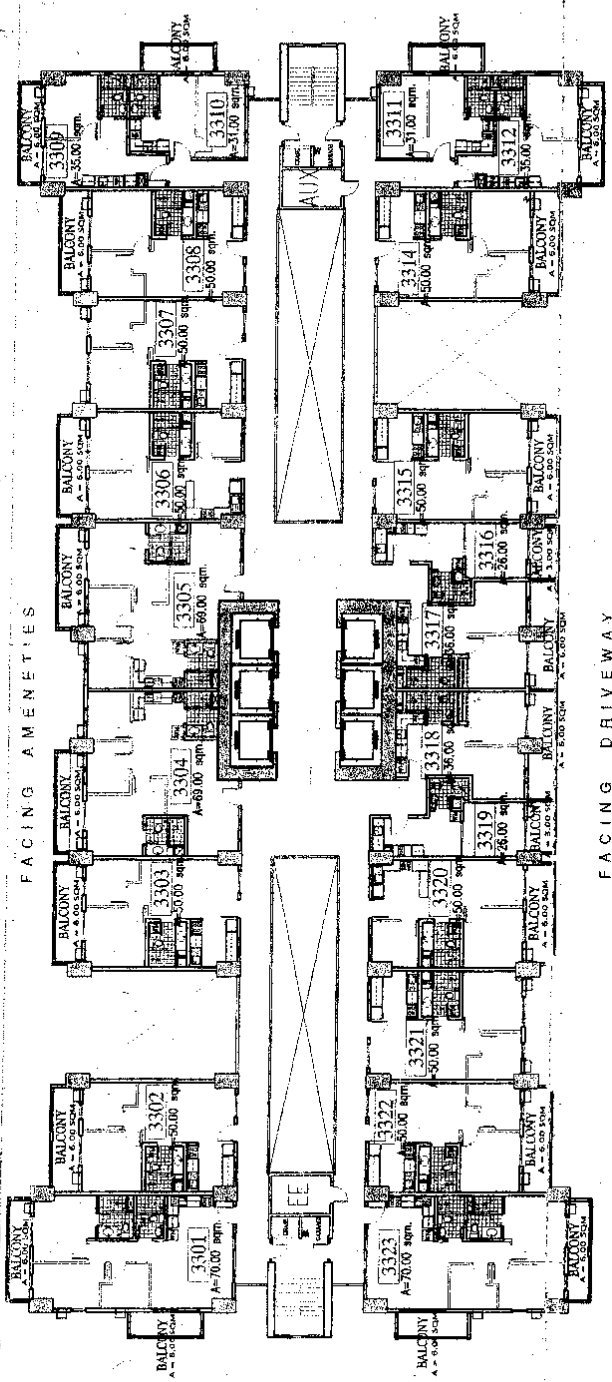
ZINNIA  
TOWERS

**NORTH TOWER  
32nd FLOOR PLAN**

5 January 2012

NOTE:  
LAY-OUT IS FOR  
AVAILABILITY PURPOSES ONLY.  
FOR ENLARGED PLANS, PLEASE  
REFER TO INDIVIDUAL UNIT  
LAY-OUTS.



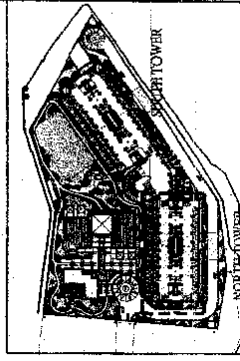
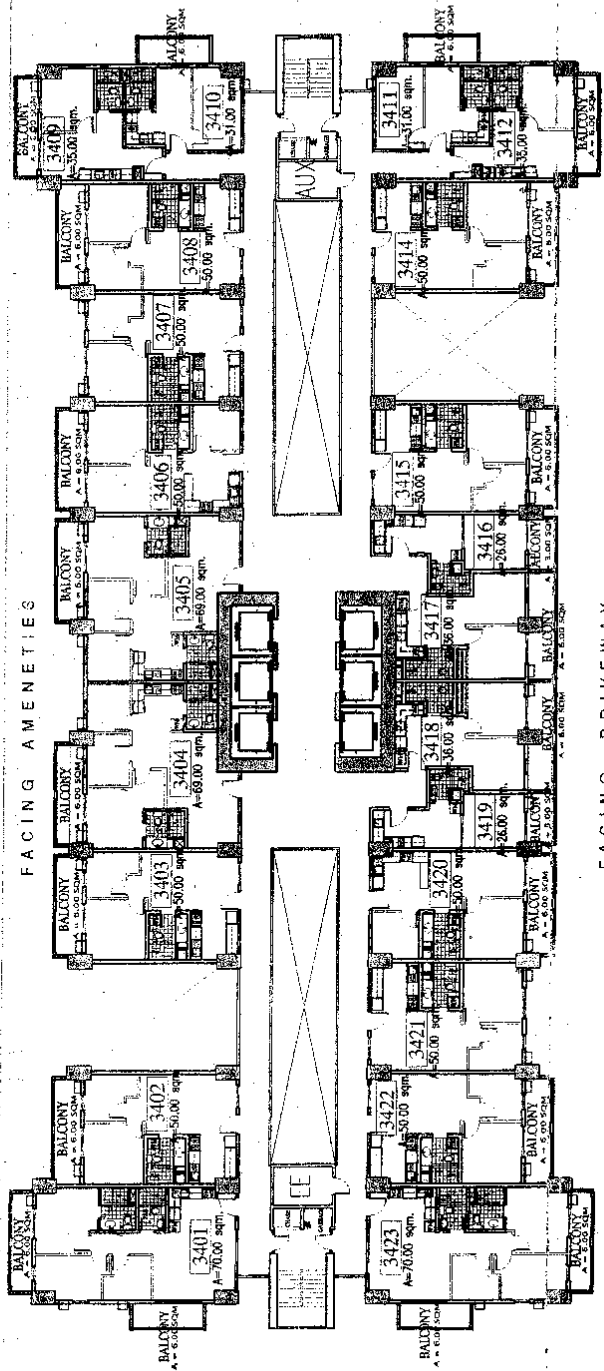


NO.	REVISIONS	DATE	BY
1	Revised for construction		
2	Revised balcony area		

**ZINNIA TOWERS**  
**NORTH TOWER**  
**33rd FLOOR PLAN**  
 5 January 2012

NOTE:  
 LAY-OUT IS FOR  
 AVAILABILITY PURPOSES ONLY.  
 FOR ENLARGED PLANS, PLEASE  
 REFER TO INDIVIDUAL UNIT  
 LAY-OUTS.





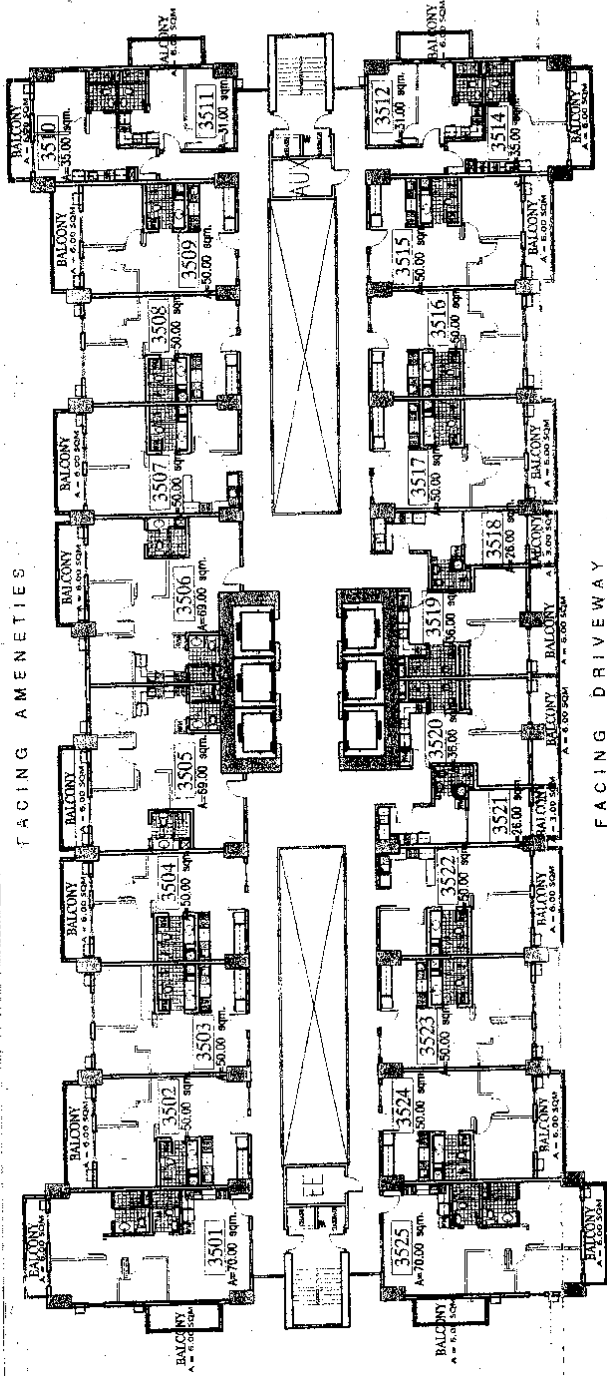
NO. DATE	REVISIONS	RMS	USA	EGC
	1-2-11 Revised for construction			
	2-1-11 Check, Changes based on final			

**ZINNIA  
TOWERS**  
**NORTH TOWER**  
**34th FLOOR PLAN**  
5 January 2012

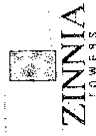
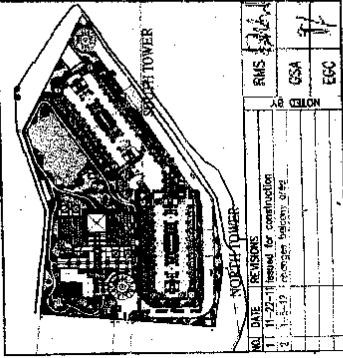
NOTE:  
LAYOUT IS FOR  
AVAILABILITY - PURCHASERS ONLY.  
FOR ENLARGED PLANS, PLEASE  
REFER TO INDIVIDUAL UNIT  
LAYOUTS.



FACING AMENITIES



FACING DRIVEWAY

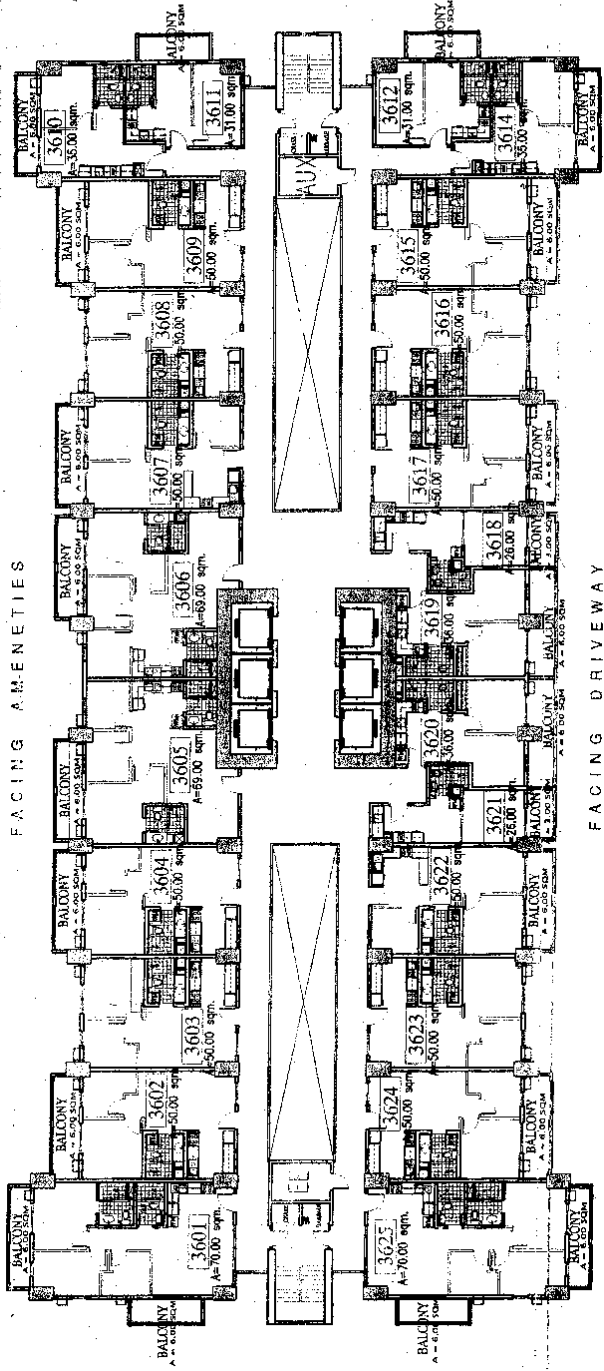


**ZINNIA TOWERS**  
**NORTH TOWER**  
**35th FLOOR PLAN**  
 5 January 2012

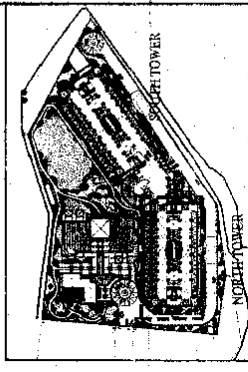
NOTE: LAY-OUT IS FOR AVAILABILITY PURPOSES ONLY. FOR ENLARGED PLANS, PLEASE REFER TO INDIVIDUAL UNIT LAY-OUTS.



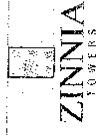
FACING AMENITIES



FACING DRIVEWAY

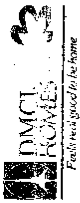


DATE	REVISIONS	RMS	EGC
11/15/11	Issued for construction	AS	EGC
11/15/11	Final layout issued	AS	EGC
		GSA	

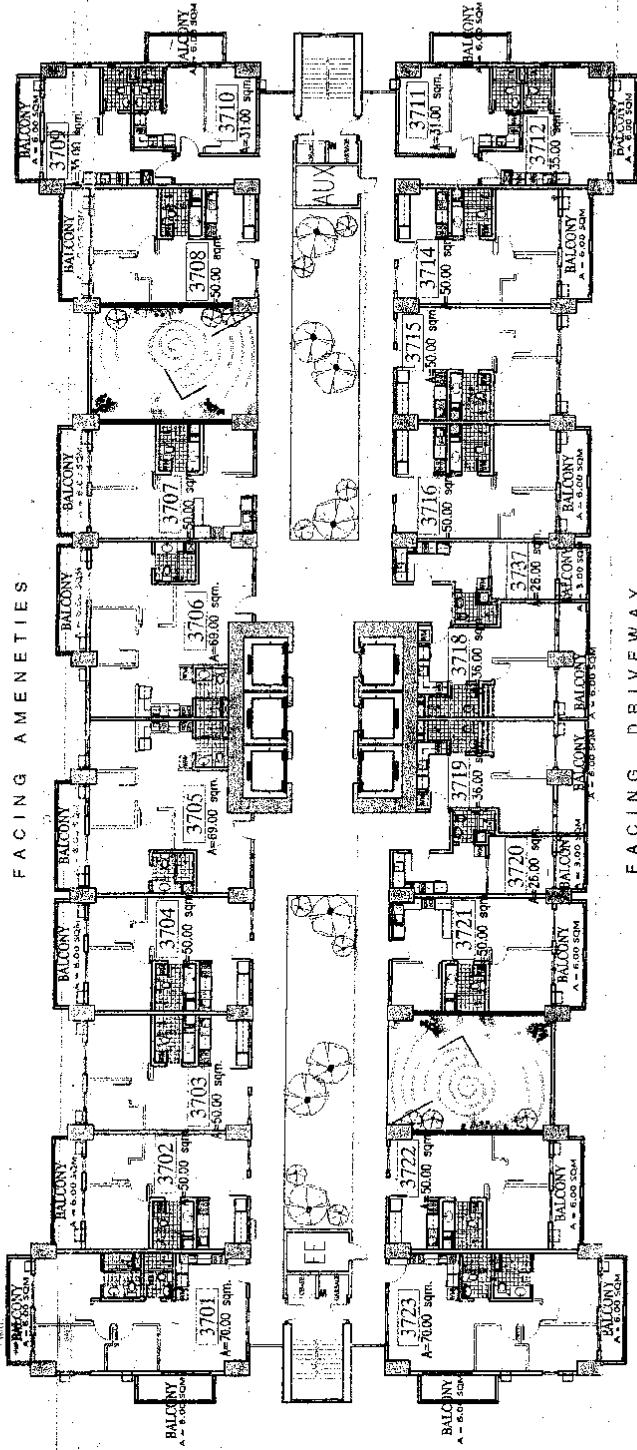


**NORTH TOWER**  
36th FLOOR PLAN  
5 January 2012

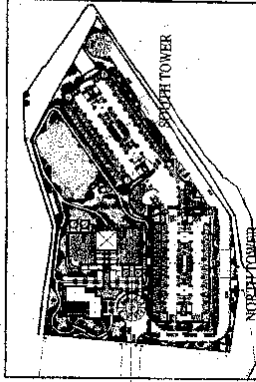
NOTE:  
LAY-OUT IS FOR  
AVAILABILITY PURPOSES ONLY.  
FOR FURNISHED PLANS, PLEASE  
REFER TO INDIVIDUAL UNIT  
LAY-OUTS.



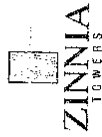
FACING AMENITIES



FACING DRIVEWAY



NOTED BY	RMS	GSA	ECC
DATE	1/16/12	1/16/12	1/16/12
REVISIONS	1. 1-16-12 Revised for competition.		
	2. 1-16-12 Changes layout area.		



**NORTH TOWER**  
**37th FLOOR PLAN**

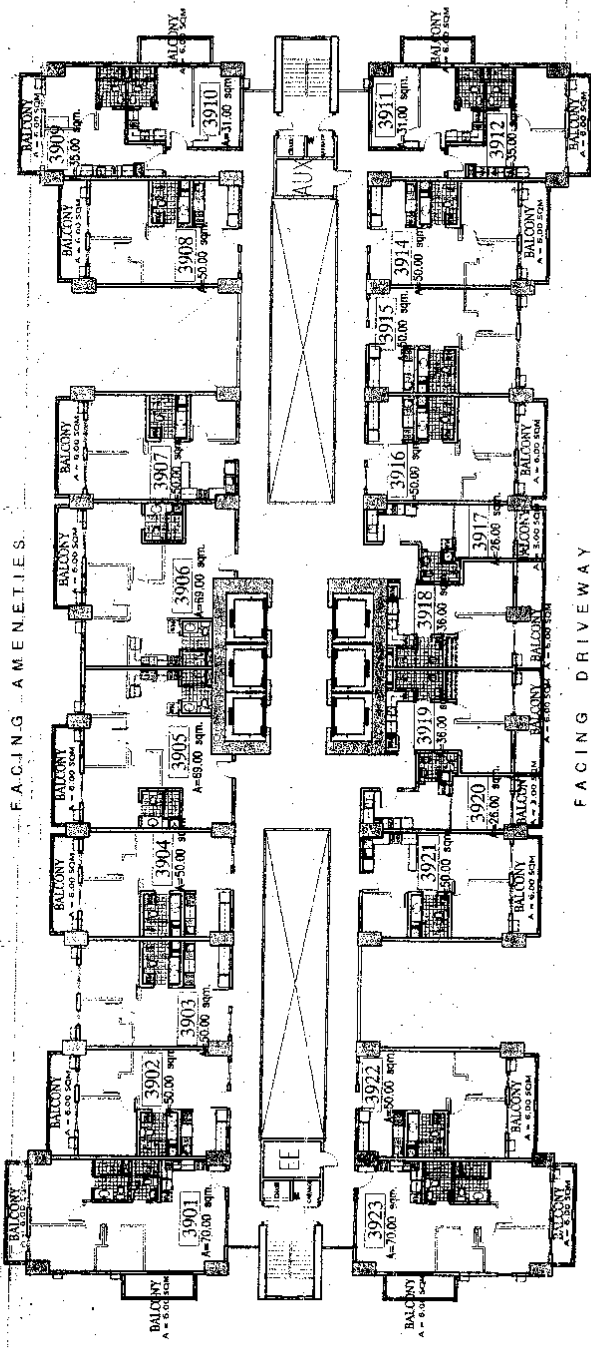
5 January 2012

NOTE:  
LAY-OUT IS FOR  
AVAILABILITY PURPOSES ONLY.  
FOR ENLARGED PLANS, PLEASE  
REFER TO INDIVIDUAL UNIT  
LAY-OUTS.

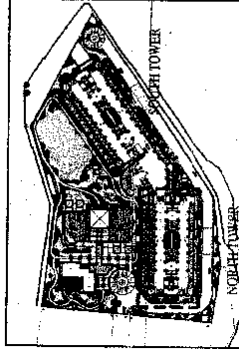




FACING AMENITIES



FACING DRIVEWAY



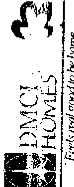
REV	DATE	REVISIONS						
1	11-27-11	Issued for construction						
2	1-5-12	Change deck out area						
<table border="1"> <tr> <td>RNS</td> <td>9/1</td> </tr> <tr> <td>GSA</td> <td></td> </tr> <tr> <td>EGG</td> <td></td> </tr> </table>			RNS	9/1	GSA		EGG	
RNS	9/1							
GSA								
EGG								

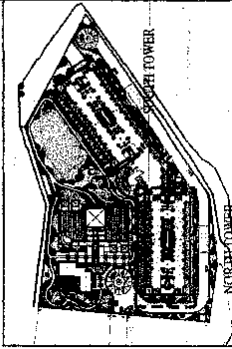
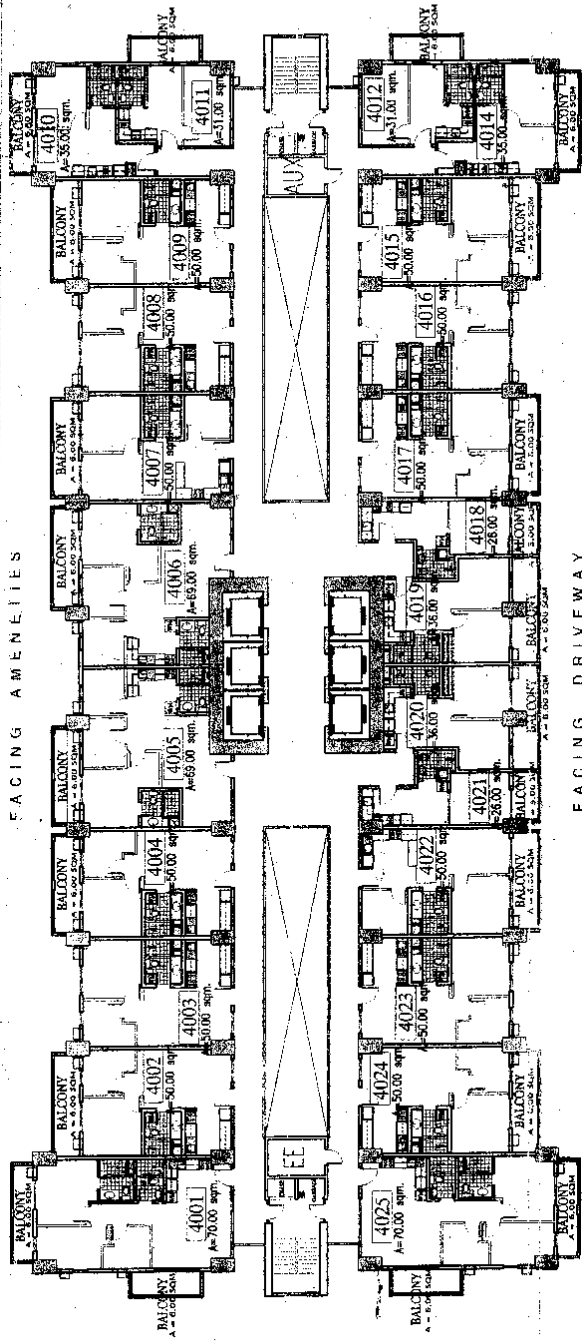
ZINNIA  
TOWERS

**NORTH TOWER**  
**39th FLOOR PLAN**

5 January 2012

NOTE: LAY-OUT IS FOR AVAILABILITY PURPOSES ONLY. FOR ENLARGED PLANS, PLEASE REFER TO INDIVIDUAL UNIT LAY-OUTS.

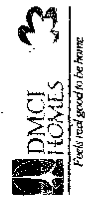


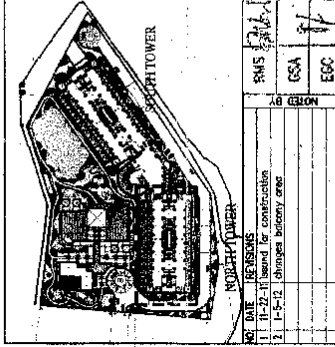
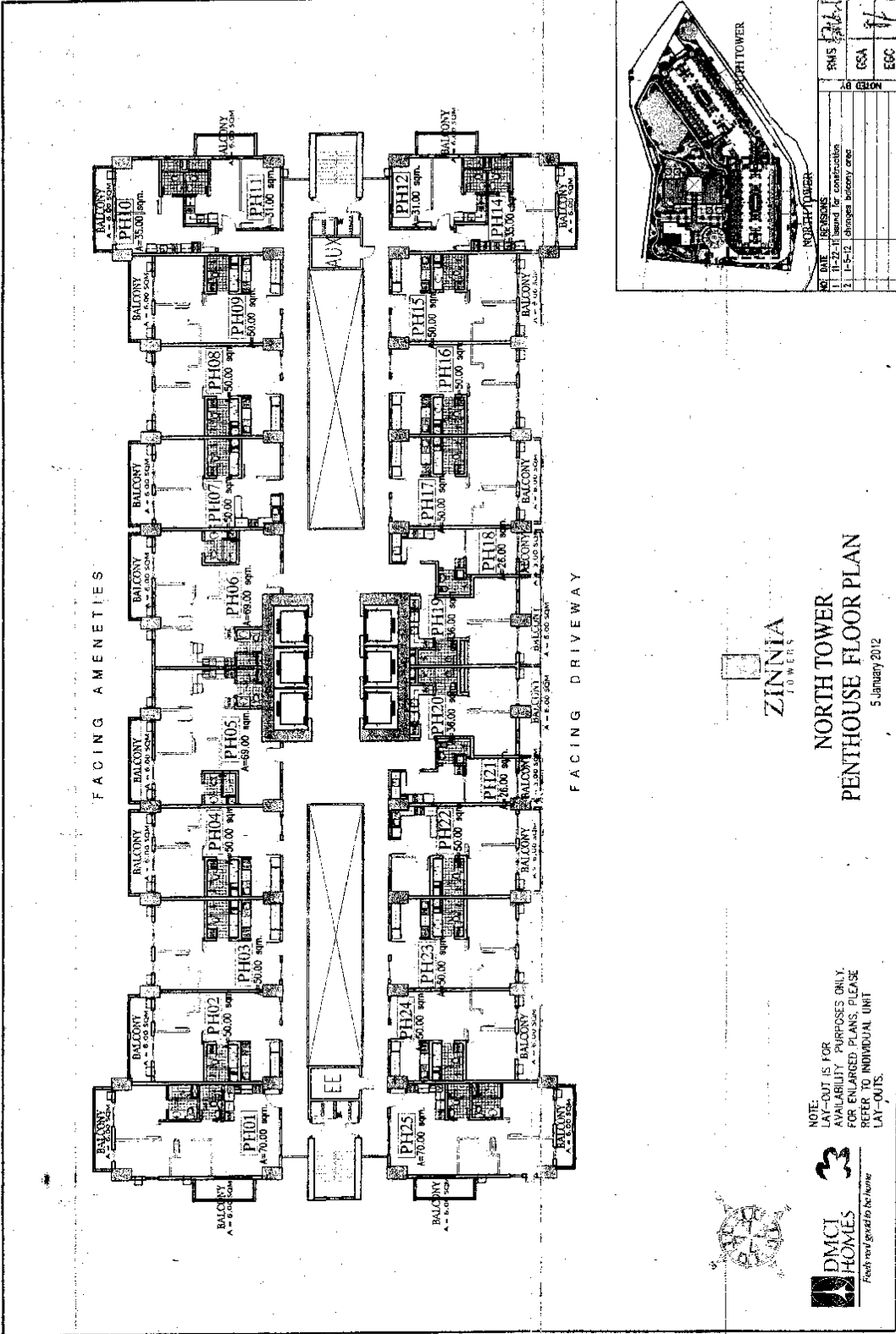



DATE	REVISION	BY	CSA	ECC
	CONSTRUCTION			
	PHASE 1			
	PHASE 2			
	PHASE 3			
	PHASE 4			
	PHASE 5			
	PHASE 6			
	PHASE 7			
	PHASE 8			
	PHASE 9			
	PHASE 10			
	PHASE 11			
	PHASE 12			
	PHASE 13			
	PHASE 14			
	PHASE 15			
	PHASE 16			
	PHASE 17			
	PHASE 18			
	PHASE 19			
	PHASE 20			
	PHASE 21			
	PHASE 22			
	PHASE 23			
	PHASE 24			
	PHASE 25			
	PHASE 26			
	PHASE 27			
	PHASE 28			
	PHASE 29			
	PHASE 30			
	PHASE 31			
	PHASE 32			
	PHASE 33			
	PHASE 34			
	PHASE 35			
	PHASE 36			
	PHASE 37			
	PHASE 38			
	PHASE 39			
	PHASE 40			
	PHASE 41			
	PHASE 42			
	PHASE 43			
	PHASE 44			
	PHASE 45			
	PHASE 46			
	PHASE 47			
	PHASE 48			
	PHASE 49			
	PHASE 50			
	PHASE 51			
	PHASE 52			
	PHASE 53			
	PHASE 54			
	PHASE 55			
	PHASE 56			
	PHASE 57			
	PHASE 58			
	PHASE 59			
	PHASE 60			
	PHASE 61			
	PHASE 62			
	PHASE 63			
	PHASE 64			
	PHASE 65			
	PHASE 66			
	PHASE 67			
	PHASE 68			
	PHASE 69			
	PHASE 70			
	PHASE 71			
	PHASE 72			
	PHASE 73			
	PHASE 74			
	PHASE 75			
	PHASE 76			
	PHASE 77			
	PHASE 78			
	PHASE 79			
	PHASE 80			
	PHASE 81			
	PHASE 82			
	PHASE 83			
	PHASE 84			
	PHASE 85			
	PHASE 86			
	PHASE 87			
	PHASE 88			
	PHASE 89			
	PHASE 90			
	PHASE 91			
	PHASE 92			
	PHASE 93			
	PHASE 94			
	PHASE 95			
	PHASE 96			
	PHASE 97			
	PHASE 98			
	PHASE 99			
	PHASE 100			

ZINNIA TOWERS  
**NORTH TOWER**  
**40th FLOOR PLAN**  
 5 January 2012

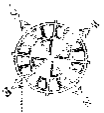
NOTE:  
 LAY-OUT IS FOR  
 AVAILABILITY PURPOSES ONLY.  
 FOR ENLARGED PLANS, PLEASE  
 REFER TO INDIVIDUAL UNIT  
 LAY-OUTS.

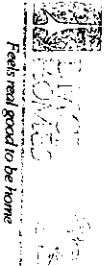
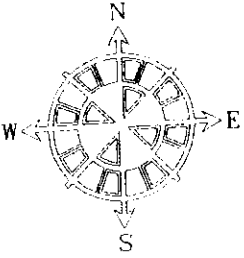




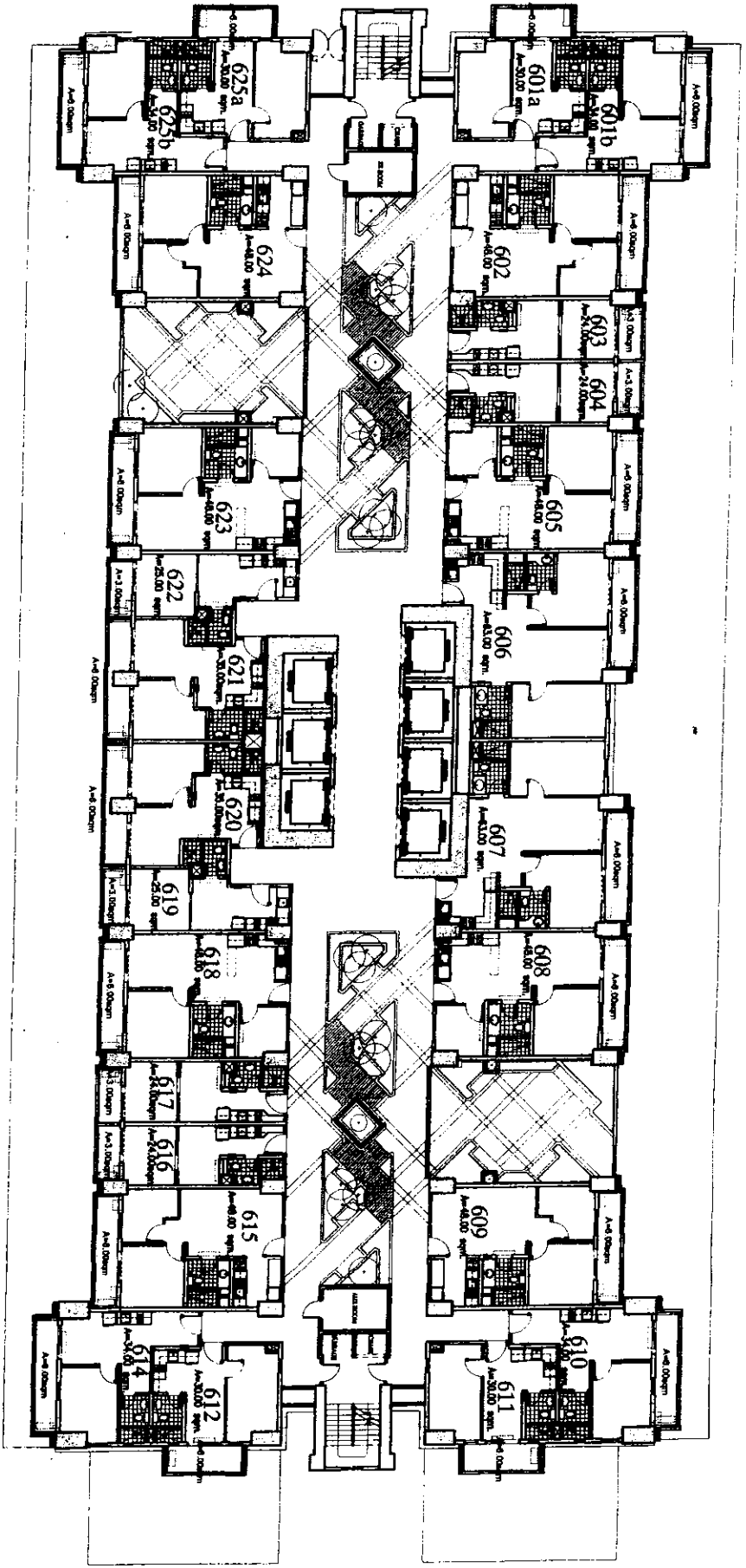
  
**NORTH TOWER**  
**PENTHOUSE FLOOR PLAN**  
 5 January 2012

NOTE:  
 LAY-OUT IS FOR  
 AVAILABILITY PURPOSES ONLY.  
 FOR ENLARGED PLANS PLEASE  
 REFER TO INDIVIDUAL UNIT  
 LAY-OUTS.

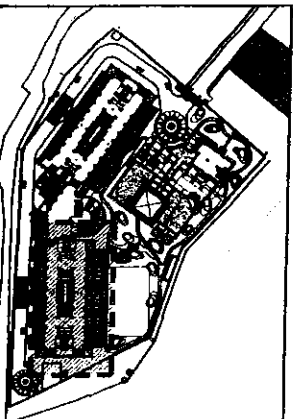




NOTE:  
LAY-OUT IS FOR  
AVAILABILITY PURPOSES ONLY.  
FOR ENLARGED PLANS, PLEASE  
REFER TO INDIVIDUAL UNIT  
LAY-OUTS



**SOUTH TOWER**  
**6th FLOOR PLAN**  
17 SEPTEMBER 2014

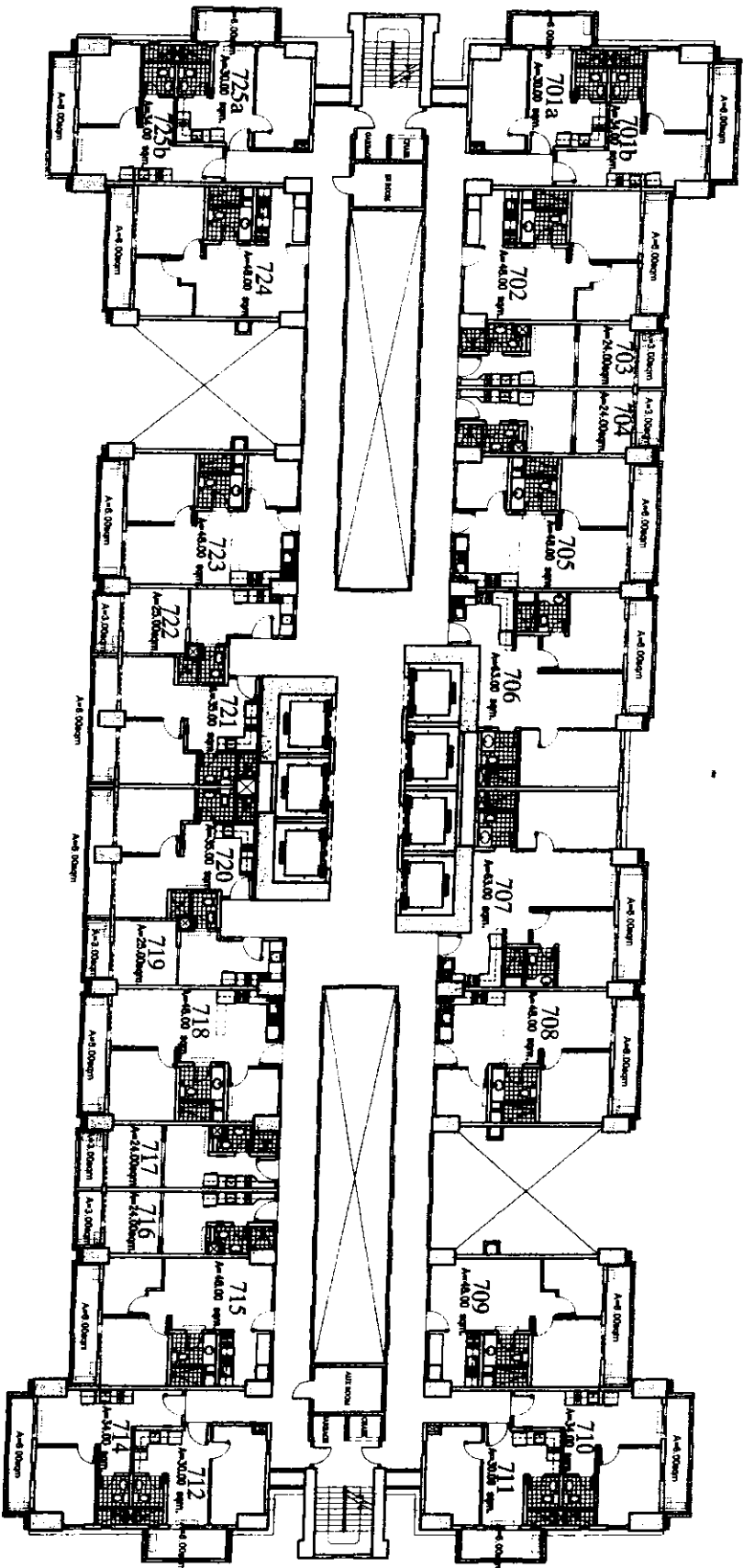
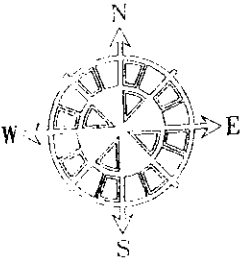


DATE	REVISIONS
NOTED BY	
GSA	RMS
	SWL

9



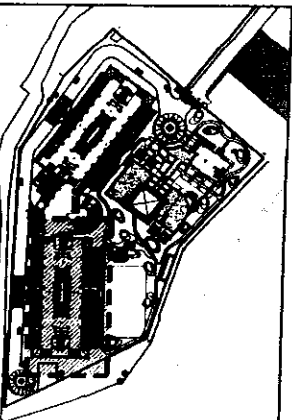
*Feels real good to be home*



NOTE:  
LAY-OUT IS FOR  
AVAILABILITY PURPOSES ONLY.  
FOR ENLARGED PLANS, PLEASE  
REFER TO INDIVIDUAL UNIT  
LAY-OUTS

ZINNIA  
TOWNS

**SOUTH TOWER**  
**7th FLOOR PLAN**  
17 SEPTEMBER 2014



NO. DATE REVISIONS

NOTED BY

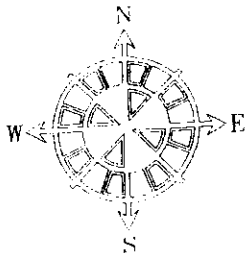
GSA

RMS

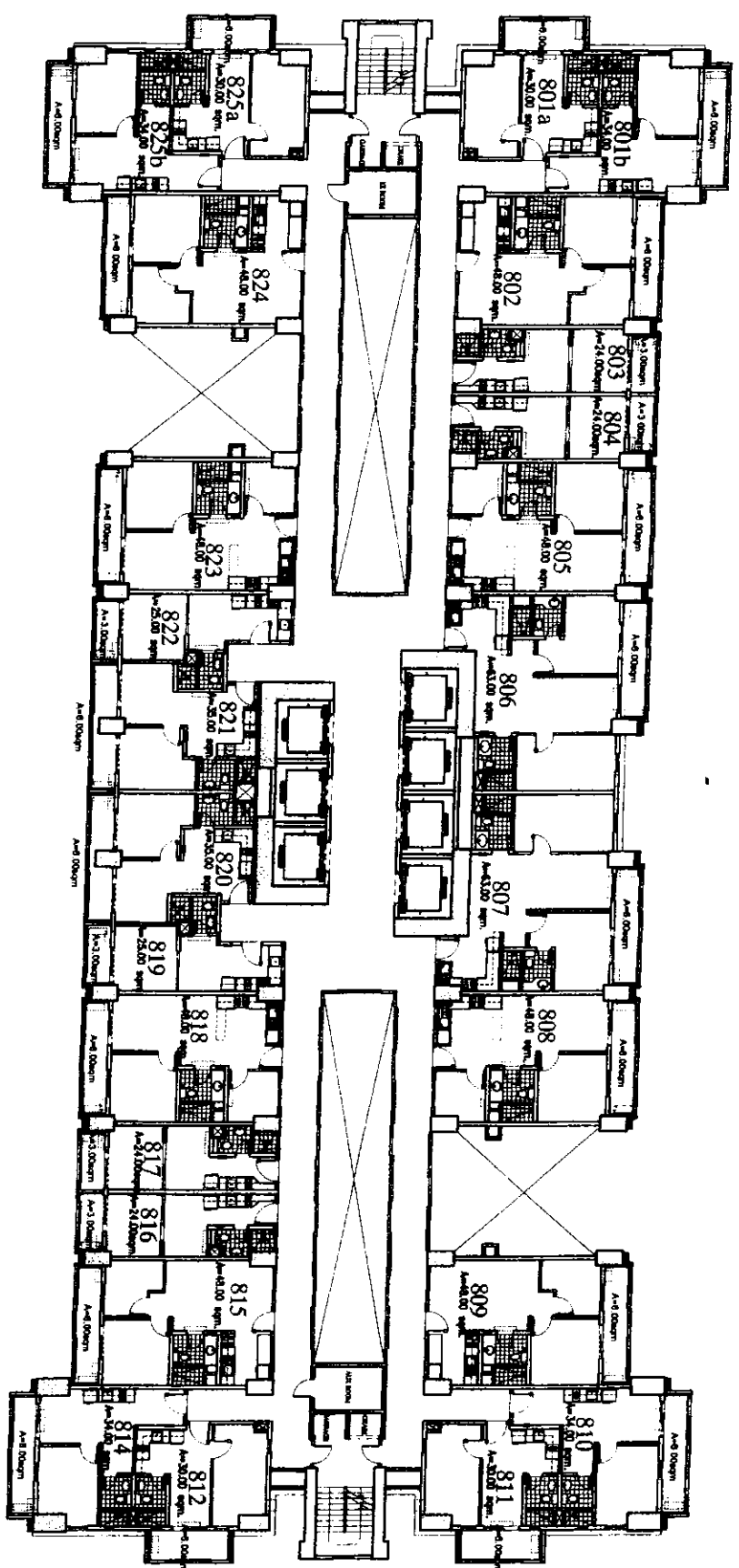
*[Signature]*



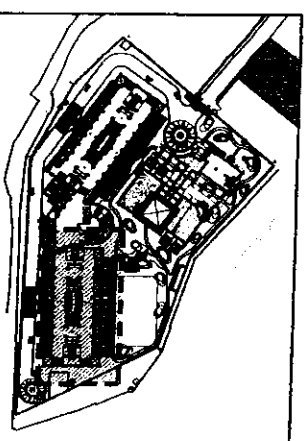
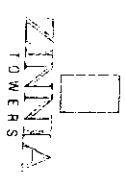
Feels real good to be home.



NOTE:  
LAY-OUT IS FOR  
AVAILABLE PROPOSES ONLY.  
FOR ENLARGED PLANS PLEASE  
REFER TO INDIVIDUAL UNIT  
LAY-OUTS

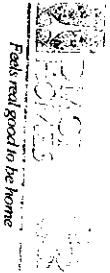
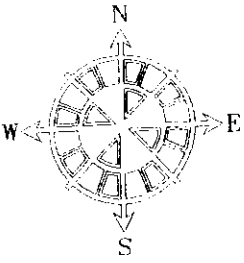


**SOUTH TOWER**  
**8th FLOOR PLAN**  
17 SEPTEMBER 2014

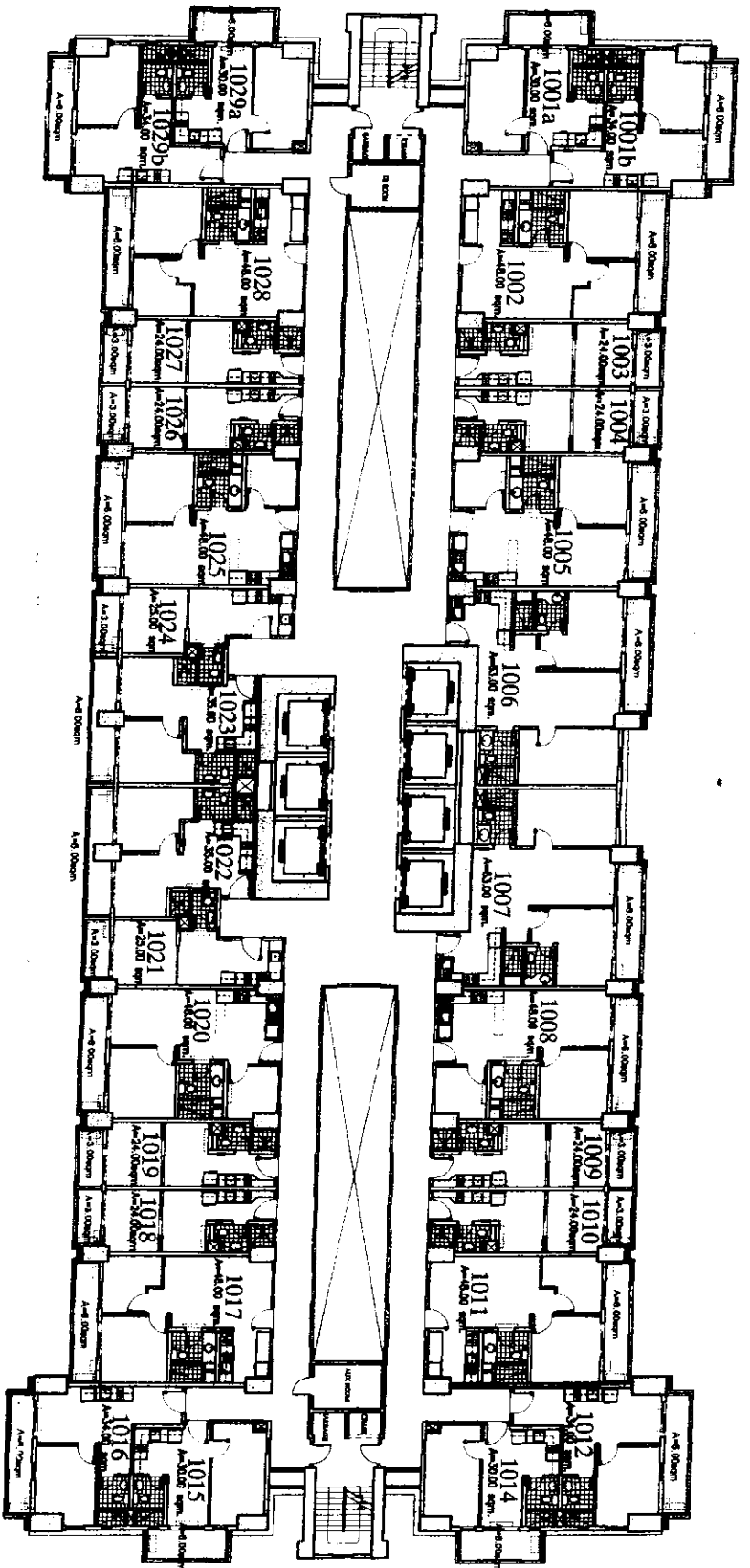


COL. NAME	REVISIONS
NOTED BY	
RMS	
GSA	

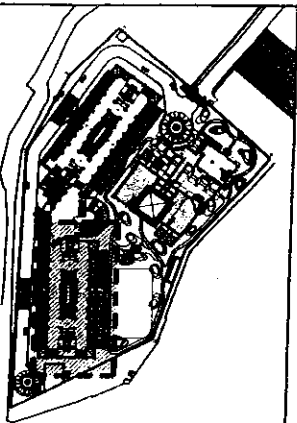
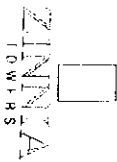




NOTE:  
LAY-OUT IS FOR  
AVAILABILITY PURPOSES ONLY.  
FOR ENLARGED PLANS, PLEASE  
REFER TO INDIVIDUAL UNIT  
LAY-OUTS



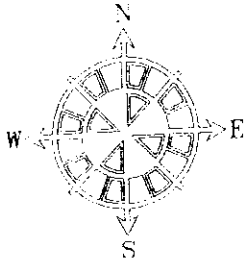
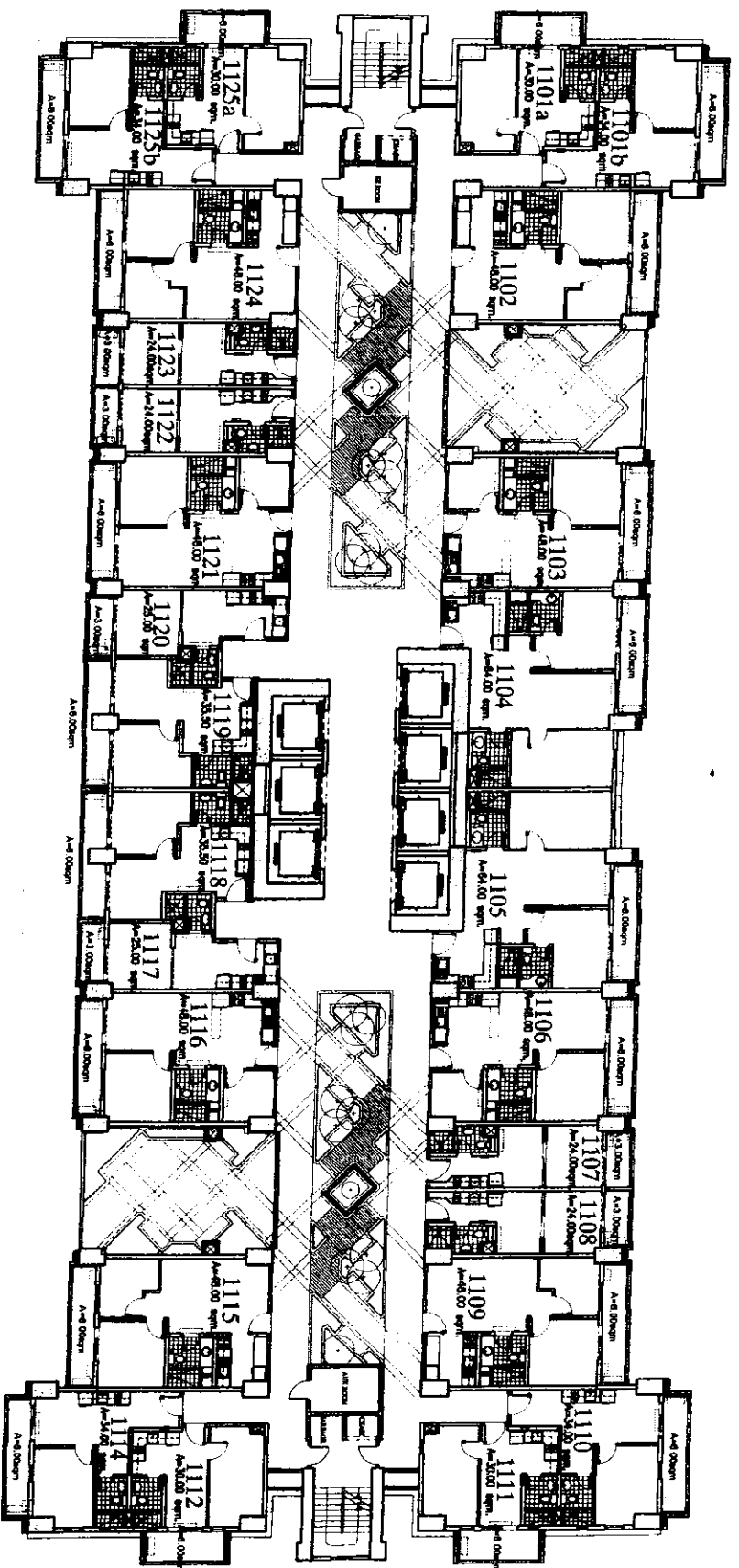
**SOUTH TOWER**  
**10th FLOOR PLAN**  
17 SEPTEMBER 2014



NO.	DATE	REVISIONS

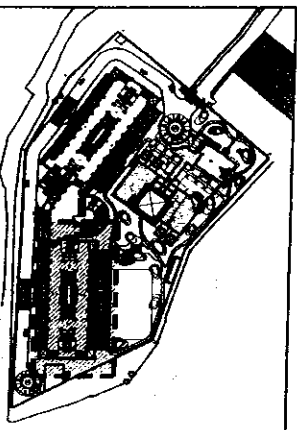
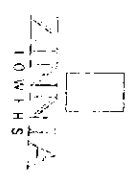
NOTED BY	RMS
CSA	<i>[Signature]</i>



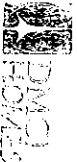
**ARMANDO**  
*Feels real, good to be home*

NOTE:  
 LAY-OUT IS FOR  
 AVAILABILITY PURPOSES ONLY.  
 FOR ENLARGED PLANS, PLEASE  
 REFER TO INDIVIDUAL UNIT  
 LAY-OUTS

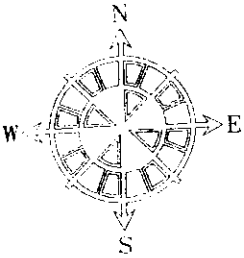
**SOUTH TOWER**  
**11th FLOOR PLAN**  
 17 SEPTEMBER 2014



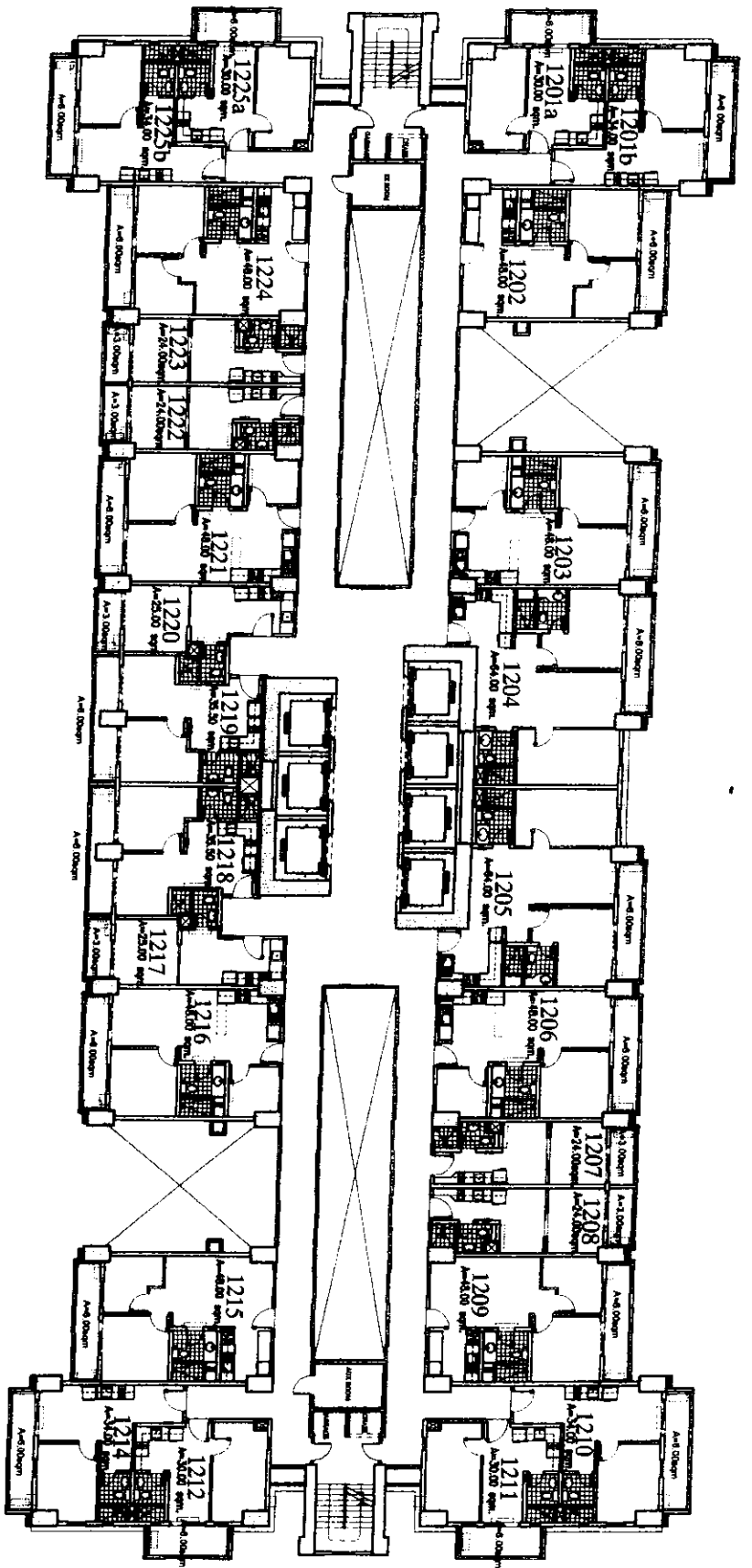
NO. DATE	REVISIONS
NOTED BY	
GSA	RMS
	<i>[Signature]</i>



Facts real Good to be Home

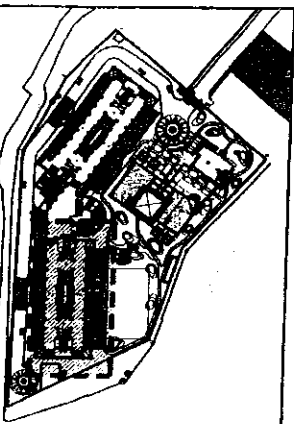


NOTE:  
LAY-OUT IS FOR  
AVAILABLE PURPOSES ONLY.  
FOR ENLARGED PLANS, PLEASE  
REFER TO INDIVIDUAL UNIT  
LAY-OUTS



ZINNINIA  
TOWERS

# SOUTH TOWER 12th FLOOR PLAN 17 SEPTEMBER 2014



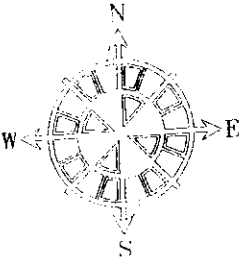
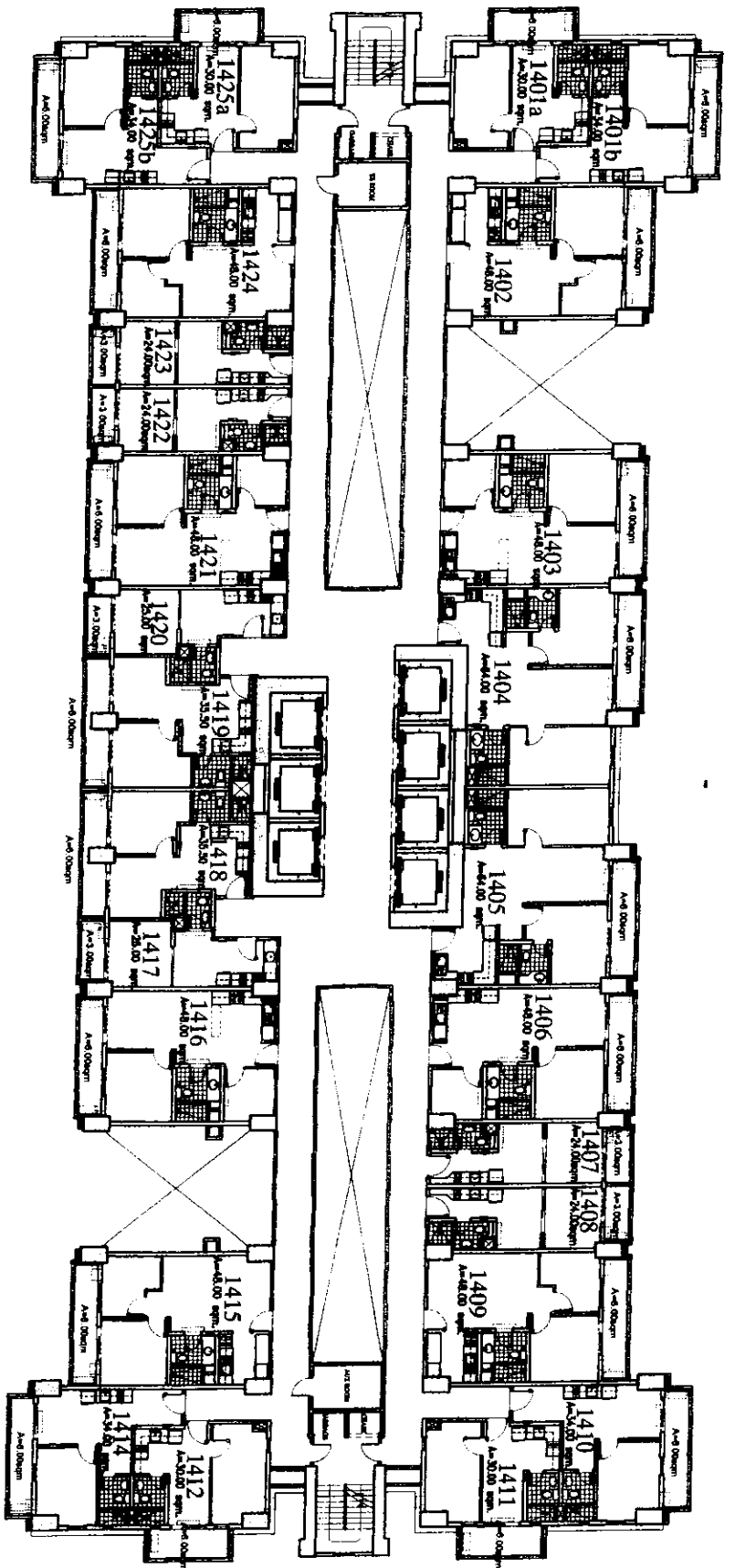
NO. DATE REVISIONS

NOTED BY

RMS

GSA

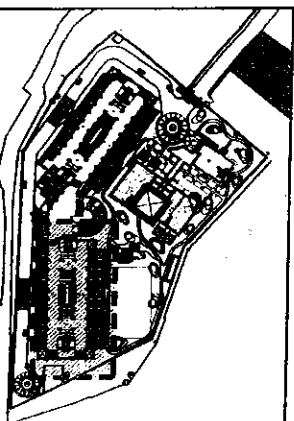
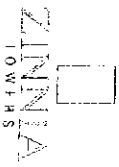
*[Signature]*



*Feels real good to be home*

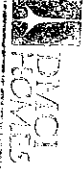
NOTE:  
LAY-OUT IS FOR  
AVAILABILITY PURPOSES ONLY.  
FOR ENLARGED PLANS PLEASE  
REFER TO INDIVIDUAL UNIT  
LAY-OUTS

**SOUTH TOWER**  
**14th FLOOR PLAN**  
17 SEPTEMBER 2014

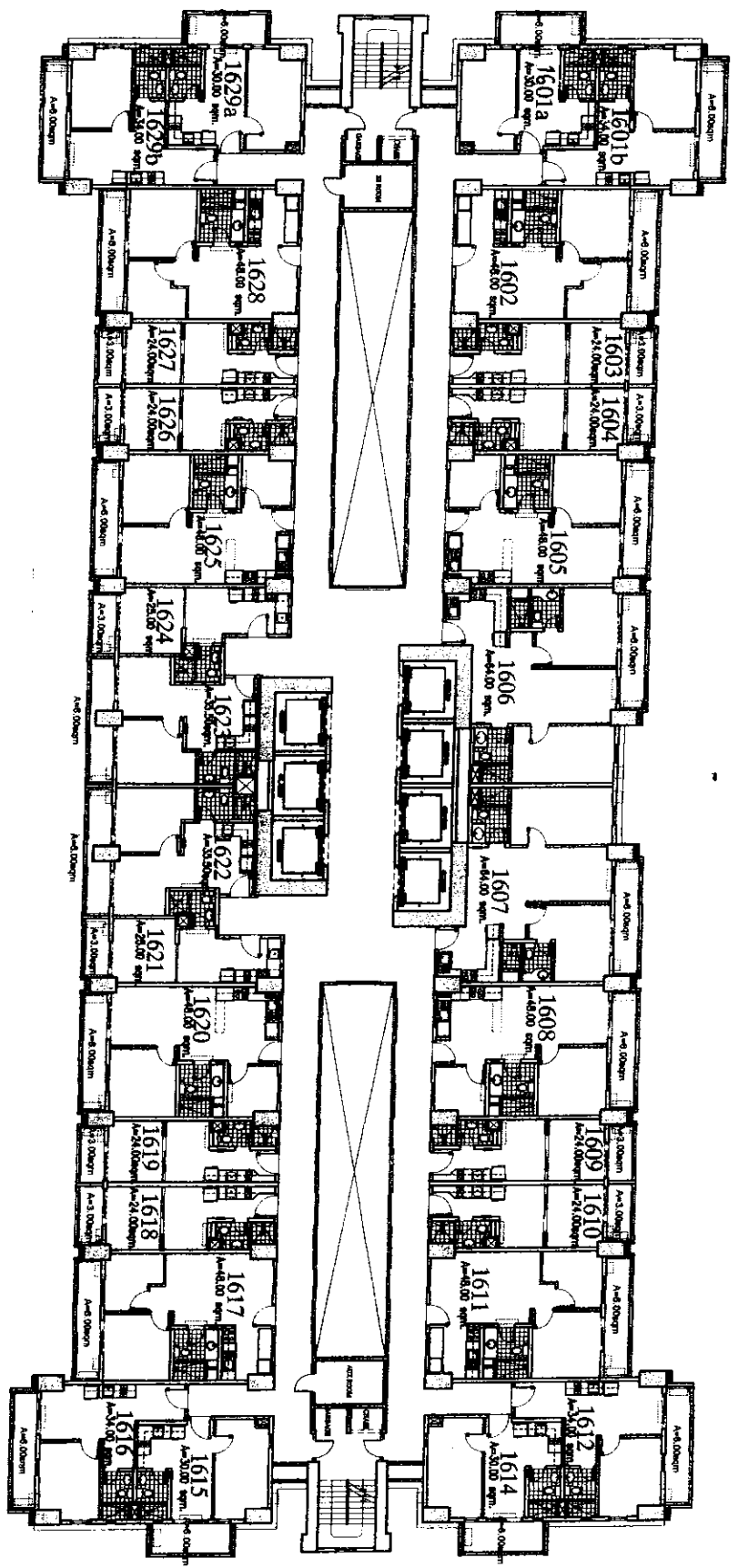
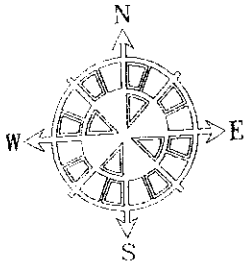


DATE	REVISIONS
NOTED BY	RMS
GSA	





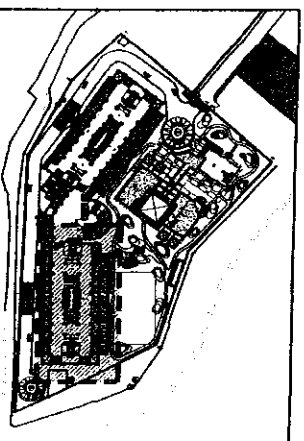
*Feels real. Good to be home.*



**NOTE**  
LAY-OUT IS FOR  
AVAILABILITY PURPOSES ONLY.  
FOR ENLARGED PLANS, PLEASE  
REFER TO INDIVIDUAL UNIT  
LAY-OUTS

**ZINNIA**  
TOWERS

**SOUTH TOWER**  
**16th FLOOR PLAN**  
17 SEPTEMBER 2014



NO.	DATE	REVISIONS

NOTED BY	RMS
GSA	<i>[Signature]</i>

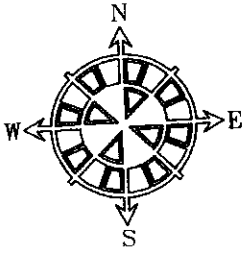
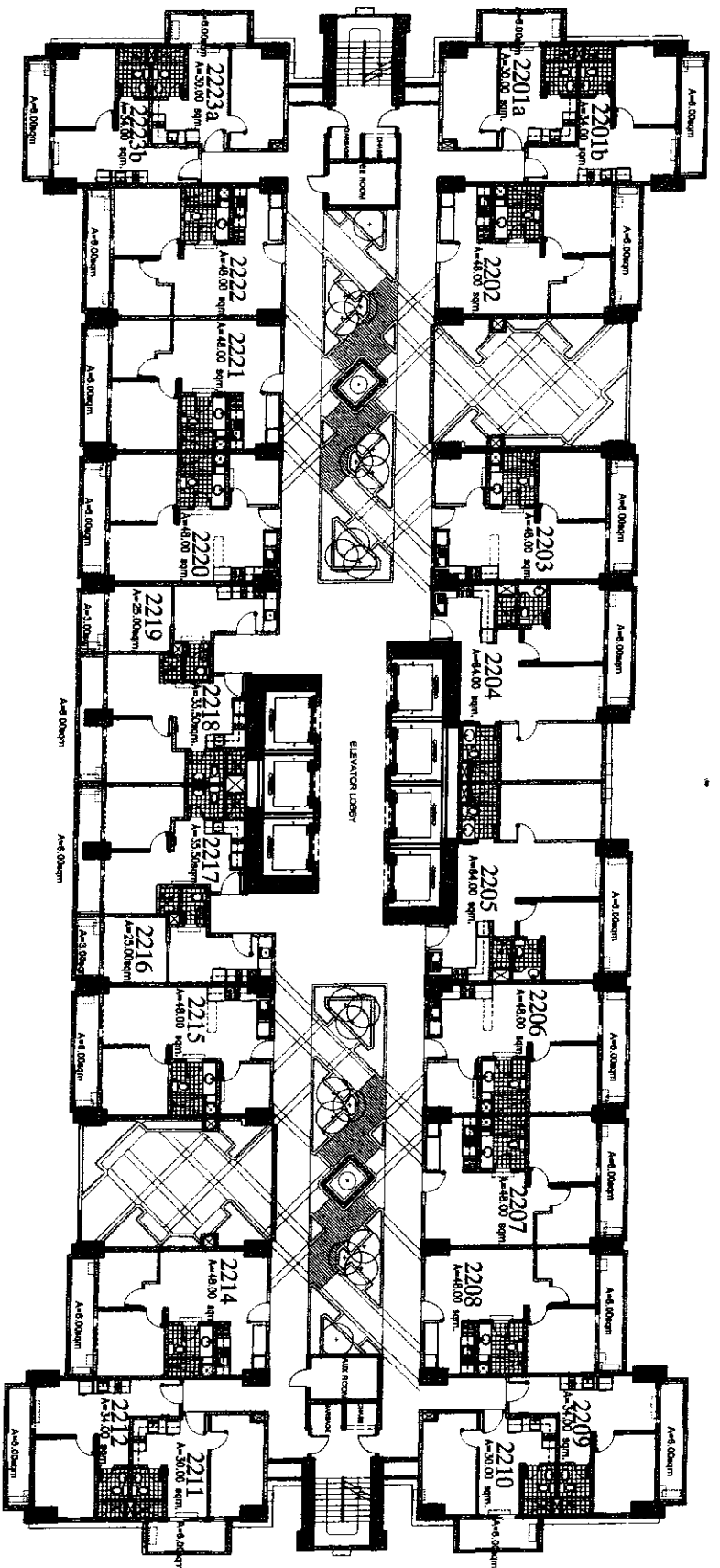












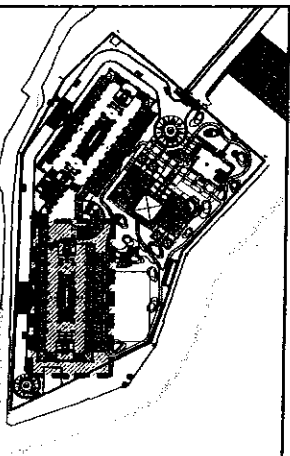
Trade real good to be home

NOTE:  
LAY-OUT IS FOR  
AVAILABILITY PURPOSES ONLY.  
REFER TO INDIVIDUAL UNIT  
LAY-OUTS

**SOUTH TOWER  
22nd FLOOR PLAN**

ZINNIA  
TOWERS

4000 WILSON BLVD



NO.	DATE	REVISIONS

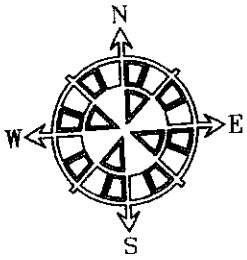
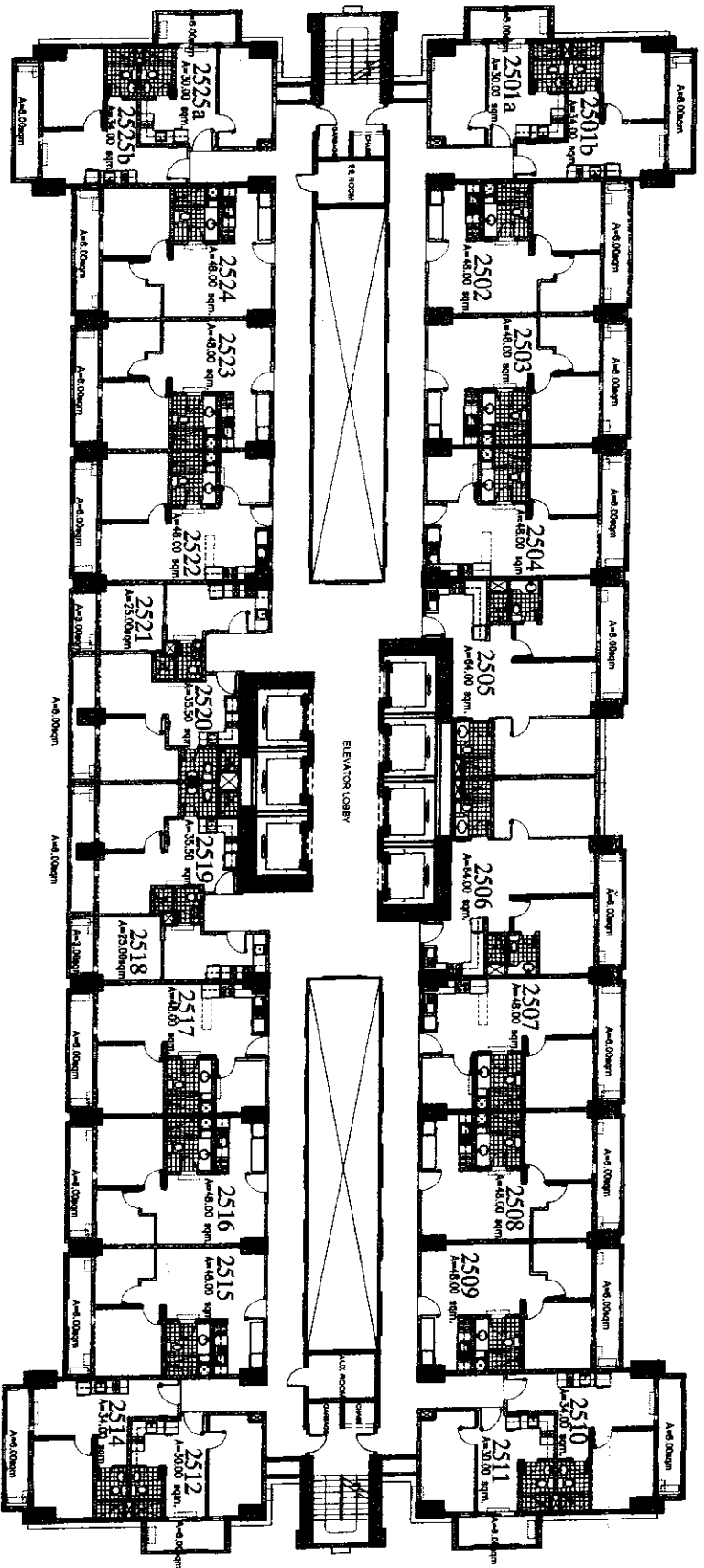
  

NOTED BY	RMS	AMC

h/k

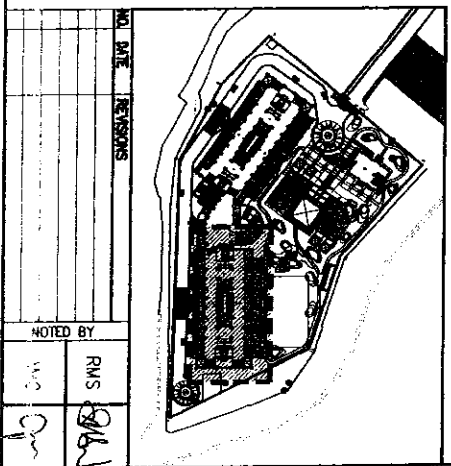






NOTE:  
LAY-OUT IS FOR  
AVAILABILITY PURPOSES ONLY.  
FOR ENLARGED PLANS, PLEASE  
REFER TO INDIVIDUAL UNIT  
LAY-OUTS

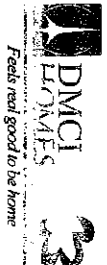
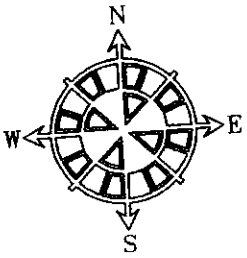
**SOUTH TOWER**  
**25th FLOOR PLAN**  
28 JUNE 2015



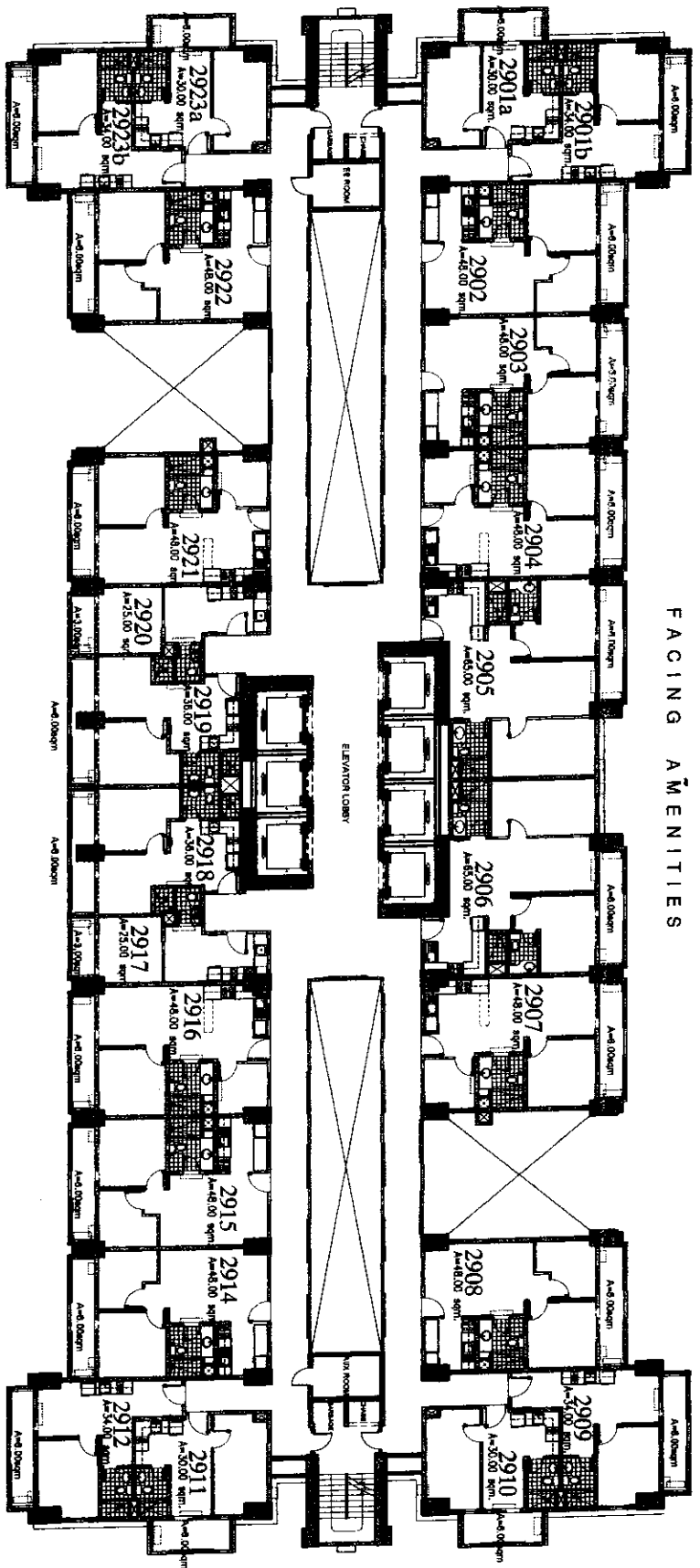








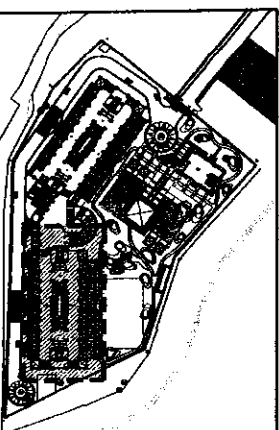
NOTE:  
LAY-OUT IS FOR  
AVAILABILITY PURPOSES ONLY.  
FOR ENLARGED PLANS, PLEASE  
REFER TO INDIVIDUAL UNIT  
LAY-OUTS



FACING DRIVEWAY

FACING AMENITIES

**ZINNIA TOWERS**  
**SOUTH TOWER**  
**29th FLOOR PLAN**  
25 JUNE 2015



NO.	DATE	REVISIONS

NOTED BY: **RMS**

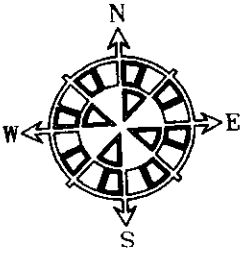








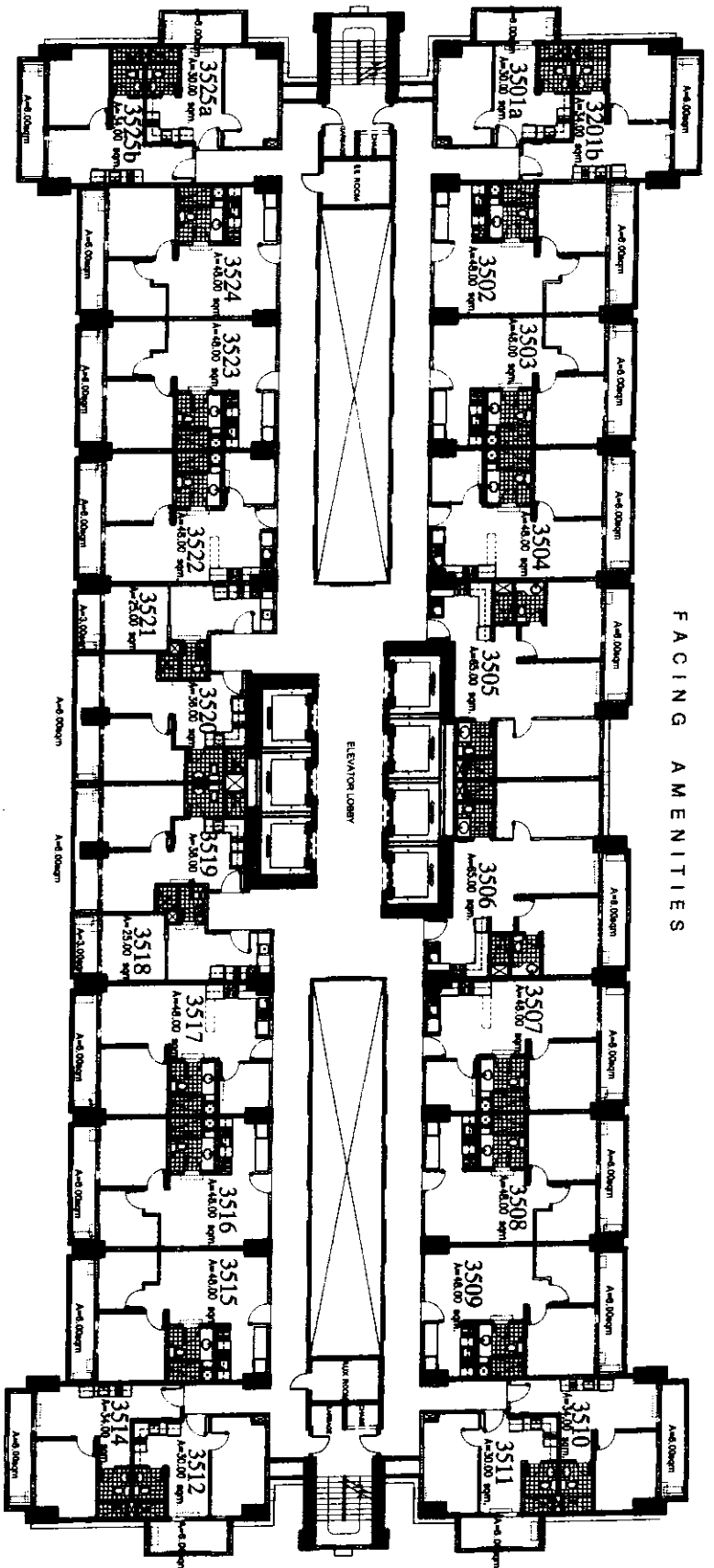




From your good to our name



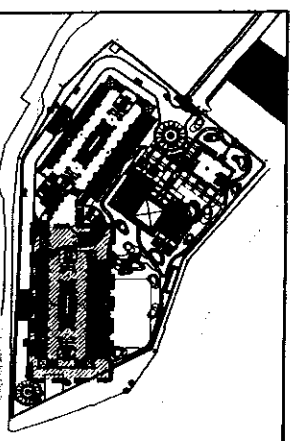
NOTE:  
LAY-OUT IS FOR  
AVAILABILITY PURPOSES ONLY.  
FOR ENLARGED PLANS, PLEASE  
REFER TO INDIVIDUAL UNIT  
LAY-OUTS



FACING AMENITIES

FACING DRIVEWAY

ZINNIA  
TOWERS  
SOUTH TOWER  
35th FLOOR PLAN  
26 JUNE 2015

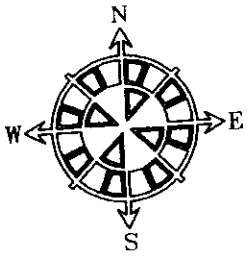


NO.	DATE	REVISIONS

NOTED BY: RMS





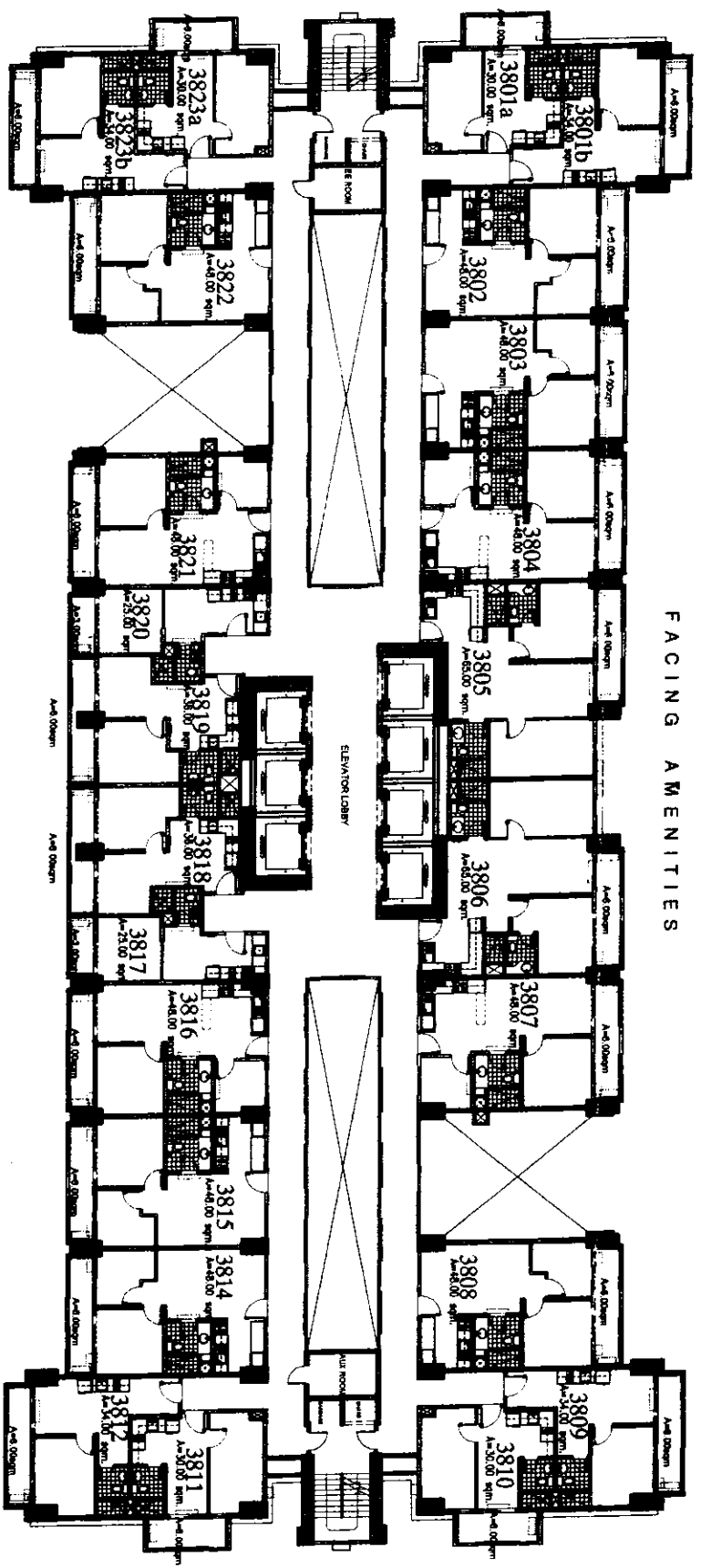


NOTE:  
 LAY-OUT IS FOR  
 AVAILABILITY PURPOSES ONLY.  
 FOR ENLARGED PLANS PLEASE  
 CONTACT SALES

**SOUTH TOWER  
 38th FLOOR PLAN**

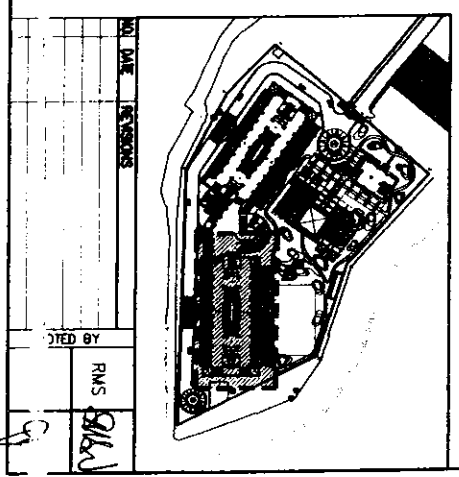


25 JUNE 2015

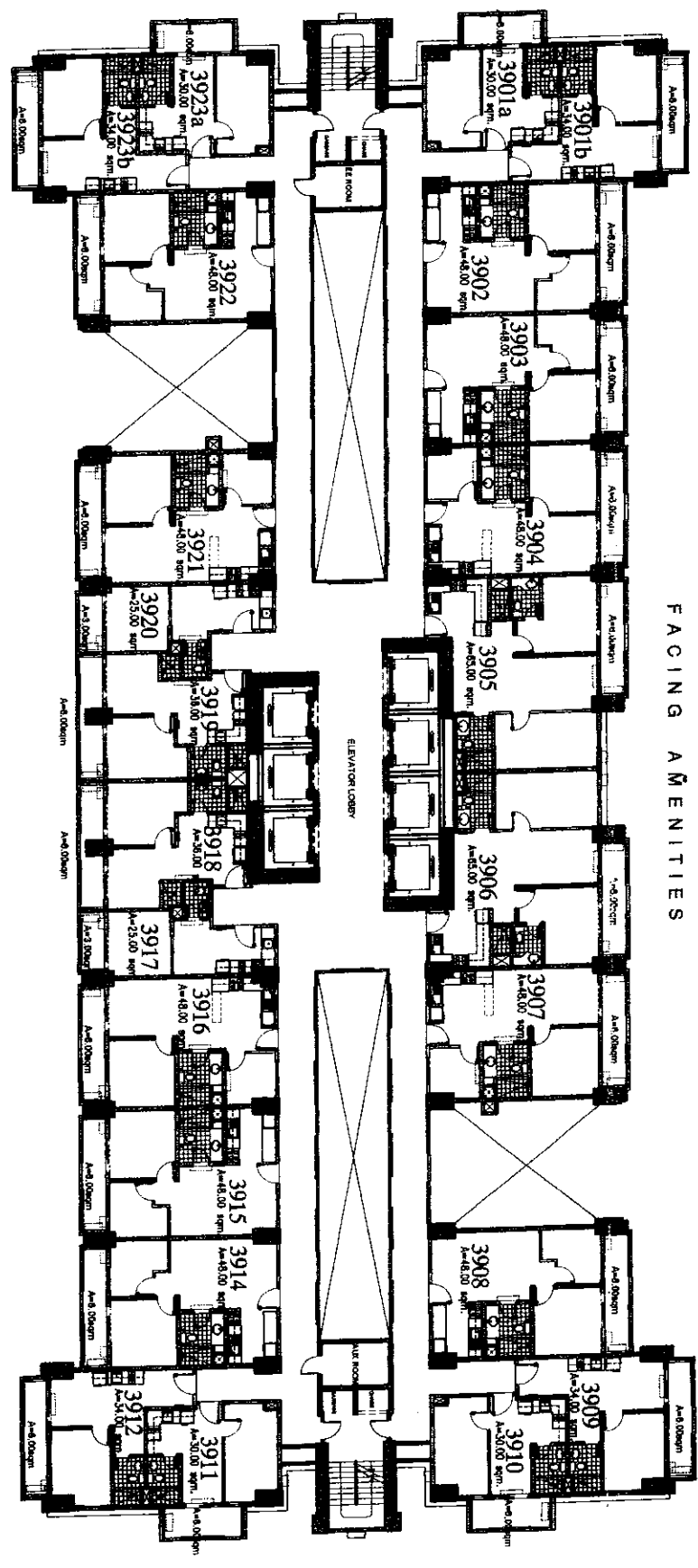


FACING AMENITIES

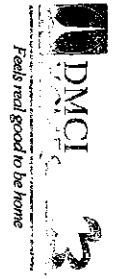
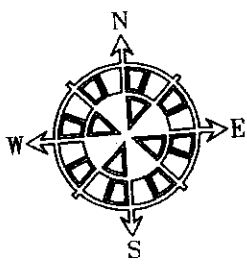
FACING DRIVEWAY



FACING AMENITIES



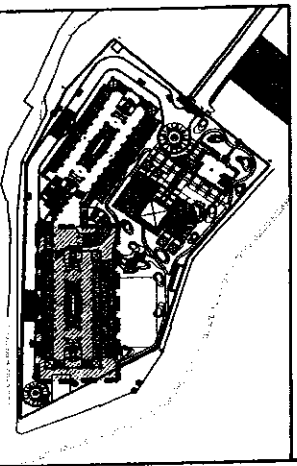
FACING DRIVEWAY



NOTE:  
LAY-OUT IS FOR  
AVAILABILITY PURPOSES ONLY.  
FOR THE LARGEST PLANS PLEASE  
REFER TO INDIVIDUAL UNIT  
LAY-OUTS

**ZINNIA  
TOWERS**  
**SOUTH TOWER**  
**39th FLOOR PLAN**

95 W. I-10 #2115



NO.	DATE	REVISIONS

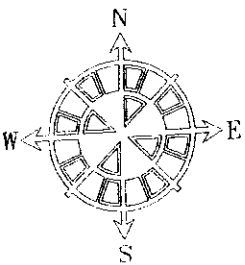
NOTED BY	RMS
AMC	<i>[Signature]</i>





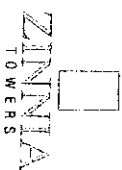


Direct Homes  
Finds real good to be home



NOTE:  
LAY-OUT IS FOR  
AVAILABILITY PURPOSES ONLY.  
FOR ENLARGED PLANS, PLEASE  
REFER TO INDIVIDUAL UNIT  
LAY-OUTS

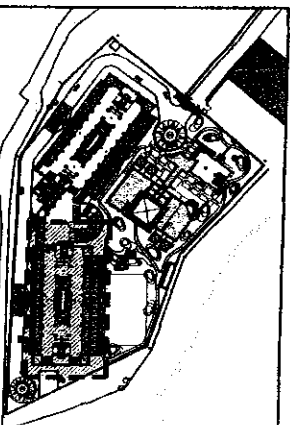
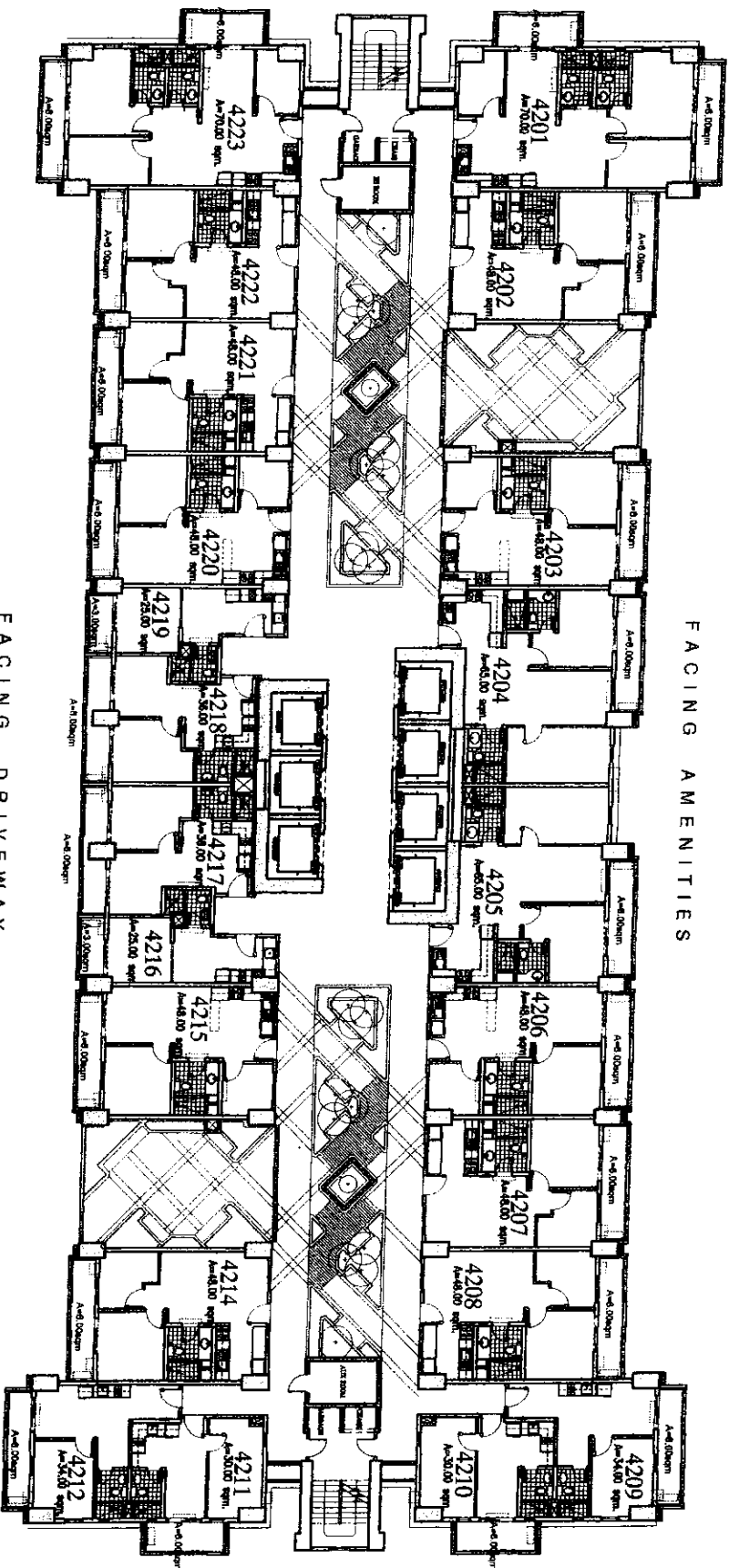
**SOUTH TOWER  
42nd FLOOR PLAN**



17 September 2014

FACING DRIVEWAY

FACING AMENITIES

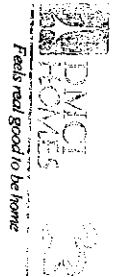
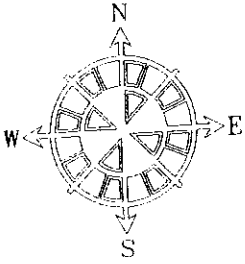
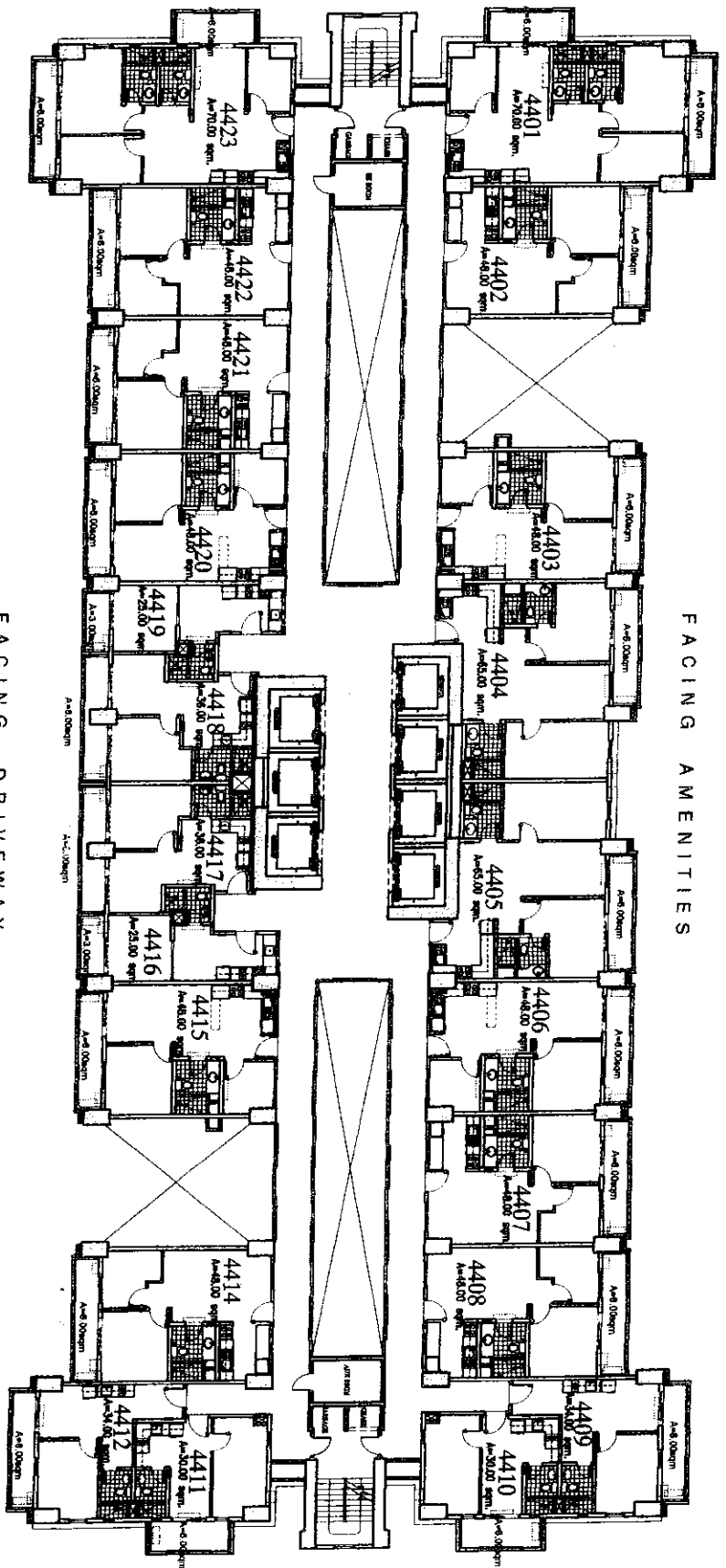


NO. DATE REVISIONS

NOTED BY  
RMS  
CSA

*[Signature]*



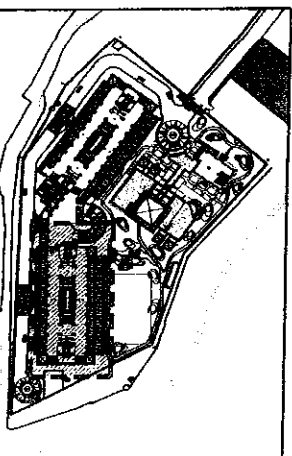


NOTE:  
LAY-OUT IS FOR  
AVAILABILITY PURPOSES ONLY.  
FOR ENLARGED PLANS, PLEASE  
REFER TO INDIVIDUAL UNIT  
LAY-OUTS

FACING DRIVEWAY

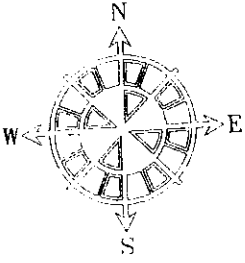
FACING AMENITIES

ZINNIA  
TOWERS  
SOUTH TOWER  
44th FLOOR PLAN  
17 September 2014



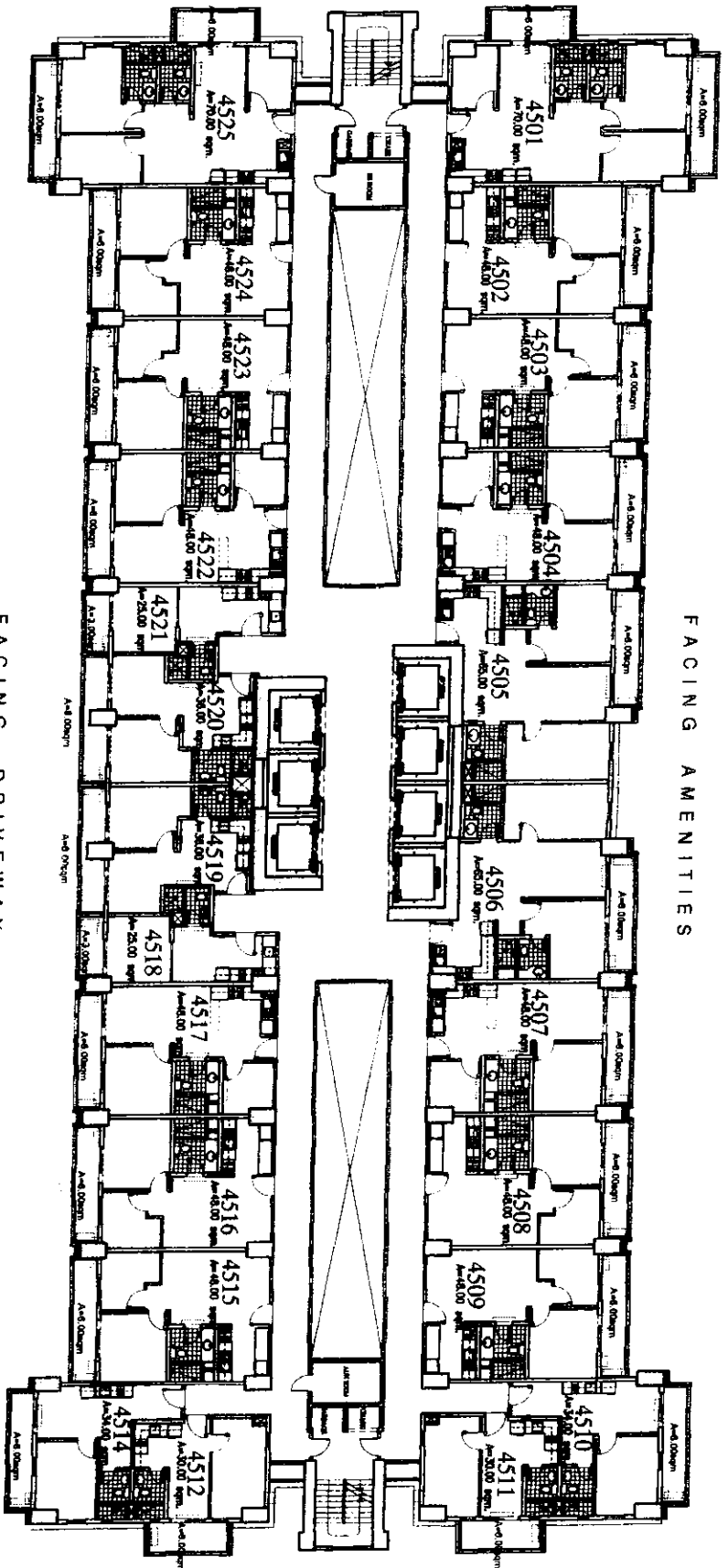
NO. DATE REVISIONS

NOTED BY  
RMS  
GSA



EMC CONSTRUCTION  
*Life's real good to be home*

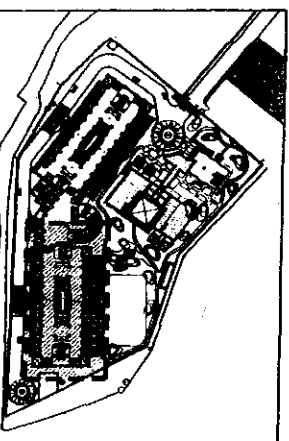
NOTE:  
 LAY-OUT IS FOR  
 AVAILABILITY PURPOSES ONLY.  
 FOR ENLARGED PLANS, PLEASE  
 REFER TO INDIVIDUAL UNIT  
 LAY-OUTS



FACING AMENITIES

FACING DRIVEWAY

ZINNIA  
 TOWERS  
 SOUTH TOWER  
 45th FLOOR PLAN  
 17 September 2014



NO DATE REVISIONS

NOTED BY  
 RMS  
 GSA

