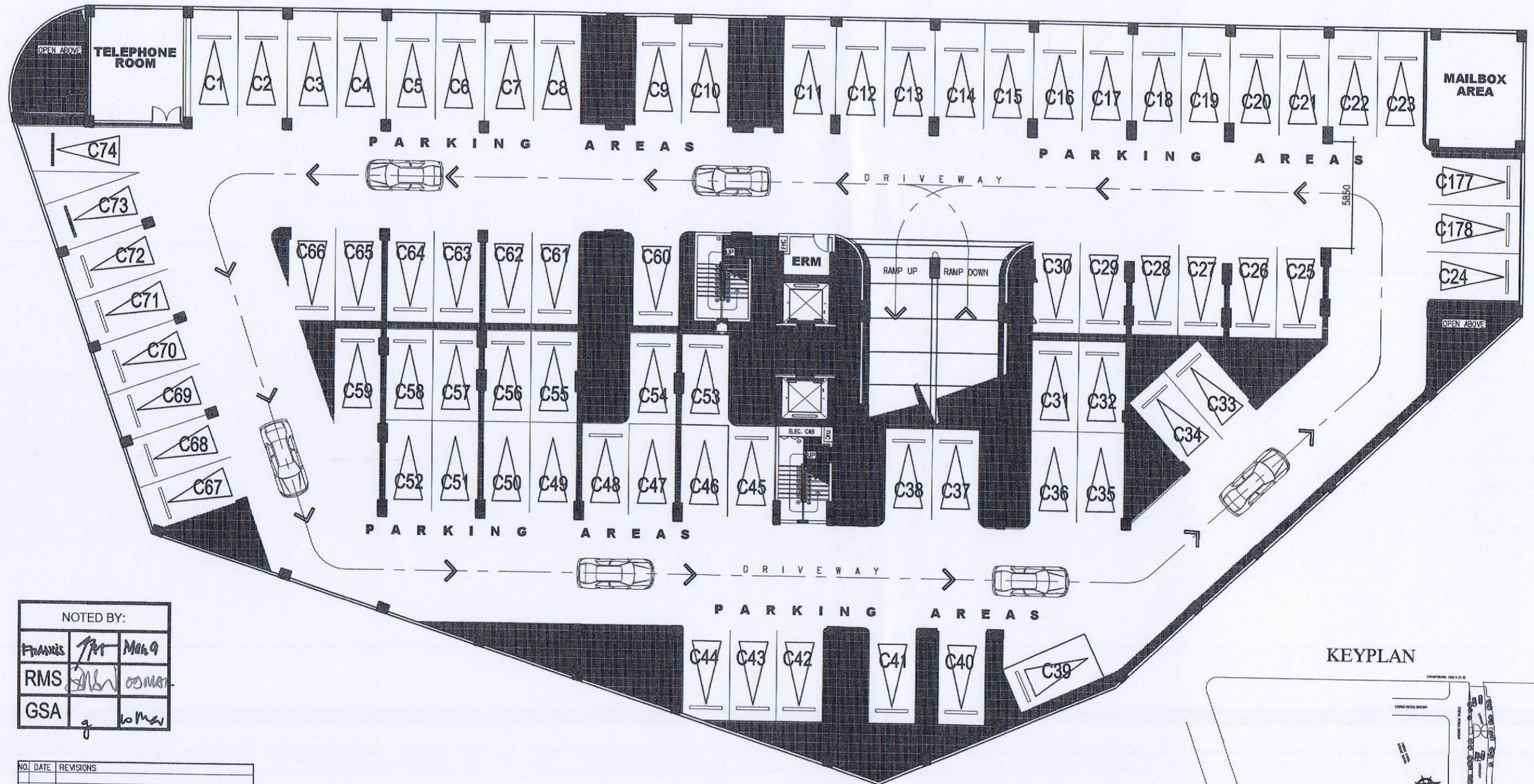


# CELESTA PODIUM PARKING LEVEL 1

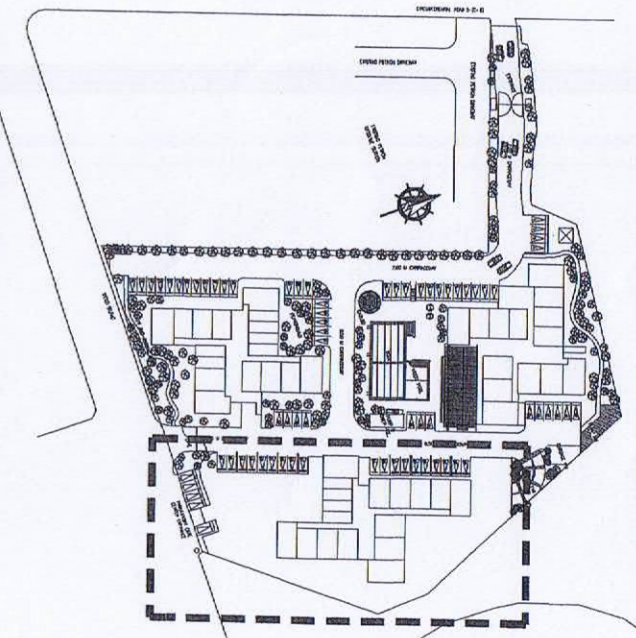


NOTED BY:

FRANIS	<i>[Signature]</i>	Mar 9
RMS	<i>[Signature]</i>	03 MAR
GSA	<i>[Signature]</i>	10 MAR

NO.	DATE	REVISIONS

## KEYPLAN

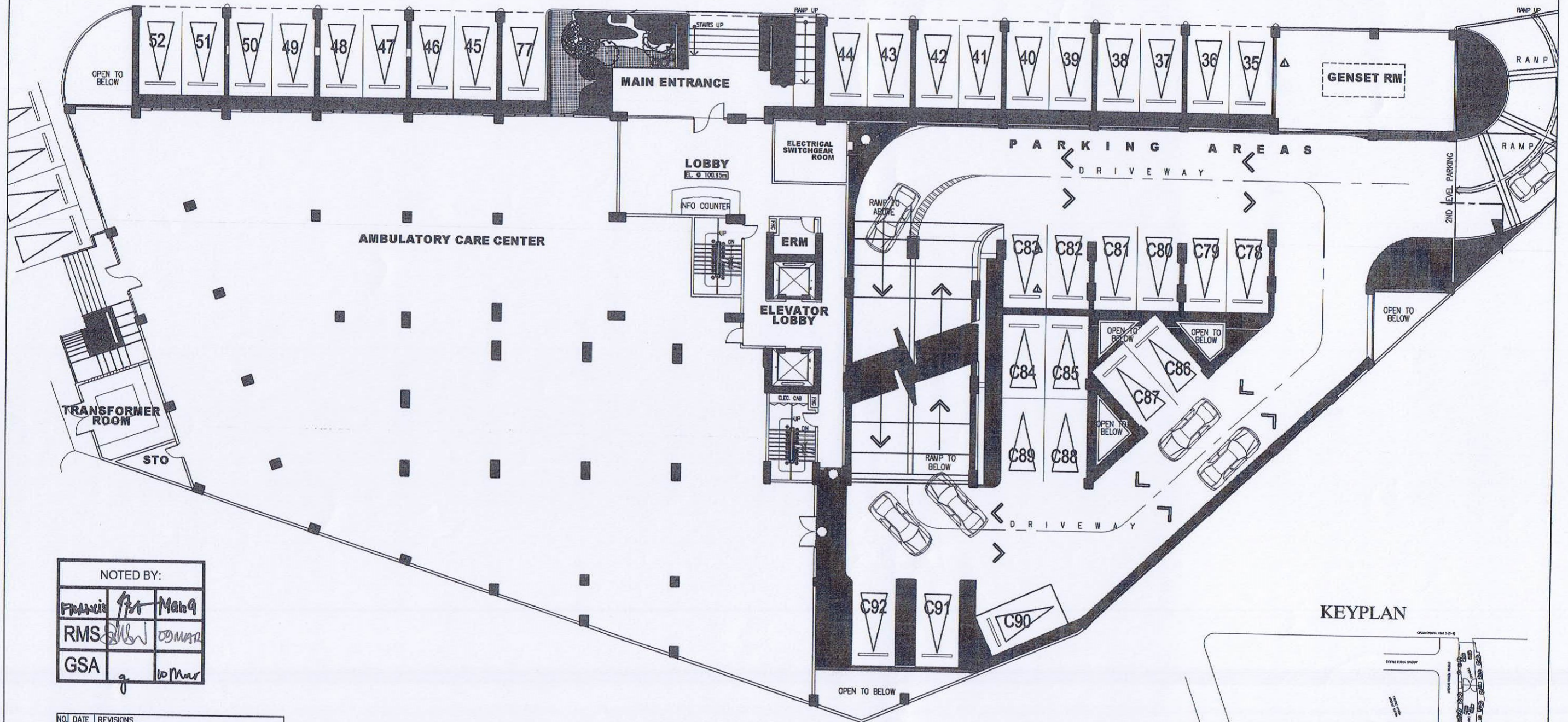


## CYPRESS TOWERS TOWER "C" ( CELESTA ) PARKING LEVEL 1 FLOOR PLAN

04 MAR 2015



# CELESTA PODIUM PARKING LEVEL 2



NOTED BY:

FRANIS	<i>[Signature]</i>	Mahaq
RMS	<i>[Signature]</i>	OMAR
GSA	<i>[Signature]</i>	W. MAR

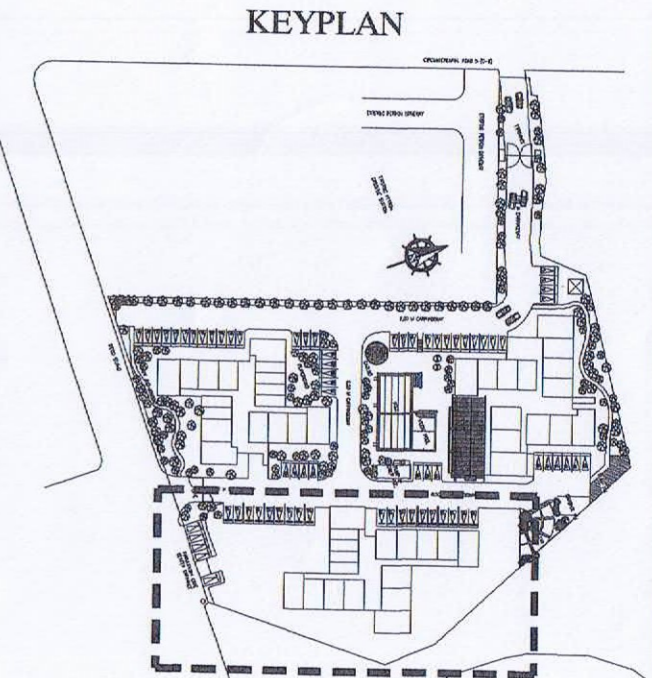
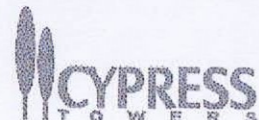
NO.	DATE	REVISIONS
1	03/04/15	GENSET PARTITION EXTENDED TO OCCUPY SLOT 34

## CYPRESS TOWERS

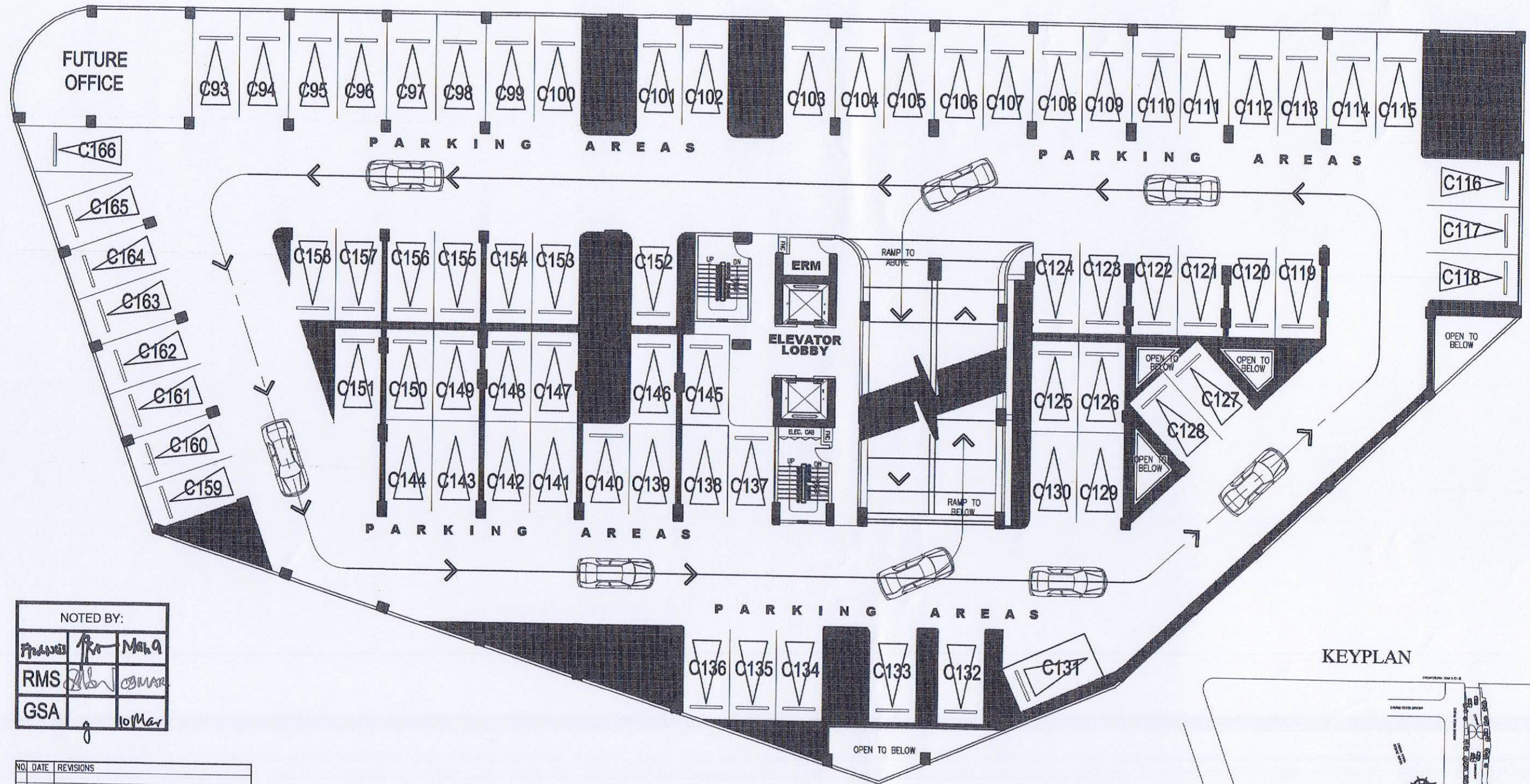
TOWER "C" (CELESTA)

PARKING LEVEL 2 FLOOR PLAN

04 MAR 2015



# CELESTA PODIUM PARKING LEVEL 3

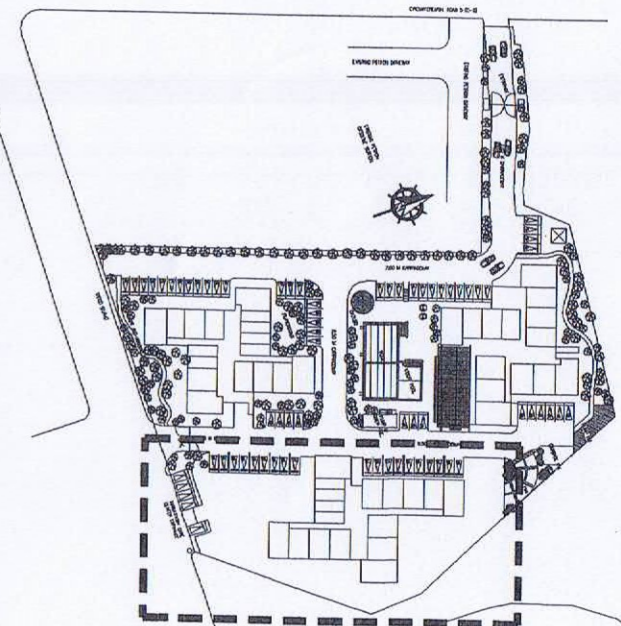


NOTED BY:

FRAMES	MAHA
RMS	OSMAR
GSA	10 Mar

NO.	DATE	REVISIONS

## KEYPLAN

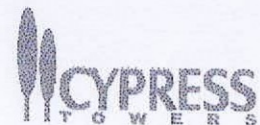
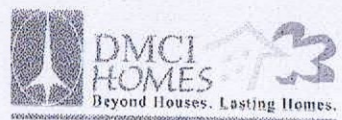


## CYPRESS TOWERS

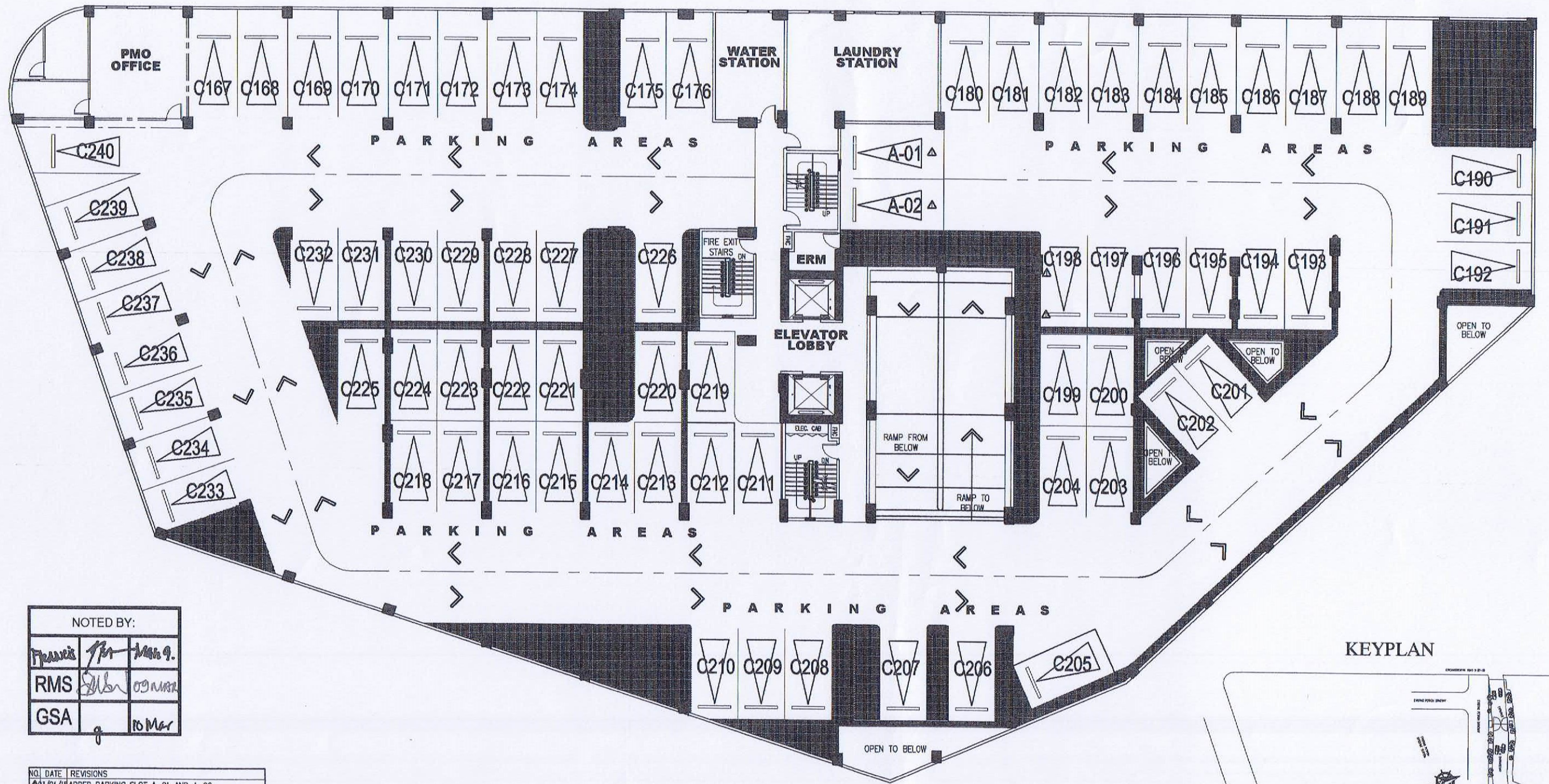
TOWER "C" (CELESTA)

PARKING LEVEL 3 FLOOR PLAN

04 MAR 2015



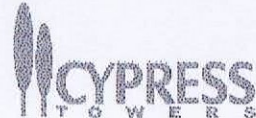
# CELESTA PODIUM PARKING LEVEL 4



NOTED BY:

Francis	for	Mar 9.
RMS	for	09 MAR
GSA		10 Mar

NO.	DATE	REVISIONS
1	03/04/15	ADDED PARKING SLOT A-01 AND A-02



## CYPRESS TOWERS TOWER "C" (CELESTA) PARKING LEVEL 4 FLOOR PLAN

04 MAR 2015

