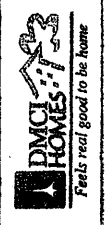


**KEYPLAN**

NO.	DATE	REVISIONS
1	10/11/11	ISSUE FOR PERMITS
2	11/15/11	ISSUE FOR PERMITS
3	12/15/11	ISSUE FOR PERMITS
4	01/15/12	ISSUE FOR PERMITS

**NOTED BY**

NAME	DATE
RMS	01/15/12
GSA	01/15/12



**LIST FOR POSSIBLE TANDEM UNITS:**  
 • M109 & M110

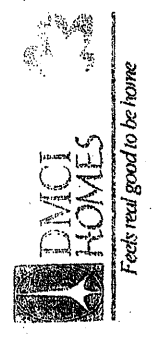
**NOTE:**  
 Standard company policy regarding request for tandem shall apply.

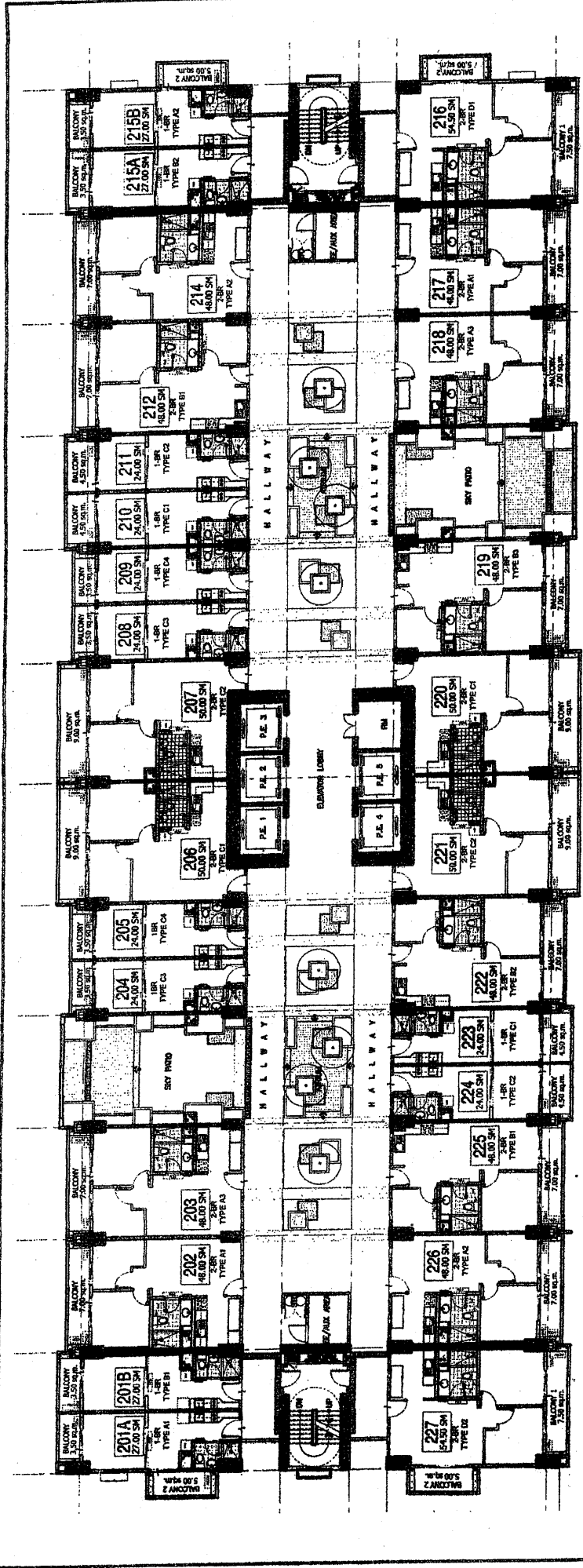
# VIERA RESIDENCES

**MEZZANINE FLOOR PLAN**

SEPTEMBER 2014

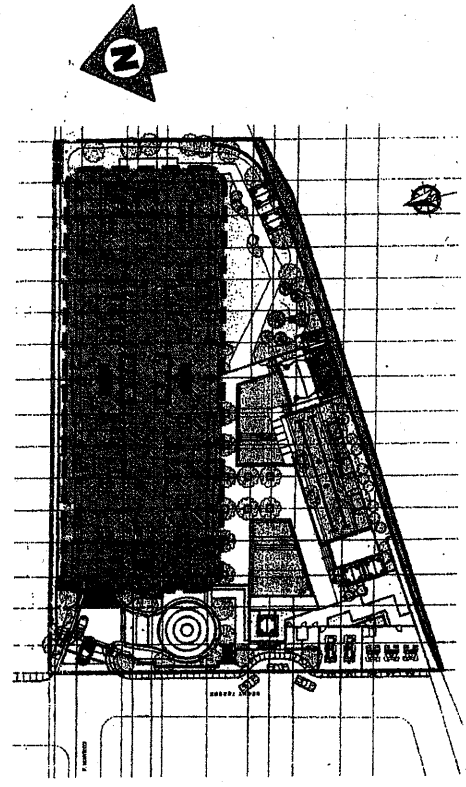
Memo Ref. # DESIGN-14-09-015





**LIST FOR POSSIBLE TANDEM UNITS:**  
 202 & 203  
 217 & 218  
 NOTE:  
 Standard company policy regarding request for tandem shall apply.

FACING AMENITIES

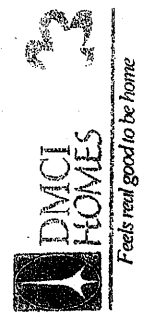


KEY PLAN

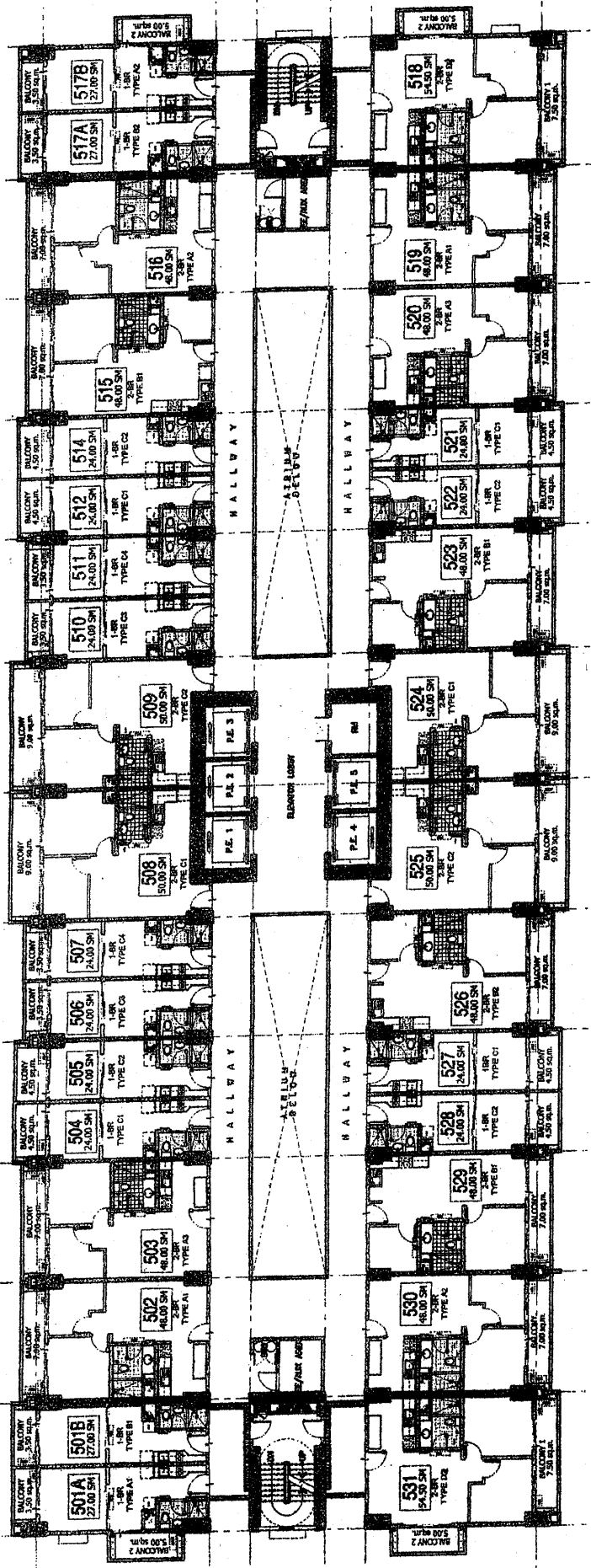
NO.	DATE	REVISIONS
1	08/20/14	ISSUED FOR PERMITS
2	08/20/14	REVISED PER COMMENTS
3	08/20/14	REVISED PER COMMENTS
4	08/20/14	REVISED PER COMMENTS
5	08/20/14	REVISED PER COMMENTS
6	08/20/14	REVISED PER COMMENTS
7	08/20/14	REVISED PER COMMENTS
8	08/20/14	REVISED PER COMMENTS
9	08/20/14	REVISED PER COMMENTS
10	08/20/14	REVISED PER COMMENTS
11	08/20/14	REVISED PER COMMENTS
12	08/20/14	REVISED PER COMMENTS
13	08/20/14	REVISED PER COMMENTS
14	08/20/14	REVISED PER COMMENTS
15	08/20/14	REVISED PER COMMENTS
16	08/20/14	REVISED PER COMMENTS
17	08/20/14	REVISED PER COMMENTS
18	08/20/14	REVISED PER COMMENTS
19	08/20/14	REVISED PER COMMENTS
20	08/20/14	REVISED PER COMMENTS
21	08/20/14	REVISED PER COMMENTS
22	08/20/14	REVISED PER COMMENTS
23	08/20/14	REVISED PER COMMENTS
24	08/20/14	REVISED PER COMMENTS
25	08/20/14	REVISED PER COMMENTS
26	08/20/14	REVISED PER COMMENTS
27	08/20/14	REVISED PER COMMENTS
28	08/20/14	REVISED PER COMMENTS
29	08/20/14	REVISED PER COMMENTS
30	08/20/14	REVISED PER COMMENTS
31	08/20/14	REVISED PER COMMENTS
32	08/20/14	REVISED PER COMMENTS
33	08/20/14	REVISED PER COMMENTS
34	08/20/14	REVISED PER COMMENTS
35	08/20/14	REVISED PER COMMENTS
36	08/20/14	REVISED PER COMMENTS
37	08/20/14	REVISED PER COMMENTS
38	08/20/14	REVISED PER COMMENTS
39	08/20/14	REVISED PER COMMENTS
40	08/20/14	REVISED PER COMMENTS
41	08/20/14	REVISED PER COMMENTS
42	08/20/14	REVISED PER COMMENTS
43	08/20/14	REVISED PER COMMENTS
44	08/20/14	REVISED PER COMMENTS
45	08/20/14	REVISED PER COMMENTS
46	08/20/14	REVISED PER COMMENTS
47	08/20/14	REVISED PER COMMENTS
48	08/20/14	REVISED PER COMMENTS
49	08/20/14	REVISED PER COMMENTS
50	08/20/14	REVISED PER COMMENTS
51	08/20/14	REVISED PER COMMENTS
52	08/20/14	REVISED PER COMMENTS
53	08/20/14	REVISED PER COMMENTS
54	08/20/14	REVISED PER COMMENTS
55	08/20/14	REVISED PER COMMENTS
56	08/20/14	REVISED PER COMMENTS
57	08/20/14	REVISED PER COMMENTS
58	08/20/14	REVISED PER COMMENTS
59	08/20/14	REVISED PER COMMENTS
60	08/20/14	REVISED PER COMMENTS
61	08/20/14	REVISED PER COMMENTS
62	08/20/14	REVISED PER COMMENTS
63	08/20/14	REVISED PER COMMENTS
64	08/20/14	REVISED PER COMMENTS
65	08/20/14	REVISED PER COMMENTS
66	08/20/14	REVISED PER COMMENTS
67	08/20/14	REVISED PER COMMENTS
68	08/20/14	REVISED PER COMMENTS
69	08/20/14	REVISED PER COMMENTS
70	08/20/14	REVISED PER COMMENTS
71	08/20/14	REVISED PER COMMENTS
72	08/20/14	REVISED PER COMMENTS
73	08/20/14	REVISED PER COMMENTS
74	08/20/14	REVISED PER COMMENTS
75	08/20/14	REVISED PER COMMENTS
76	08/20/14	REVISED PER COMMENTS
77	08/20/14	REVISED PER COMMENTS
78	08/20/14	REVISED PER COMMENTS
79	08/20/14	REVISED PER COMMENTS
80	08/20/14	REVISED PER COMMENTS
81	08/20/14	REVISED PER COMMENTS
82	08/20/14	REVISED PER COMMENTS
83	08/20/14	REVISED PER COMMENTS
84	08/20/14	REVISED PER COMMENTS
85	08/20/14	REVISED PER COMMENTS
86	08/20/14	REVISED PER COMMENTS
87	08/20/14	REVISED PER COMMENTS
88	08/20/14	REVISED PER COMMENTS
89	08/20/14	REVISED PER COMMENTS
90	08/20/14	REVISED PER COMMENTS
91	08/20/14	REVISED PER COMMENTS
92	08/20/14	REVISED PER COMMENTS
93	08/20/14	REVISED PER COMMENTS
94	08/20/14	REVISED PER COMMENTS
95	08/20/14	REVISED PER COMMENTS
96	08/20/14	REVISED PER COMMENTS
97	08/20/14	REVISED PER COMMENTS
98	08/20/14	REVISED PER COMMENTS
99	08/20/14	REVISED PER COMMENTS
100	08/20/14	REVISED PER COMMENTS

# VIERA RESIDENCES

**2ND FLOOR PLAN**  
**SEPTEMBER 2014**  
 Memo Ref. # DESIGN-14-09-015







- LIST FOR POSSIBLE TANDEM UNITS:**
- 502 & 503
  - 519 & 520
  - 602 & 603
  - 619 & 620
  - 1002 & 1003
  - 1602 & 1603
  - 1819 & 1820
  - 1102 & 1103
  - 1119 & 1121
  - 1702 & 1703
  - 1719 & 1720
  - 2102 & 2103
  - 2119 & 2120
  - 2202 & 2203
  - 2219 & 2220

**NOTE:**  
Standard company policy regarding request for tandem shall apply.

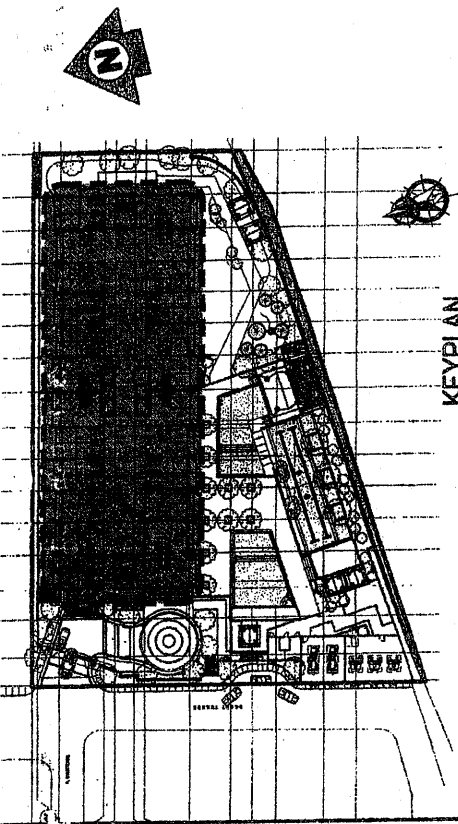


# VIERA RESIDENCES

TYP. 5TH-6TH, 10TH-11TH, 16TH-17TH &  
21ST-22ND FLOOR PLAN

SEPTEMBER 2014

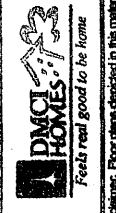
Memo Ref. # DESIGN-14-09-015



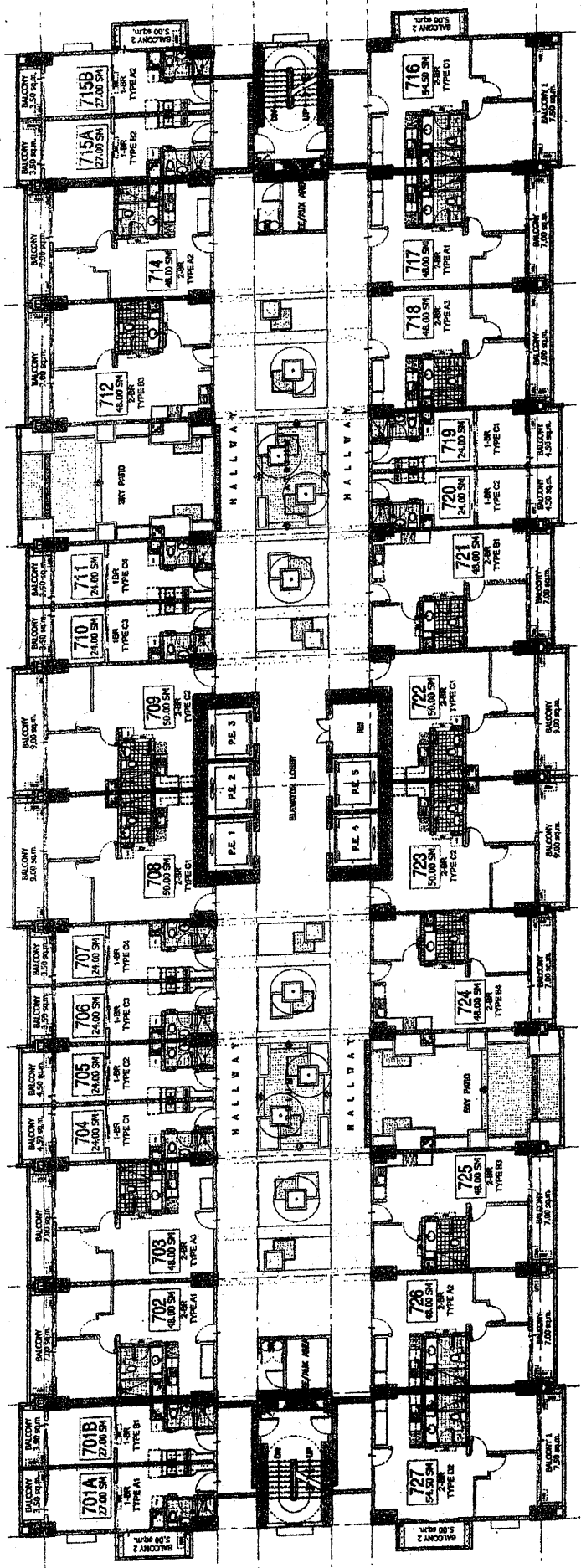
KEYPLAN

NO.	DATE	REVISIONS
1	JANUARY	FINAL (SCALE 1/8"=1'-0")
2	FEBRUARY	CONSTRUCTION OF UNIT AND PER STANDARD 5-A (SCALE 1/8"=1'-0")
3	MARCH	REVISIONS TO UNIT AND PER STANDARD 5-A (SCALE 1/8"=1'-0")
4	APRIL	REVISIONS TO UNIT AND PER STANDARD 5-A (SCALE 1/8"=1'-0")
5	MAY	REVISIONS TO UNIT AND PER STANDARD 5-A (SCALE 1/8"=1'-0")
6	JUNE	REVISIONS TO UNIT AND PER STANDARD 5-A (SCALE 1/8"=1'-0")
7	JULY	REVISIONS TO UNIT AND PER STANDARD 5-A (SCALE 1/8"=1'-0")
8	AUGUST	REVISIONS TO UNIT AND PER STANDARD 5-A (SCALE 1/8"=1'-0")
9	SEPTEMBER	REVISIONS TO UNIT AND PER STANDARD 5-A (SCALE 1/8"=1'-0")
10	OCTOBER	REVISIONS TO UNIT AND PER STANDARD 5-A (SCALE 1/8"=1'-0")
11	NOVEMBER	REVISIONS TO UNIT AND PER STANDARD 5-A (SCALE 1/8"=1'-0")
12	DECEMBER	REVISIONS TO UNIT AND PER STANDARD 5-A (SCALE 1/8"=1'-0")

NOTED BY: **PLANS ACT 01-1**  
RMS **RMS** JAZZ  
GSA **GSA** 10/13



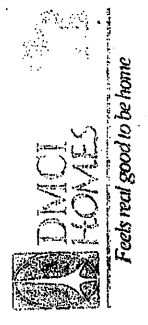
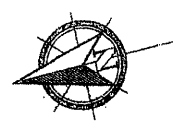
Disclaimer: Floor plans disclosed in this material are for informational purposes only and should not be relied upon as the actual floor plan.



**LIST FOR POSSIBLE TANDEN UNITS:**

- 702 & 703
- 717 & 718
- 1802 & 1803
- 1817 & 1818

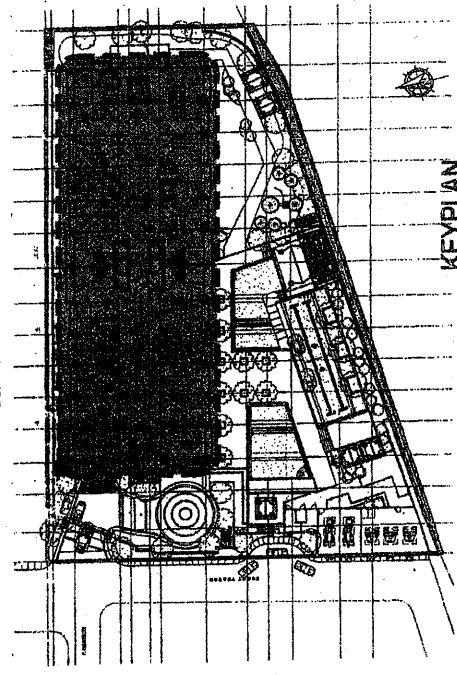
NOTE:  
Standard company policy regarding request for tandem shall apply.



# VIERA RESIDENCES

**TYP. 7TH & 18TH FLOOR PLAN**  
**SEPTEMBER 2014**  
 Memo Ref. # DESIGN-14-09-018

FACING AMENITIES



KEYPLAN

NO.	DATE	REVISIONS	BY	CHKD.
1	09/11/14	ISSUED FOR PERMITS	TRAVIS	TRAVIS
2	09/11/14	ISSUED FOR PERMITS	TRAVIS	TRAVIS
3	09/11/14	ISSUED FOR PERMITS	TRAVIS	TRAVIS
4	09/11/14	ISSUED FOR PERMITS	TRAVIS	TRAVIS

NOTED BY: TRAVIS

DATE: 09/11/14

SCALE: 1/8" = 1'-0"

PROJECT: VIERA RESIDENCES

DESIGNER: DMCI HOMES

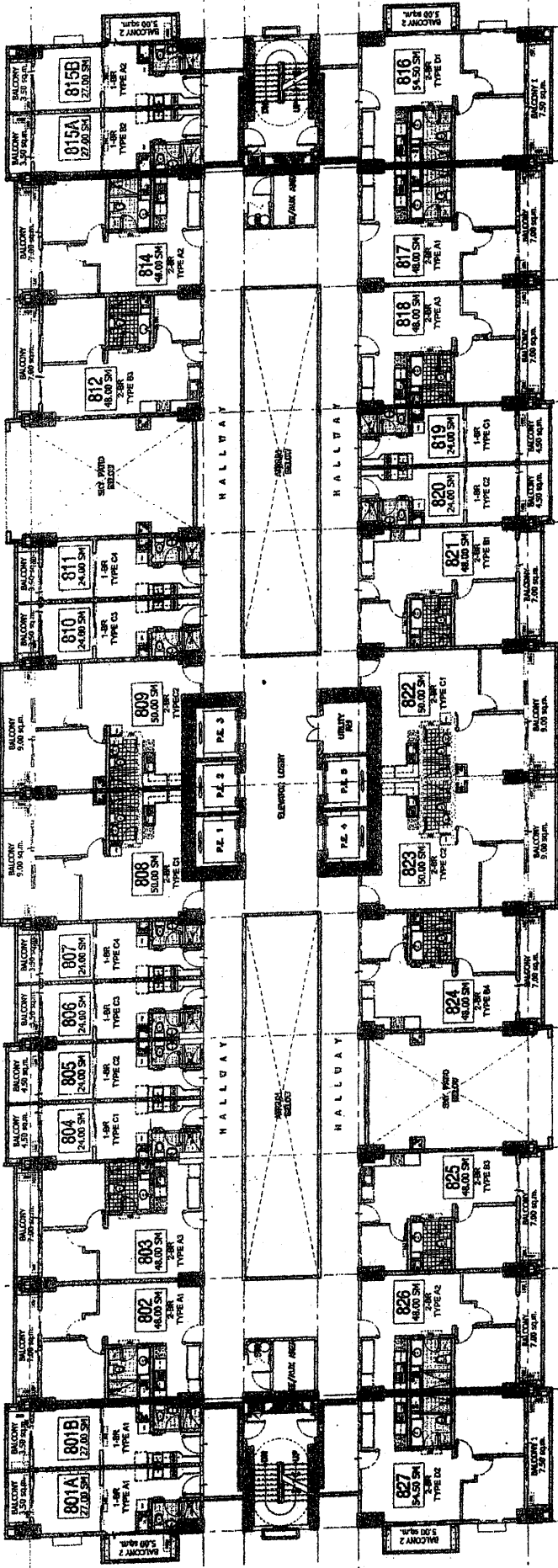
DATE: 09/11/14

SCALE: 1/8" = 1'-0"

PROJECT: VIERA RESIDENCES

DESIGNER: DMCI HOMES

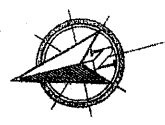




- LIST FOR POSSIBLE TANDEM UNITS:**
- 802 & 803
  - 1802 & 1803
  - 817 & 818
  - 1817 & 1818
  - 802 & 803
  - 2002 & 2003
  - 817 & 818
  - 2017 & 2018

**NOTE:**  
Standard company policy regarding request for tandem shall apply.

FACING ASBESTOS

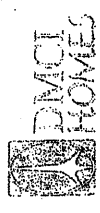


# VIERA RESIDENCES

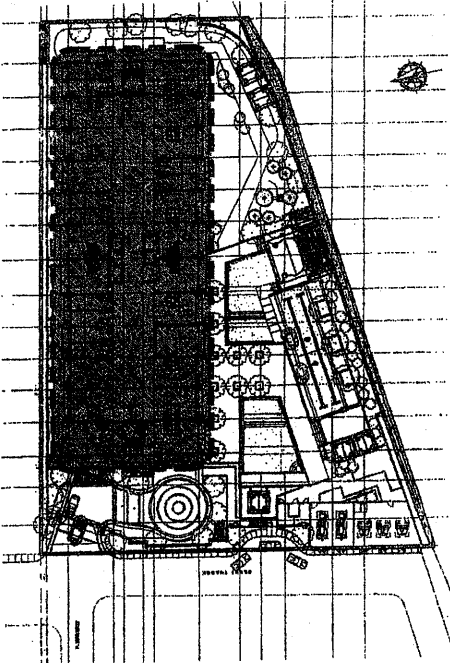
TYP. 8TH-9TH, 19TH-20TH FLOOR PLAN

SEPTEMBER 2014

Memo Ref. # DESIGN-14-09-015



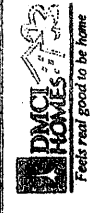
Feels real good to be home



KEY PLAN

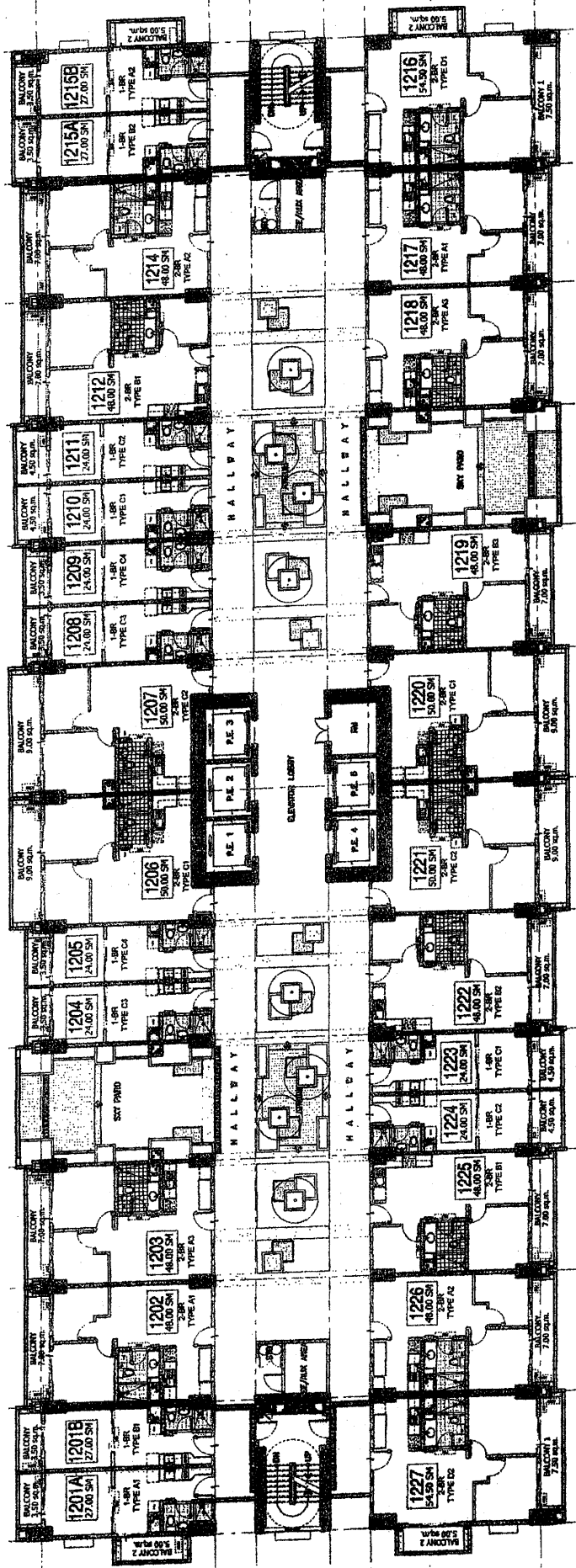
DATE	REVISIONS
11/14/14	FRANK A. 0014
11/14/14	RMS 0014
11/14/14	DOY 0014
11/14/14	GSA 0014
11/14/14	LD 0014

NO. DATE	REVISIONS
1	ISSUED
2	REVISED
3	REVISED
4	REVISED
5	REVISED
6	REVISED
7	REVISED
8	REVISED
9	REVISED
10	REVISED



Feels real good to be home

DRAWN & CHECKED BY: [unintelligible]



**LIST FOR POSSIBLE TANDEN UNITS:**

- 1202 & 1203
- 1217 & 1218

NOTE: Standard company policy regarding request for tandem shall apply.

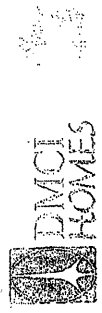
1202&1203, 1217&1218

# VIERA RESIDENCES

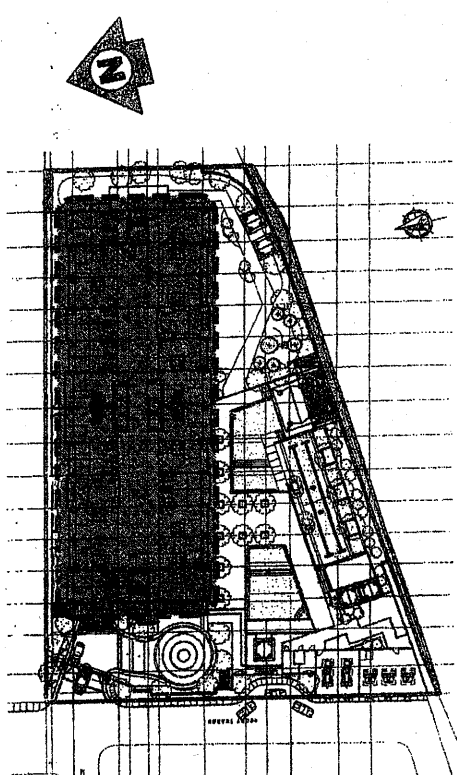
TYP. 12TH FLOOR PLAN

SEPTEMBER 2014

Memo Ref. # DESIGN-14-09-015



AVAILABLE UNTIL 11/1/14

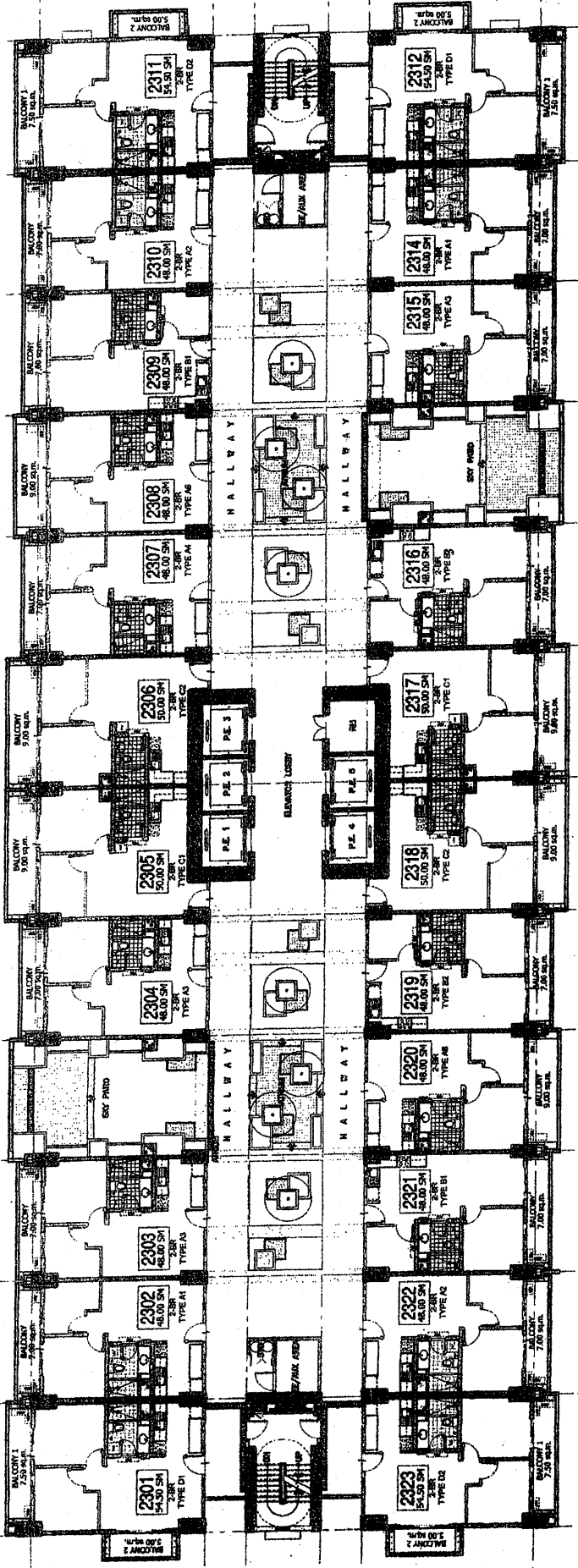


**KEY PLAN**

NOTED BY:	DATE:
RMS	10/14
GSA	

1. APPROVAL OF UNIT AND FIN. STUDY TO ARCHITECT	
2. APPROVAL OF UNIT AND FIN. STUDY TO ENGINEER	
3. APPROVAL OF UNIT AND FIN. STUDY TO CONTRACTOR	
4. APPROVAL OF UNIT AND FIN. STUDY TO VENDOR	
5. APPROVAL OF UNIT AND FIN. STUDY TO OTHER	

Demolition: Prior views obtained in the model are for demonstration purposes only and should not be relied upon as final product plans.

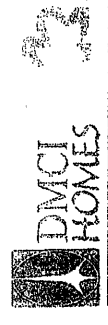


**LIST FOR POSSIBLE TANDEN UNITS:**  
 • 2302 & 2303  
 • 2314 & 2315

**NOTE:**  
 Standard company policy regarding request for tandem shall apply.

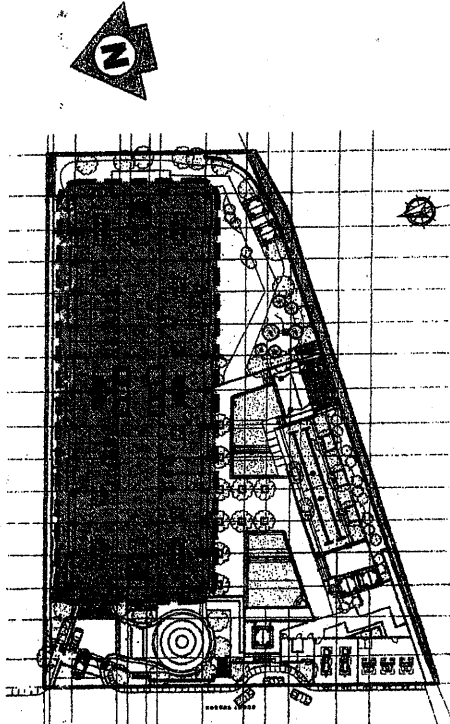
# VIERA RESIDENCES

TYP. 23RD FLOOR PLAN  
 SEPTEMBER 2014  
 Memo Ref. # DESIGN-14-09-015



ALTAH A UNIT PLAN

FACING AMENITIES



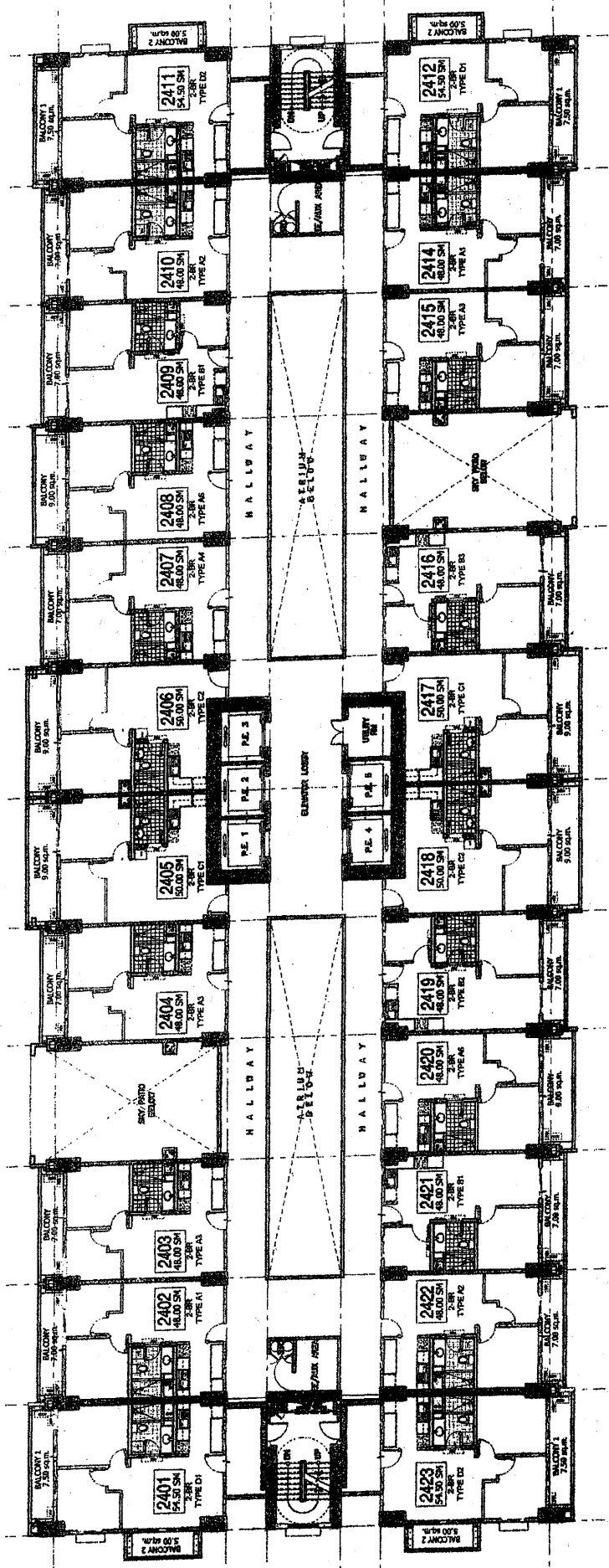
KEY PLAN

NO.	DATE	REVISIONS
1	JANUARY	PROJECT ISSUE CORRECTED IN
2	FEBRUARY	CONSTRUCTION OF UNIT 2301, 2302, 2303, 2304, 2305, 2306, 2307, 2308, 2309, 2310, 2311, 2312, 2313, 2314, 2315, 2316, 2317, 2318, 2319, 2320, 2321, 2322, 2323
3	MARCH	REVISIONS TO UNIT 2301, 2302, 2303, 2304, 2305, 2306, 2307, 2308, 2309, 2310, 2311, 2312, 2313, 2314, 2315, 2316, 2317, 2318, 2319, 2320, 2321, 2322, 2323
4	APRIL	REVISIONS TO UNIT 2301, 2302, 2303, 2304, 2305, 2306, 2307, 2308, 2309, 2310, 2311, 2312, 2313, 2314, 2315, 2316, 2317, 2318, 2319, 2320, 2321, 2322, 2323
5	MAY	REVISIONS TO UNIT 2301, 2302, 2303, 2304, 2305, 2306, 2307, 2308, 2309, 2310, 2311, 2312, 2313, 2314, 2315, 2316, 2317, 2318, 2319, 2320, 2321, 2322, 2323
6	JUNE	REVISIONS TO UNIT 2301, 2302, 2303, 2304, 2305, 2306, 2307, 2308, 2309, 2310, 2311, 2312, 2313, 2314, 2315, 2316, 2317, 2318, 2319, 2320, 2321, 2322, 2323
7	JULY	REVISIONS TO UNIT 2301, 2302, 2303, 2304, 2305, 2306, 2307, 2308, 2309, 2310, 2311, 2312, 2313, 2314, 2315, 2316, 2317, 2318, 2319, 2320, 2321, 2322, 2323
8	AUGUST	REVISIONS TO UNIT 2301, 2302, 2303, 2304, 2305, 2306, 2307, 2308, 2309, 2310, 2311, 2312, 2313, 2314, 2315, 2316, 2317, 2318, 2319, 2320, 2321, 2322, 2323
9	SEPTEMBER	REVISIONS TO UNIT 2301, 2302, 2303, 2304, 2305, 2306, 2307, 2308, 2309, 2310, 2311, 2312, 2313, 2314, 2315, 2316, 2317, 2318, 2319, 2320, 2321, 2322, 2323
10	OCTOBER	REVISIONS TO UNIT 2301, 2302, 2303, 2304, 2305, 2306, 2307, 2308, 2309, 2310, 2311, 2312, 2313, 2314, 2315, 2316, 2317, 2318, 2319, 2320, 2321, 2322, 2323
11	NOVEMBER	REVISIONS TO UNIT 2301, 2302, 2303, 2304, 2305, 2306, 2307, 2308, 2309, 2310, 2311, 2312, 2313, 2314, 2315, 2316, 2317, 2318, 2319, 2320, 2321, 2322, 2323
12	DECEMBER	REVISIONS TO UNIT 2301, 2302, 2303, 2304, 2305, 2306, 2307, 2308, 2309, 2310, 2311, 2312, 2313, 2314, 2315, 2316, 2317, 2318, 2319, 2320, 2321, 2322, 2323

NOTED BY: [Signature]  
 GSA [Signature] 10/01



Disclaimer: Floor plans depicted in this material are for demonstrational purposes only and should not be relied upon as final product plans.



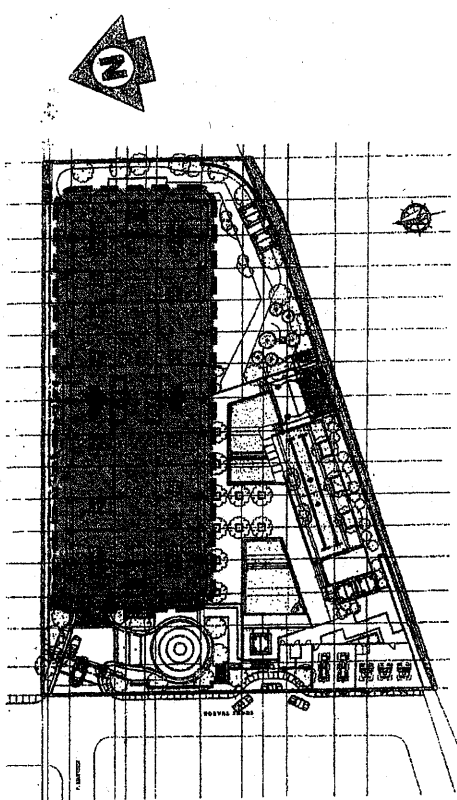
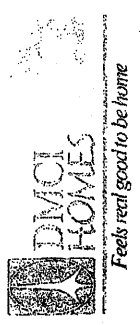
**LIST FOR POSSIBLE TANDEM UNITS:**

- 2402 & 2403
- 2414 & 2415
- 2502 & 2503
- 2514 & 2515

**NOTE:**  
Standard company policy regarding request for tandem shall apply.

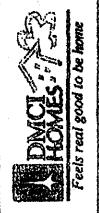
# VIERA RESIDENCES

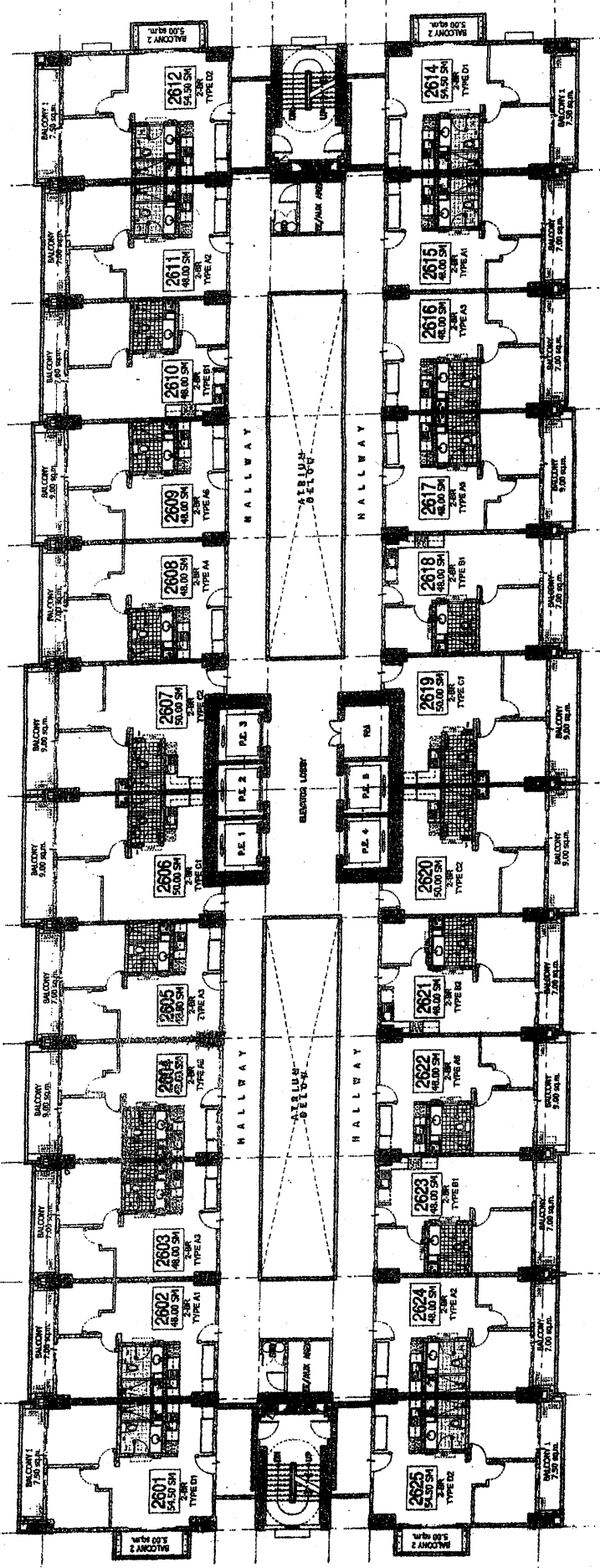
**24TH-25TH FLOOR PLAN**  
**SEPTEMBER 2014**  
 Memo Ref. # DESIGN-14-09-015



**KEYPLAN**

NOT DATE REVISIONS	PLANNED BY Del.L
1. APPROVED PROJECT SUPERVISOR	RAIS Subj. ment
2. CHECKED	GSA
3. CORRECTED	
4. APPROVED	
5. APPROVED	
6. APPROVED	
7. APPROVED	
8. APPROVED	
9. APPROVED	
10. APPROVED	
11. APPROVED	
12. APPROVED	
13. APPROVED	
14. APPROVED	
15. APPROVED	
16. APPROVED	
17. APPROVED	
18. APPROVED	
19. APPROVED	
20. APPROVED	
21. APPROVED	
22. APPROVED	
23. APPROVED	
24. APPROVED	
25. APPROVED	
26. APPROVED	
27. APPROVED	
28. APPROVED	
29. APPROVED	
30. APPROVED	
31. APPROVED	
32. APPROVED	
33. APPROVED	
34. APPROVED	
35. APPROVED	
36. APPROVED	
37. APPROVED	
38. APPROVED	
39. APPROVED	
40. APPROVED	
41. APPROVED	
42. APPROVED	
43. APPROVED	
44. APPROVED	
45. APPROVED	
46. APPROVED	
47. APPROVED	
48. APPROVED	
49. APPROVED	
50. APPROVED	
51. APPROVED	
52. APPROVED	
53. APPROVED	
54. APPROVED	
55. APPROVED	
56. APPROVED	
57. APPROVED	
58. APPROVED	
59. APPROVED	
60. APPROVED	
61. APPROVED	
62. APPROVED	
63. APPROVED	
64. APPROVED	
65. APPROVED	
66. APPROVED	
67. APPROVED	
68. APPROVED	
69. APPROVED	
70. APPROVED	
71. APPROVED	
72. APPROVED	
73. APPROVED	
74. APPROVED	
75. APPROVED	
76. APPROVED	
77. APPROVED	
78. APPROVED	
79. APPROVED	
80. APPROVED	
81. APPROVED	
82. APPROVED	
83. APPROVED	
84. APPROVED	
85. APPROVED	
86. APPROVED	
87. APPROVED	
88. APPROVED	
89. APPROVED	
90. APPROVED	
91. APPROVED	
92. APPROVED	
93. APPROVED	
94. APPROVED	
95. APPROVED	
96. APPROVED	
97. APPROVED	
98. APPROVED	
99. APPROVED	
100. APPROVED	





- LIST FOR POSSIBLE TANDEM UNITS:**
- 2602 & 2603
  - PH02 & P-403
  - 2615 & 2616
  - PH15 & PH16
  - 2702 & 2703
  - 2715 & 2716

**NOTE:**  
Standard company policy regarding requests for tandem shall apply.

2602&2603, 2615&2616, 2702&2603,  
2715&2716, PH02&PH03, PH15&PH16

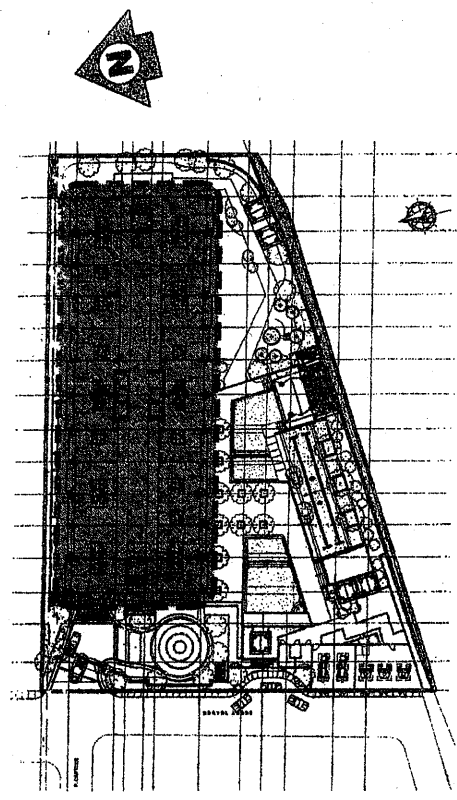
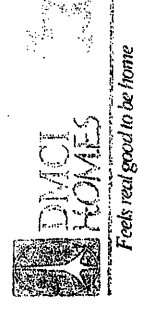
# VIERA RESIDENCES

26TH, 27TH, PENTHOUSE (28TH)

FLOOR PLAN

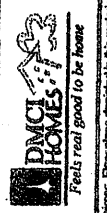
SEPTEMBER 2014

Memo Ref. # DESIGN-14-09-016



KEYPLAN

NOTED BY	DATE	REVISIONS
RMS/SL/10/2014	10/1/14	1. APPROXIMATE FLOOR PLAN
GSA	10/1/14	2. APPROXIMATE FLOOR PLAN
		3. APPROXIMATE FLOOR PLAN
		4. APPROXIMATE FLOOR PLAN
		5. APPROXIMATE FLOOR PLAN



Disclaimer: Floor plans developed by this firm are for informational purposes only and do not constitute an offer of real estate.